

TSX.V: SIG  
OTCQX: SITKF  
FRA: 1RF

# SITKA GOLD CORP

FOCUSED ON DISCOVERY  
TURNING VISION INTO VALUE

Q2 2026

# Forward Looking Statements

*This Presentation contains forward-looking statements that involve risks and uncertainties, which may cause actual results to differ materially from the statements made. When used in this document, the words "may", "would", "could", "will", "intend", "plan", "anticipate", "believe", "estimate", "expect" and similar expressions are intended to identify forward-looking statements. Such statements reflect our current views with respect to future events and are subject to such risks and uncertainties. Many factors could cause actual results to differ materially from the statements made, including those factors discussed in filings made by us with the Canadian or American securities regulatory authorities.*

*Should one or more of these risks and uncertainties, such as results of current exploration programs, the general risks associated with the mining industry, the price of gold and other metals, currency and interest rate fluctuations, increased competition and general economic and market factors, occur or should assumptions underlying the forward-looking statements prove incorrect, actual results may vary materially from those described herein as intended, planned, anticipated, or expected. We do not intend and do not assume any obligation to update these forward-looking statements. Potential shareholders are cautioned not to put undue reliance on such forward-looking statements.*



Photo: Sitka's RC Gold Camp April 15, 2026

## ★ RC GOLD PROJECT (FLAGSHIP), YUKON

- 3.83 million oz gold at 0.72 g/t inferred
- 1.29 million oz gold at 1.01 g/t indicated

## ★ ALPHA GOLD PROJECT, NEVADA

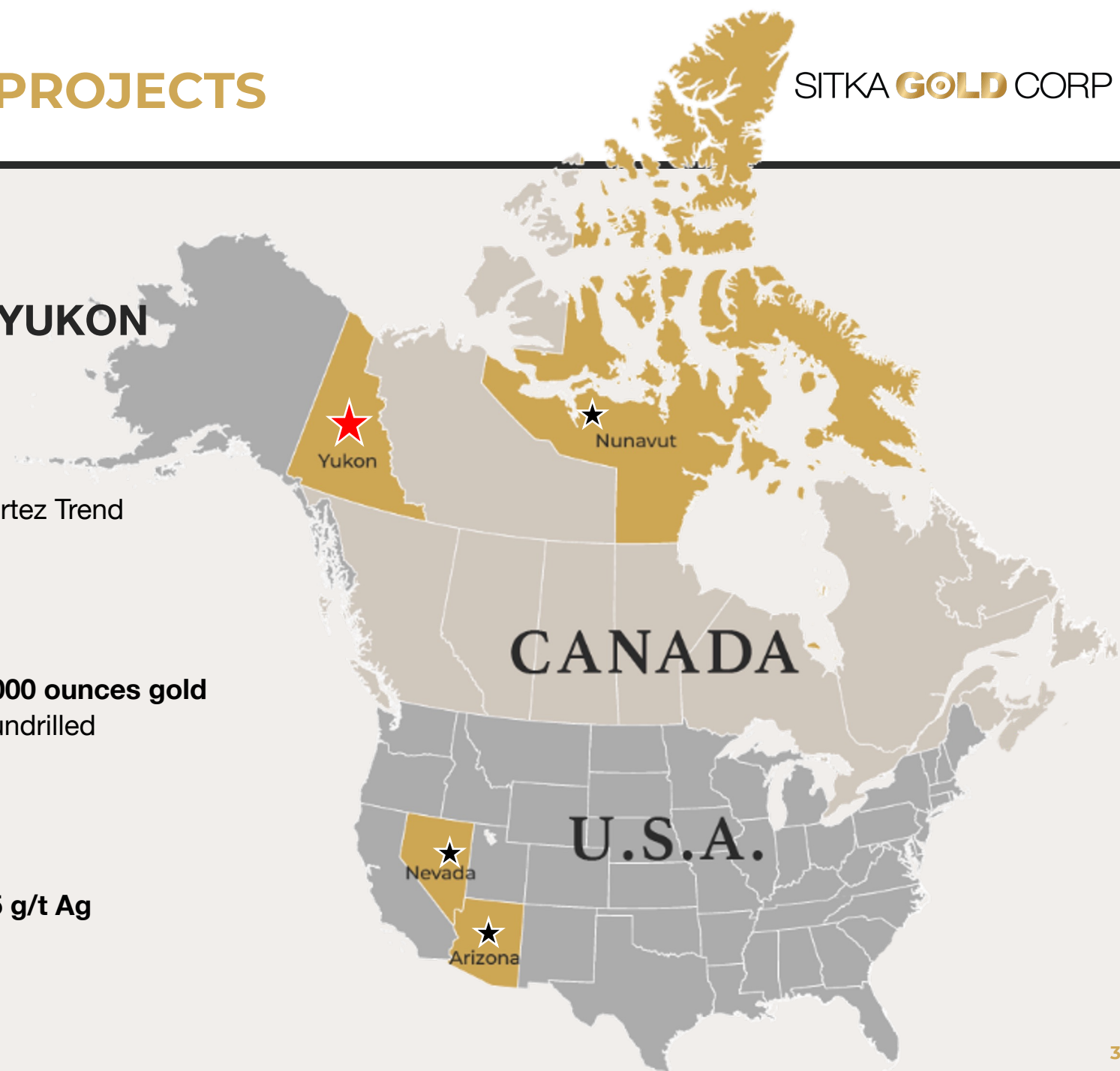
- NEW Carlin-type gold discovery along Nevada's Cortez Trend
- **21.0 m of 1.21 g/t gold** in drill hole AG22-10
- Permitted for drilling

## ★ BURRO CREEK PROJECT, ARIZONA

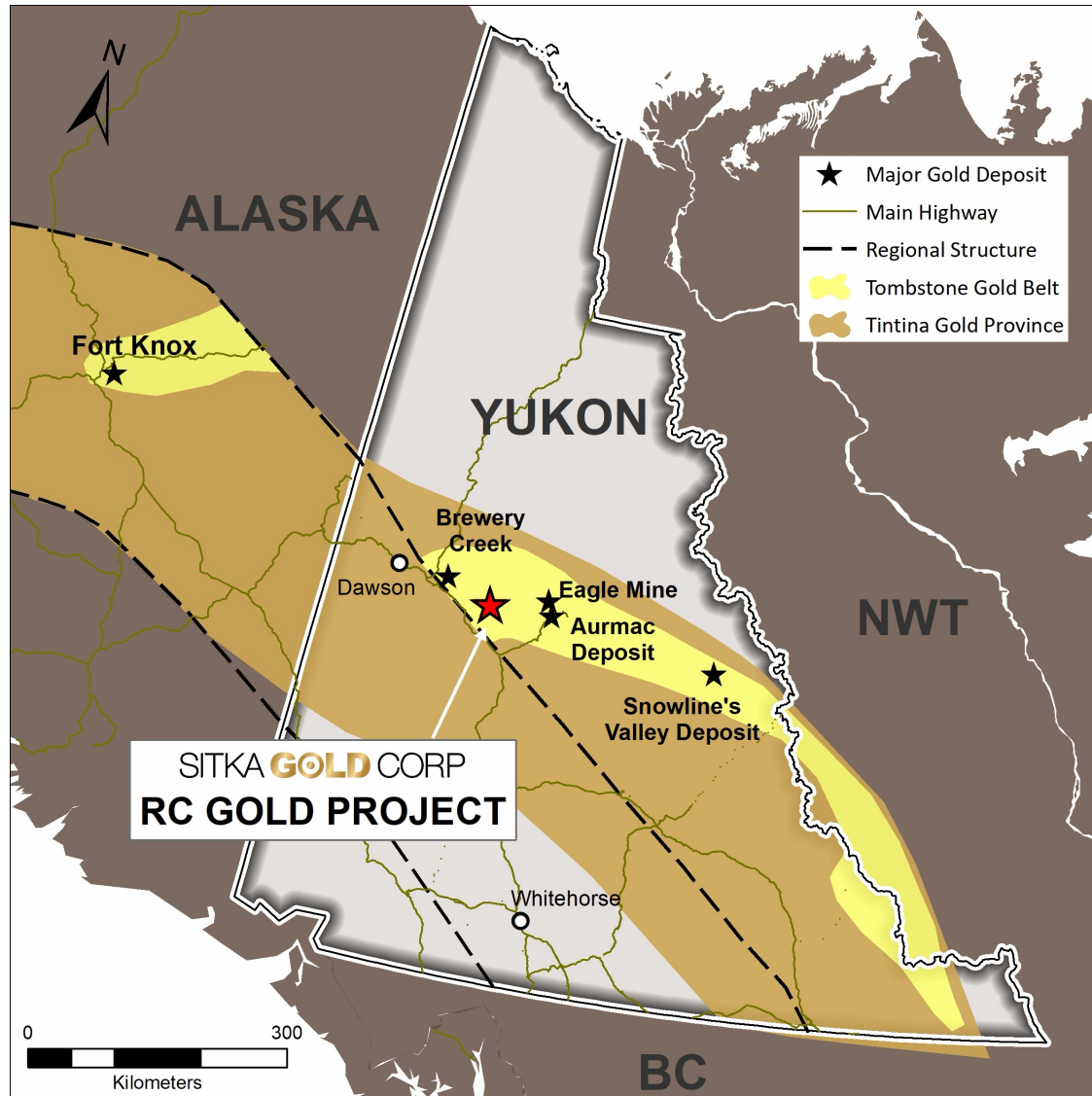
- Historical resource: **5 million ounces silver & 120,000 ounces gold**
- 1.5 km epithermal vein traced that is approx. 90% undrilled
- Permitted for drilling

## ★ COPPERMINE RIVER, NUNAVUT

- Volcanic-hosted surface samples up to **41.54% Cu**
- Sediment-hosted samples up to **13.45% Cu** and **65 g/t Ag**



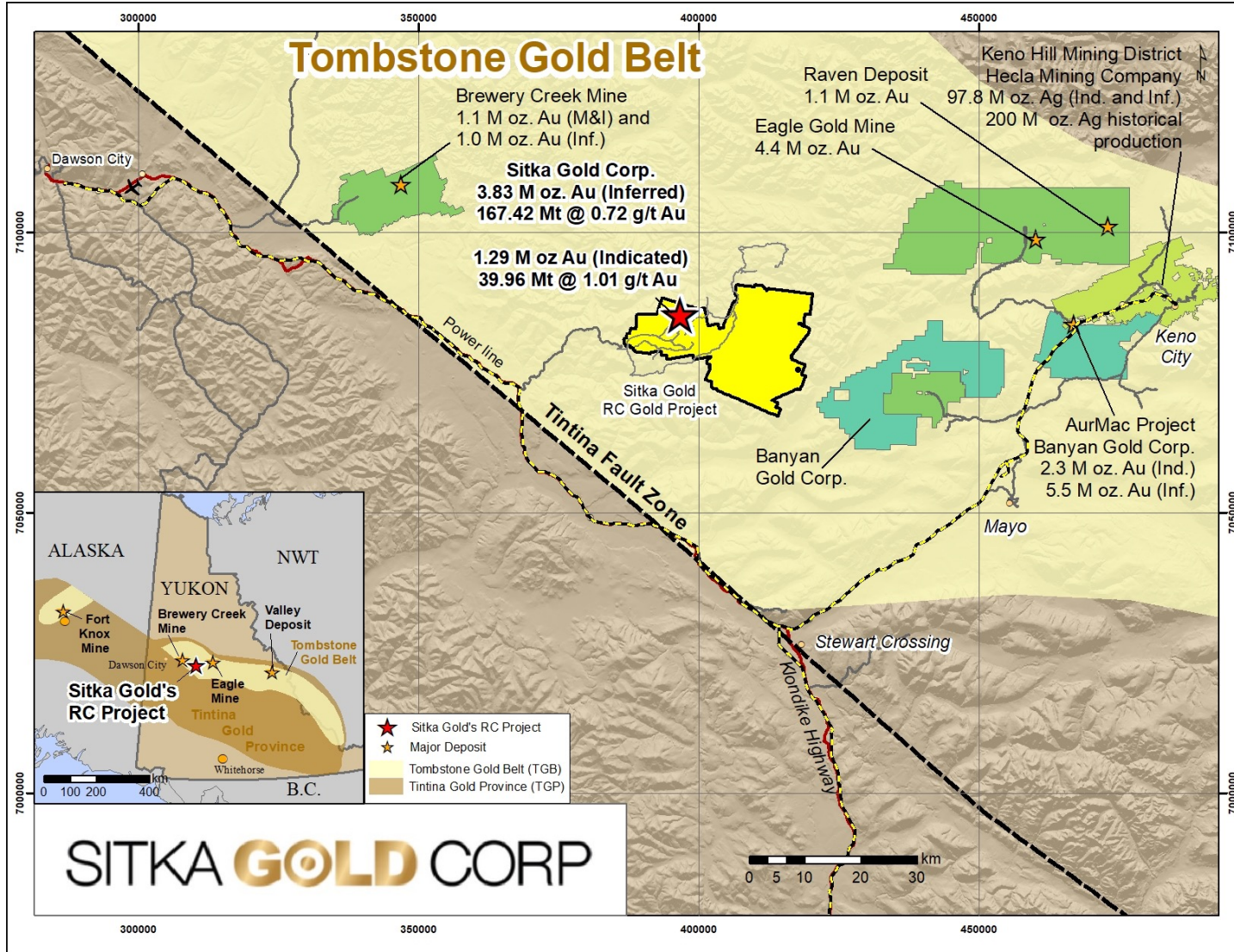
# ➤ RC GOLD PROJECT LOCATION - ROAD



**100 km south-east of Dawson City, Yukon, with road access via Clear Creek Road (Km 32) from the Klondike Highway and proximity to 5,000-foot paved runway at Dawson City Airport**

**The Tombstone Gold Belt is a prolific region within the Tintina Gold Belt, alongside major projects including the Eagle Gold Mine, Brewery Creek, Banyan Gold's AurMac, and Snowline Gold's Valley deposit**

**447 km<sup>2</sup> land package in a mining-friendly jurisdiction with proven discovery and development success**

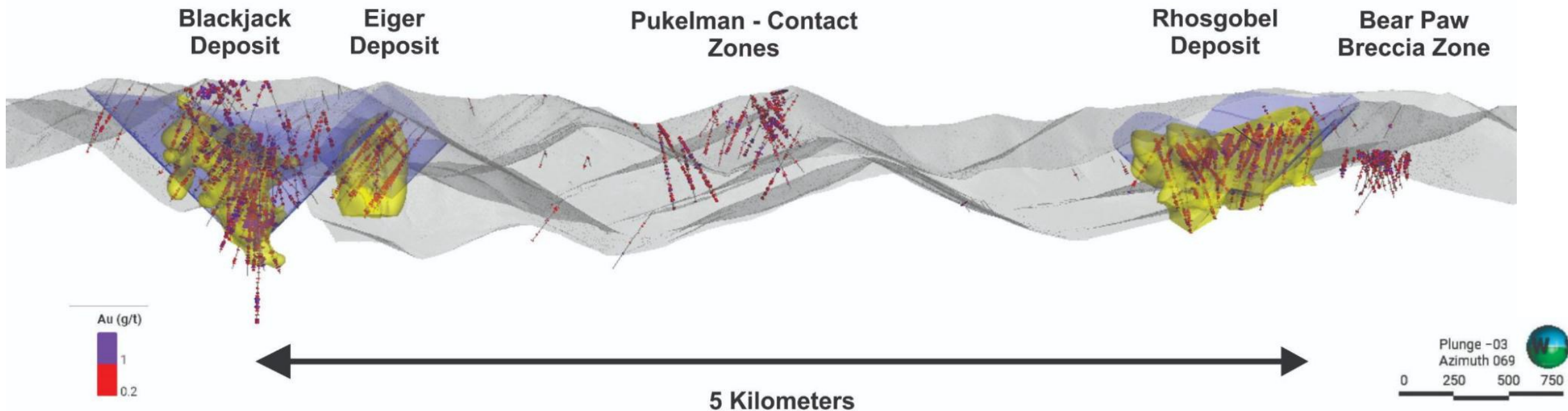


DAWSON - MAYO REGION OF  
THE TOMBSTONE GOLD BELT

Gold Endowment in this road-  
accessible area  
*has increased by*  
**14 million ounces**  
since May 2020  
*for a total of*  
**23 million ounces**

# CURRENT PIT-CONSTRAINED GOLD RESOURCES AT RC GOLD

➤ 1.29 million oz Au Indicated + 3.38 million oz Au Inferred



Zone	Class	Cut-off Grade (g/t Au)	Tonnes (000's)	Gold Grade (Au g/t)	Oz Au (000's)
<b>Blackjack *</b>	Indicated	0.3	39,962	1.01	<b>1,291</b>
<b>Blackjack *</b>	Inferred	0.3	34,603	0.94	1,044
<b>Rhosgobel**</b>	Inferred	0.3	100,677	0.7	2,250
<b>Eiger**</b>	Inferred	0.3	32,143	0.52	535
<b>Total Inferred</b>	Inferred	0.3	167,423	0.72	<b>3,829</b>

- Total resource is based on three zones: **Blackjack, Eiger and Rhosgobel**
- Resource updated February 25, 2026
- As of the resource update, **165 diamond drill holes** have been drilled into this system by the Company for a total of approximately **59,800 metres**
- *32,000 metre diamond drill program completed 2025*
- **60,000 metre diamond drill program currently underway**

\*Simpson R., Clear Creek Property, RC Gold Project NI 43-101 Technical Report, Dawson Mining District, YT. January 21, 2025

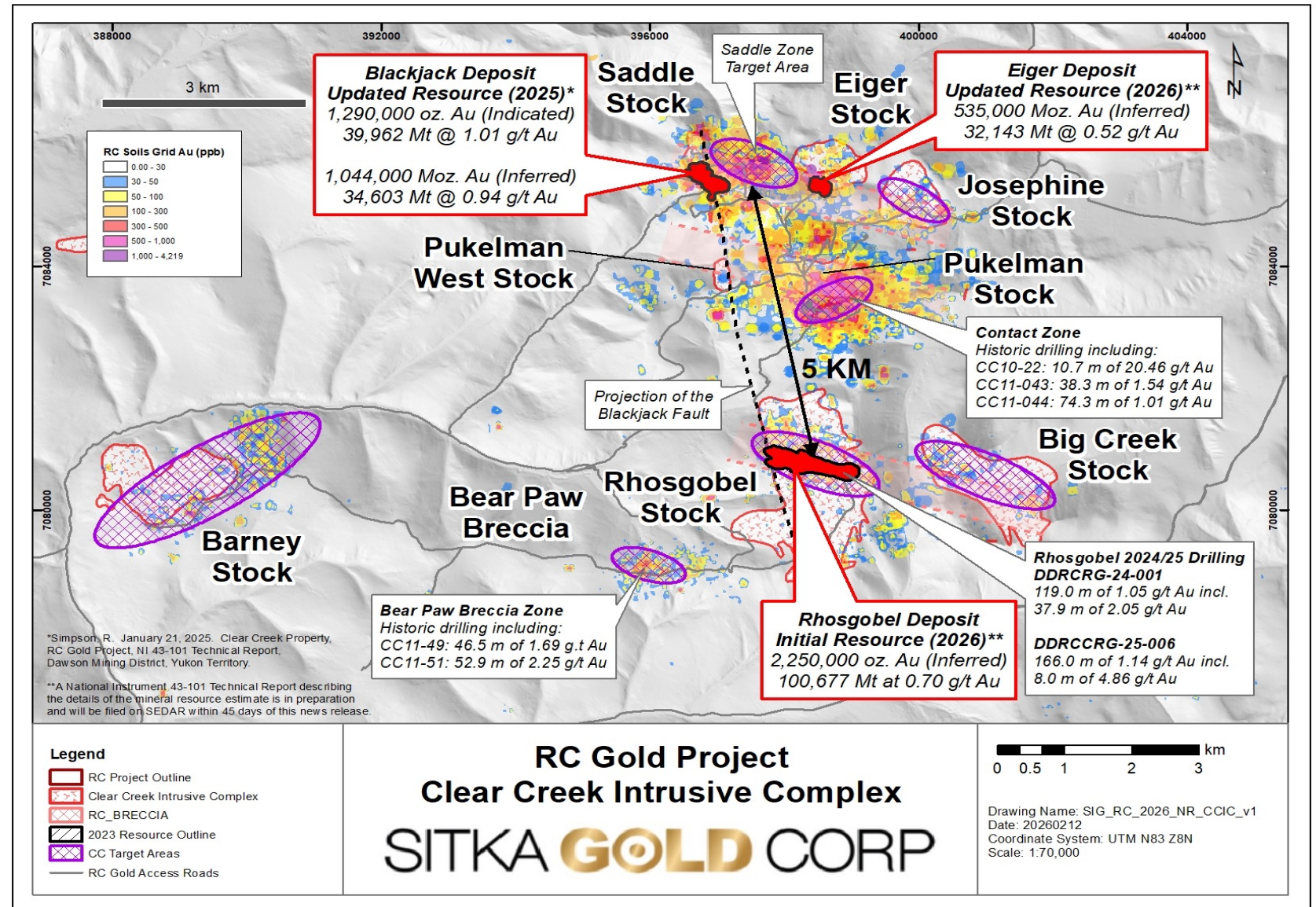
\*\* See Company News Release dated February 25, 2026

# RC GOLD PROJECT

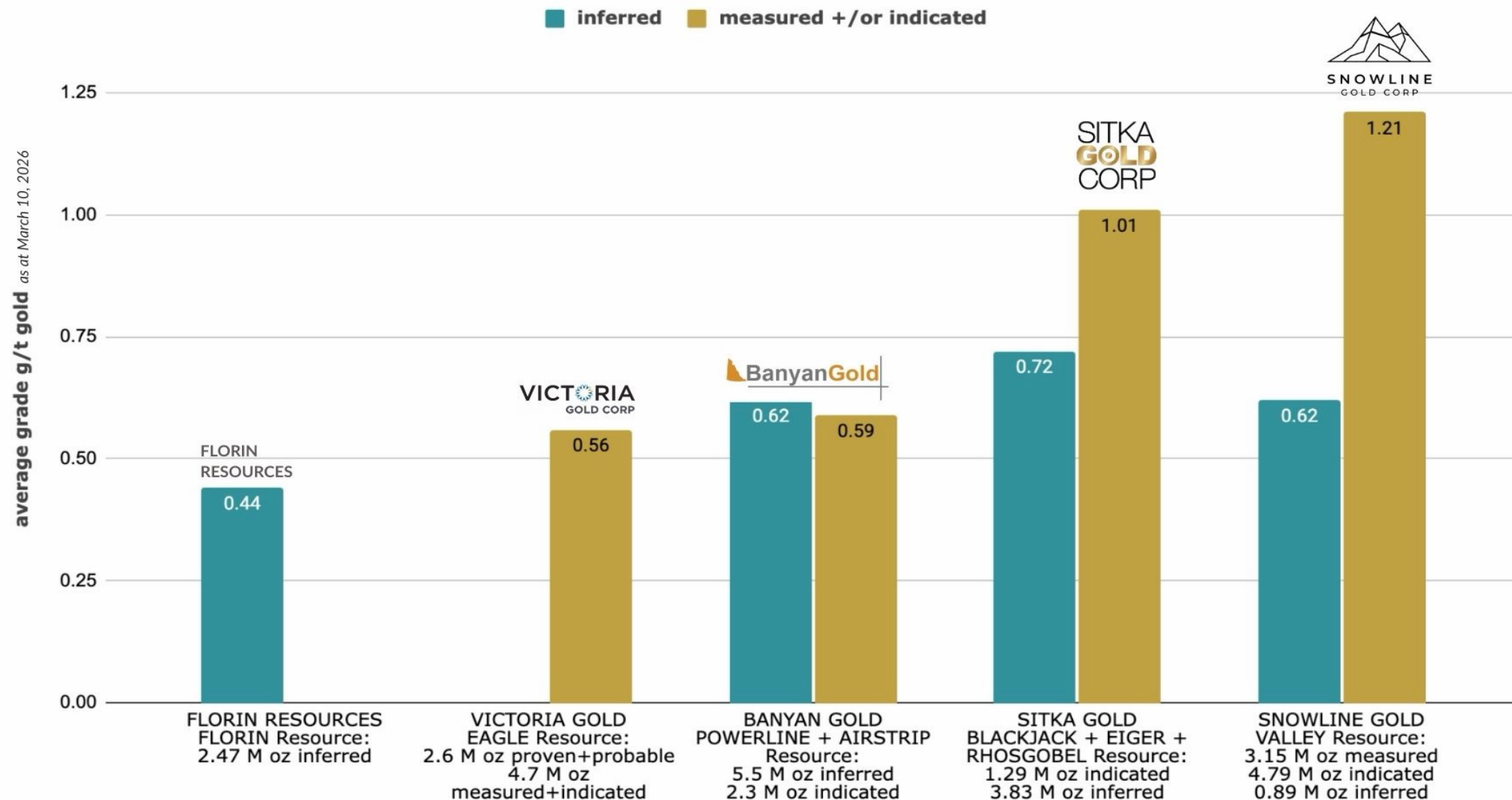
## 3 Gold Deposits - and Growing

### Drill ready targets

- Resource expansion at Blackjack, Eiger and Rhosgobel deposits, Saddle zone drilling to upgrade into resource
- Drilling at Contact and Bear Paw for potential maiden resources
- Additional Drill ready targets at Josephine, Contact, Big Creek and Barney
- Two additional Drill targets outside the CCIC at the May-Qu and Mahtin intrusions



# ➤ GRADE COMPARISON - Tombstone Gold Belt



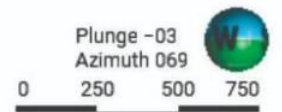
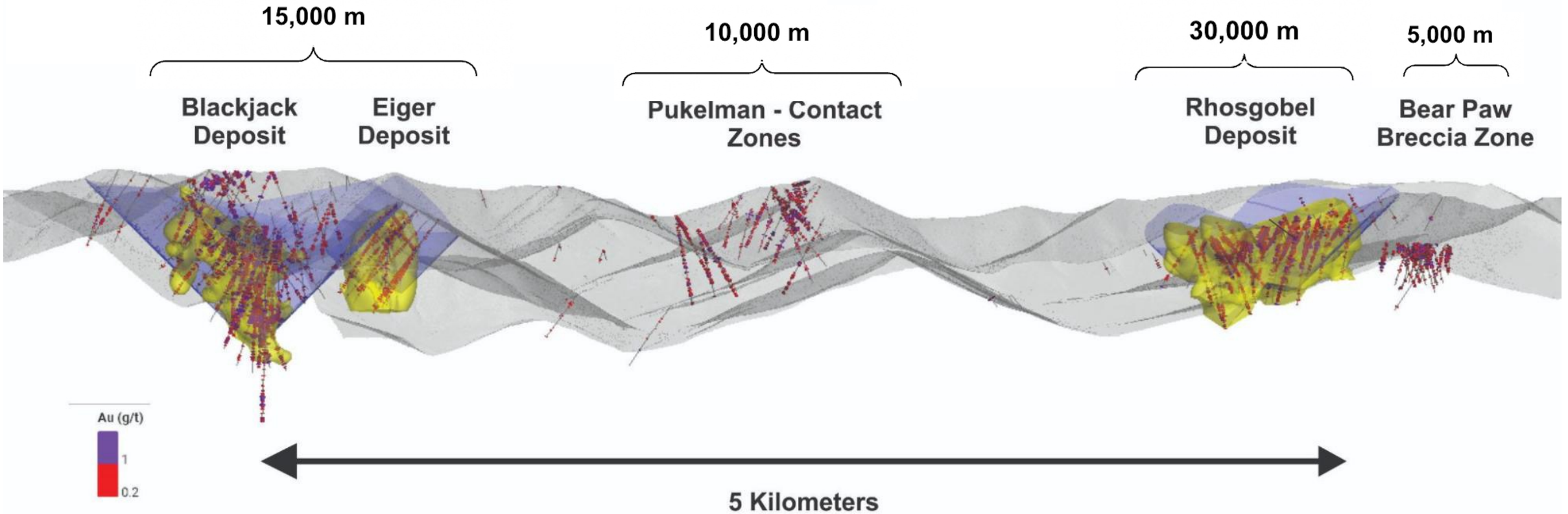


# RC GOLD PROJECT

## Planned 60,000 Meter Diamond Drill Program

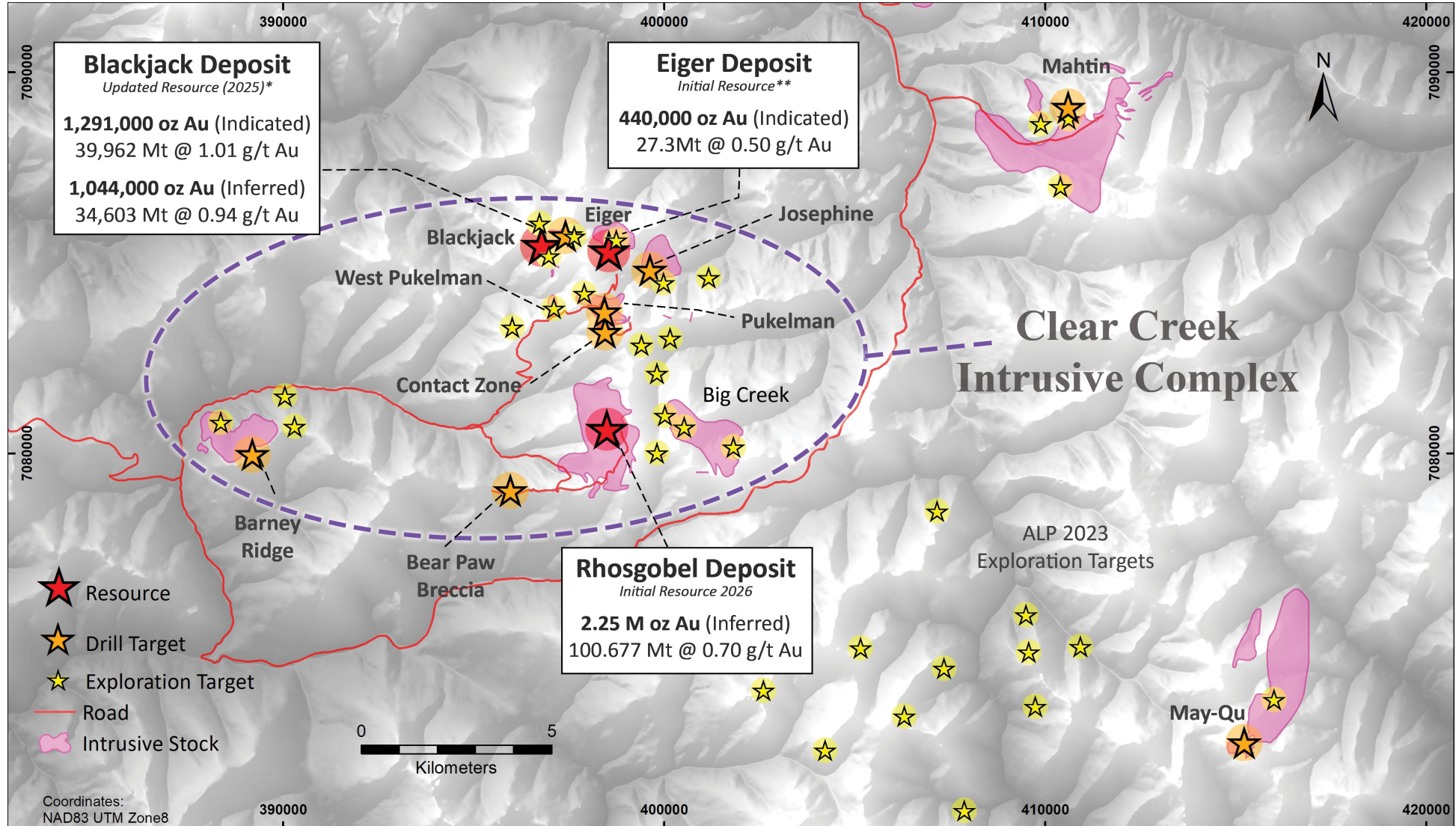
SITKA GOLD CORP

**RC GOLD PROJECT**  
Long Section Looking Northeast  
Blackjack to Rhosgobel



# RC GOLD PROJECT

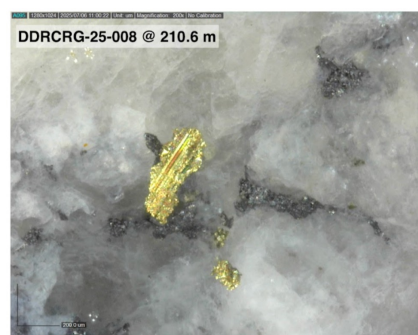
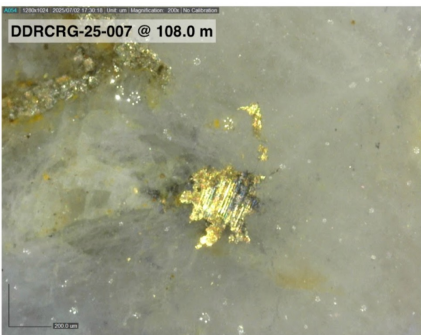
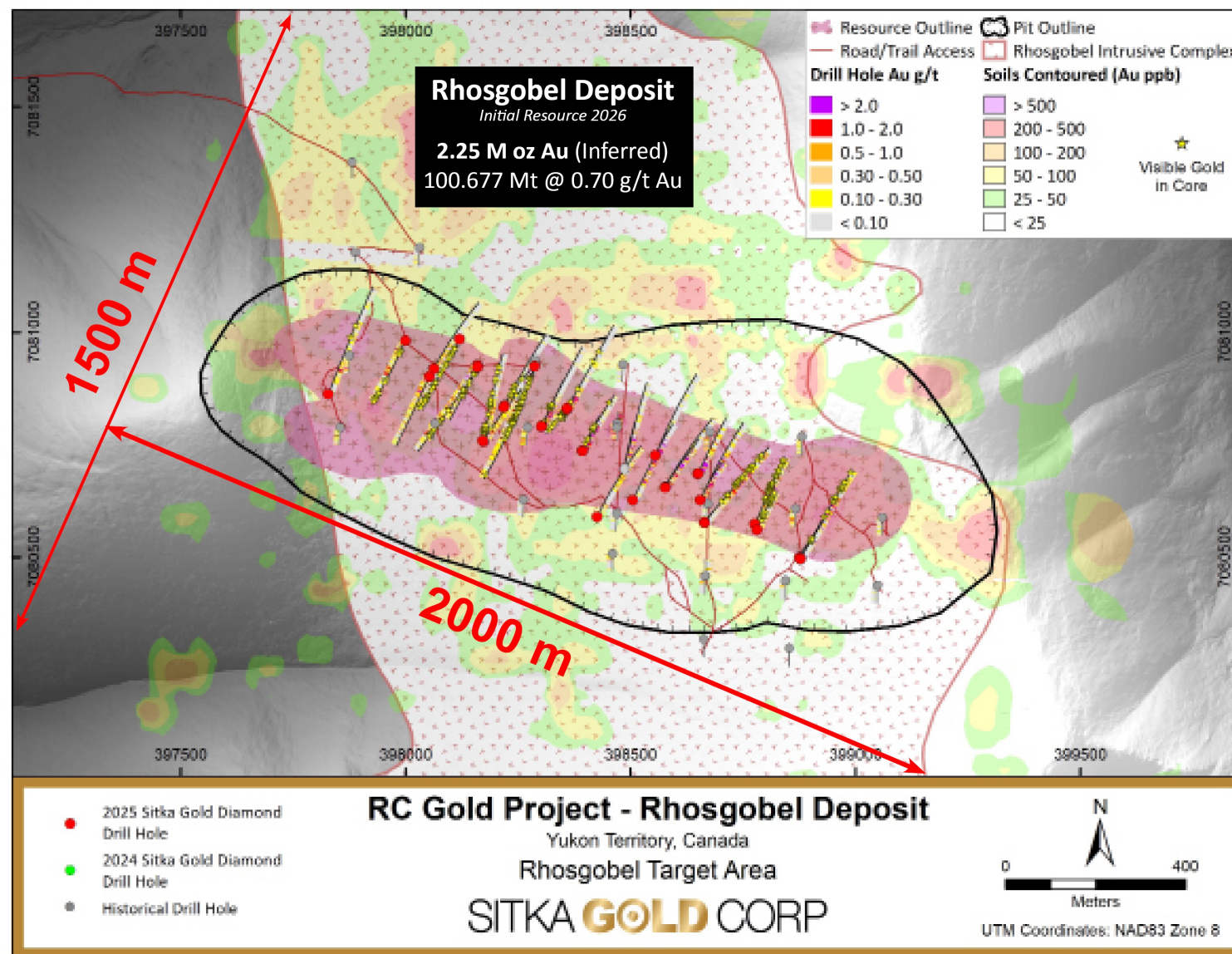
## Clear Creek Intrusive Complex



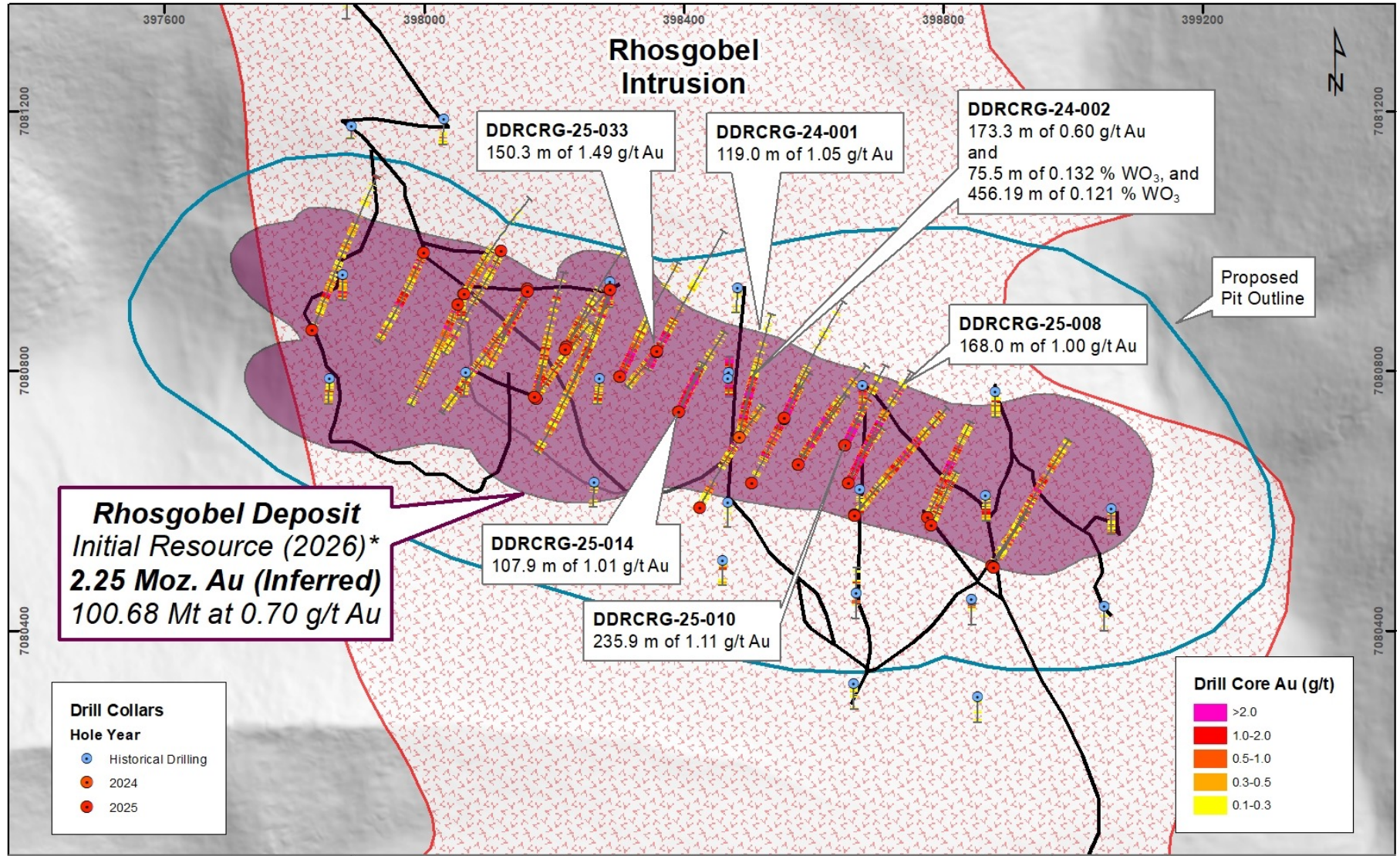
# ➤ RHOSGOBEL DEPOSIT: 2.25 million oz Au inferred

MAIDEN RESOURCE BASED ON 15,396 METRES OF DRILLING TOTALING 72 HOLES

- **MAIDEN RESOURCE:** 2.25 M oz @ 0.70 g/t Au  
Announced Feb. 2026 (0.3 cut-off)
- 30,000 Metres of drilling planned at Rhosgobel in 2026
- **2025:** Discovery hole 24-01 intersected 119.0 m of 1.05 g/t gold including 37.9 m of 2.05 g/t gold
- Hole 25-02 intersected 173.3m of 0.60 g/t Au and 0.095% WO<sub>3</sub> including 12.4m of 2.43 g/t Au and 0.21% WO<sub>3</sub>
- Hole 25-10 intersected 235.9 m of 1.11 g/t gold including 40.0 m of 2.01 g/t gold from surface
- Visible gold in 39 of the 43 holes drilled to date
- 1.1 kilometre strike length



**INITIAL MINERAL RESOURCE ESTIMATE OUTLINE WITH CONCEPTUAL PIT-SHELL AND EXAMPLES OF HIGHLIGHTED DRILL HOLE INTERCEPTS.**



➤ **RHOSGOBEL DEPOSIT** Inferred Mineral Resource Estimate  
 Showing the Sensitivity of the Resource Model to Changing Cut-off Grades

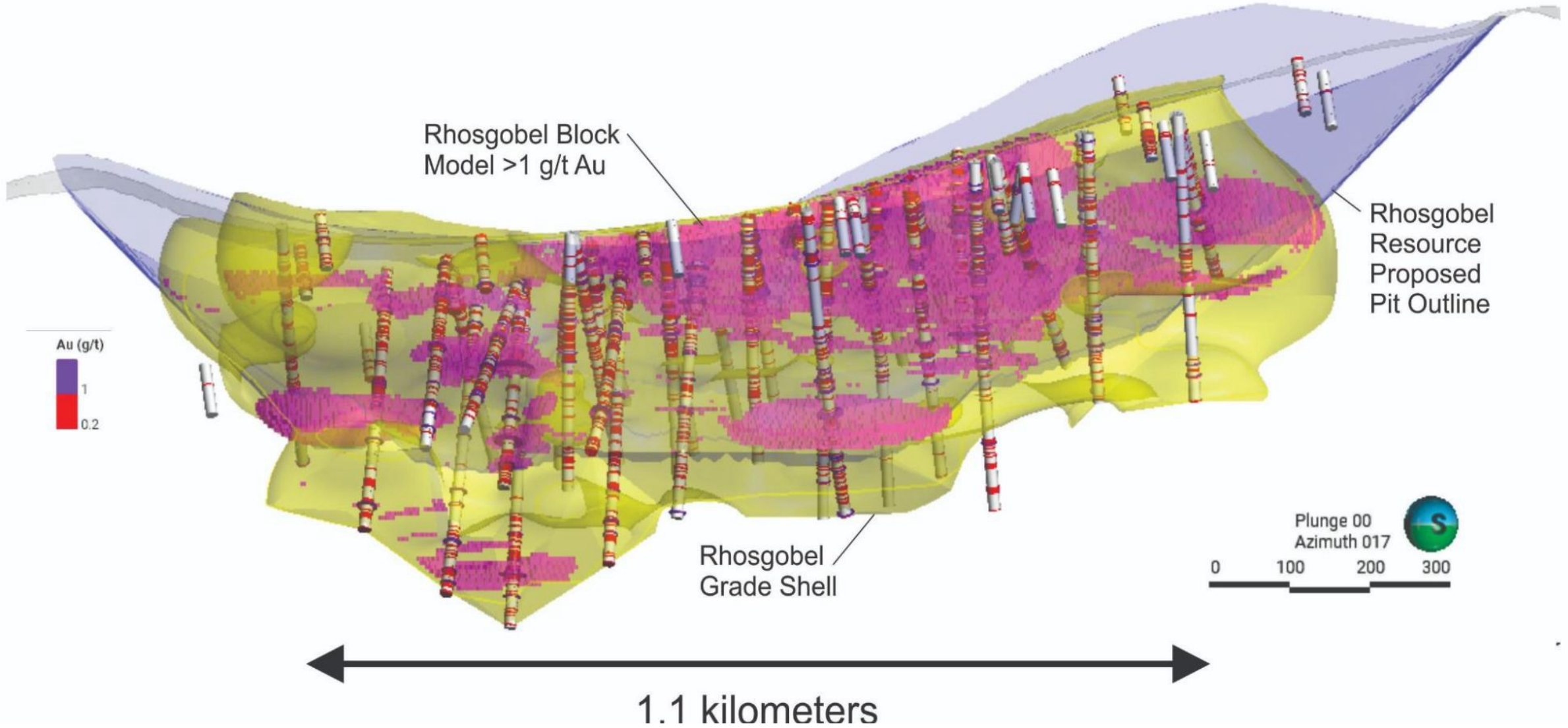
Cut-off Grade (g/t Au)	Tonnes (000's)	Au (g/t)	Oz Au (000's)
0.20	129,683	0.60	2,481
0.25	115,106	0.64	2,380
<b>0.30</b>	<b>100,677</b>	<b>0.70</b>	<b>2,250</b>
0.35	89,620	0.74	2,135
0.40	78,687	0.79	2,004
0.45	68,714	0.85	1,867
0.50	59,768	0.90	1,731
0.55	51,451	0.96	1,591
0.60	44,883	1.02	1,470

Notes:

1. Bolded row represents the base case for the mineral resource estimate.
2. Cut-off grades as low as 0.2 g/t Au are still considered to have Reasonable Prospects for Eventual Economic Extraction.

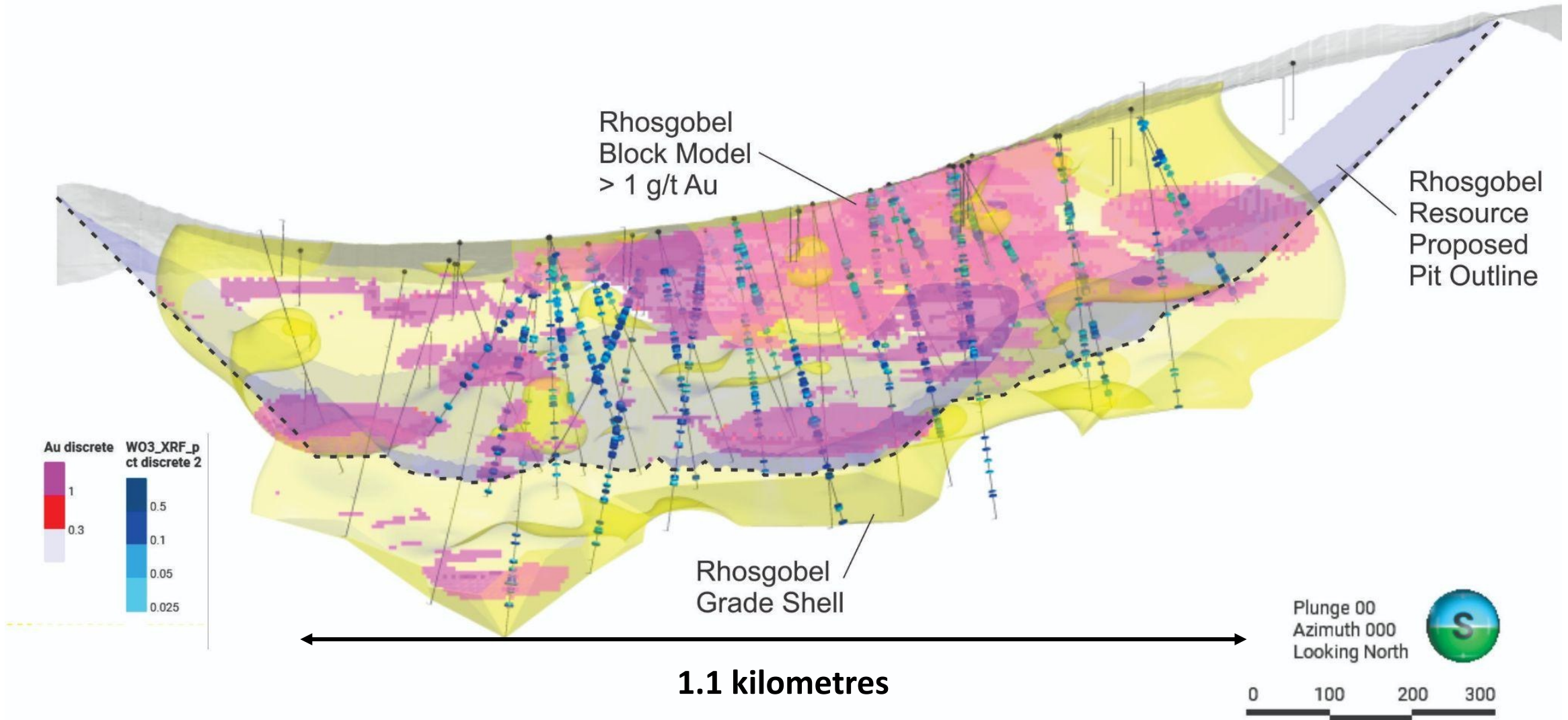
# ➤ RHOSGOBEL DEPOSIT

## Cross Section Looking North Showing >1 g/t Au Block Model



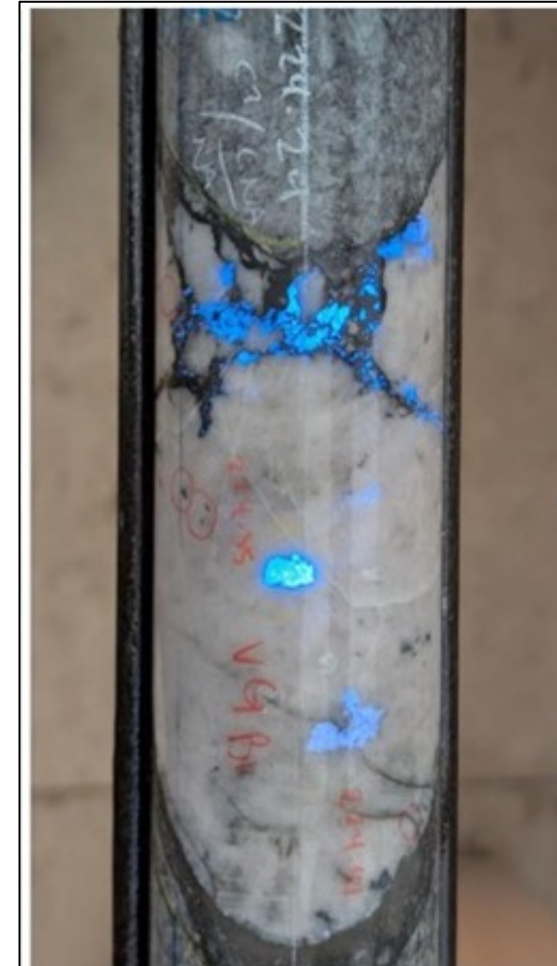
# RHOSGOBEL DEPOSIT

## Cross Section Looking North Showing >1 g/t Au Block Model with WO<sub>3</sub> in drill holes



# ➤ RHOSGABEL – POTENTIAL TUNGSTEN BY-PRODUCT DRILL HOLE HIGHLIGHTS

Hole ID	Zone	Length (m)	Azimuth (°)	Dip (°)	From (m)	To (m)*	Length (m)	WO3 (%)
DDRCRG-24-002	Rhosgobel	400.8	10	-75	119.5	195	75.5	0.132
DDRCRG-25-003	Rhosgobel	274.3	25	-50	56.4	155.1	98.7	0.111
DDRCRG-25-004	Rhosgobel	382.5	25	-70	98.0	179.4	81.4	0.136
and					202.0	262.1	60.1	0.136
DDRCRG-25-006	Rhosgobel	396.2	25	-80	3.1	131.0	128.0	0.115
DDRCRG-25-007	Rhosgobel	304.5	25	-50	55.6	157.0	101.4	0.124
DDRCRG-25-009	Rhosgobel	214.9	25	-50	5.4	80.9	75.4	0.142
DDRCRG-25-010	Rhosgobel	241.0	25	-80	61.0	174.2	113.2	0.116
DDRCRG-25-011	Rhosgobel	272.2	25	-60	130.0	214.0	84.0	0.119
DDRCRG-25-019	Rhosgobel	295.5	25	-60	89.8	166.5	76.6	0.128
DDRCRG-25-025	Rhosgobel	417.6	205	-65	193.0	263.7	70.7	0.149
DDRCRG-25-026	Rhosgobel	326.1	25	-50	174.0	232.0	58.0	0.109
DDRCRG-25-032	Rhosgobel	362.7	25	-65	174.0	224.0	50.0	0.222
DDRCRG-25-033	Rhosgobel	365.8	205	-80	15.8	168.0	152.3	0.109
and					298.0	302.0	4.0	0.560
DDRCRG-25-039	Rhosgobel	286.5	25	-60	152.5	280.1	127.6	0.100
DDRCRG-25-040	Rhosgobel	317.0	25	-45	173.0	236.0	63.0	0.108



**Hole 2 -Scheelite  
(Tungsten)**

# RHOSGOBEL – INITIAL METALLURGICAL TESTWORK

## ➤ HIGH GOLD AND TUNGSTEN RECOVERIES

SITKA **GOLD** CORP

### 2026 – Rhosgobel

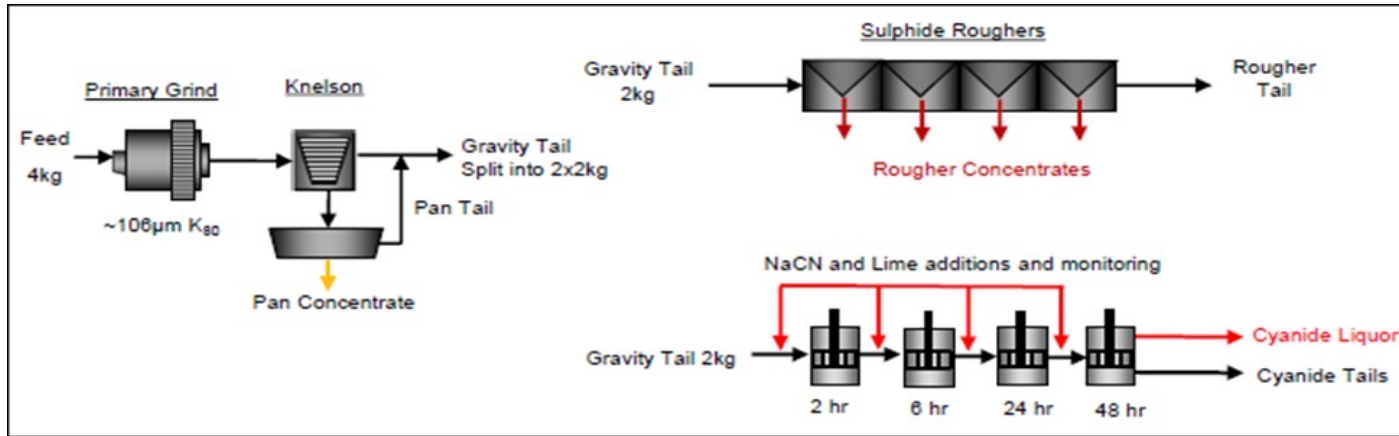
- Gold recovery averaging **94.3%** from Rhosgobel deposit utilizing conventional whole ore cyanidation leaching at a grind size of 75 microns;
- Results from initial metallurgical testing returned a **tungsten recovery of 84.7%** in rougher concentrate using conventional flotation with a very low mass pull of less than 1%;
- Initial metallurgy confirms high recoveries for both tungsten and gold and demonstrates that tungsten could be a valuable by-product of potential future production at Rhosgobel

### WO<sub>3</sub> (Tungsten Tri-Oxide)



**LAB PHOTO: SCHEELITE (WO<sub>3</sub>) FLOTATION CIRCUIT ONGOING METALLURGICAL OBSERVATIONS**

# ➤ METALLURGY – WHAT HAS BEEN DONE



Gilles Dessureau, VP Exploration

Cor Coe, Director & CEO

## 2022 – Blackjack + Eiger Deposits

- Cyanidation Bottle Roll Testing
- up to 94.1% Recovery**
- Confirmed **non-refractory** characteristics

## 2025 – Blackjack Deposit

- Conventional Cyanidation Leach
- Gravity Recovery + Gravity Tails Leach
- Gravity Recovery + Gravity Tails Floatation
- up to 93.0% Recovery**

## 2026 – Rhosgobel

- 94.3% gold recovery** on whole ore cyanidation leaching @75 microns
- 84.7% tungsten recovery** in rougher concentrate
- Blackjack + Eiger + Rhosgobel**
- Additional cyanidation leach, gravity and tails leach, gravity and gravity tails floatation and Tungsten recovery test work

# ➤ RC GOLD PROJECT – Blackjack-Saddle-Eiger

## 2025 BLACKJACK EXPANSION

- 15 drill holes totaling 7,576 m
- Visible gold observed in all holes

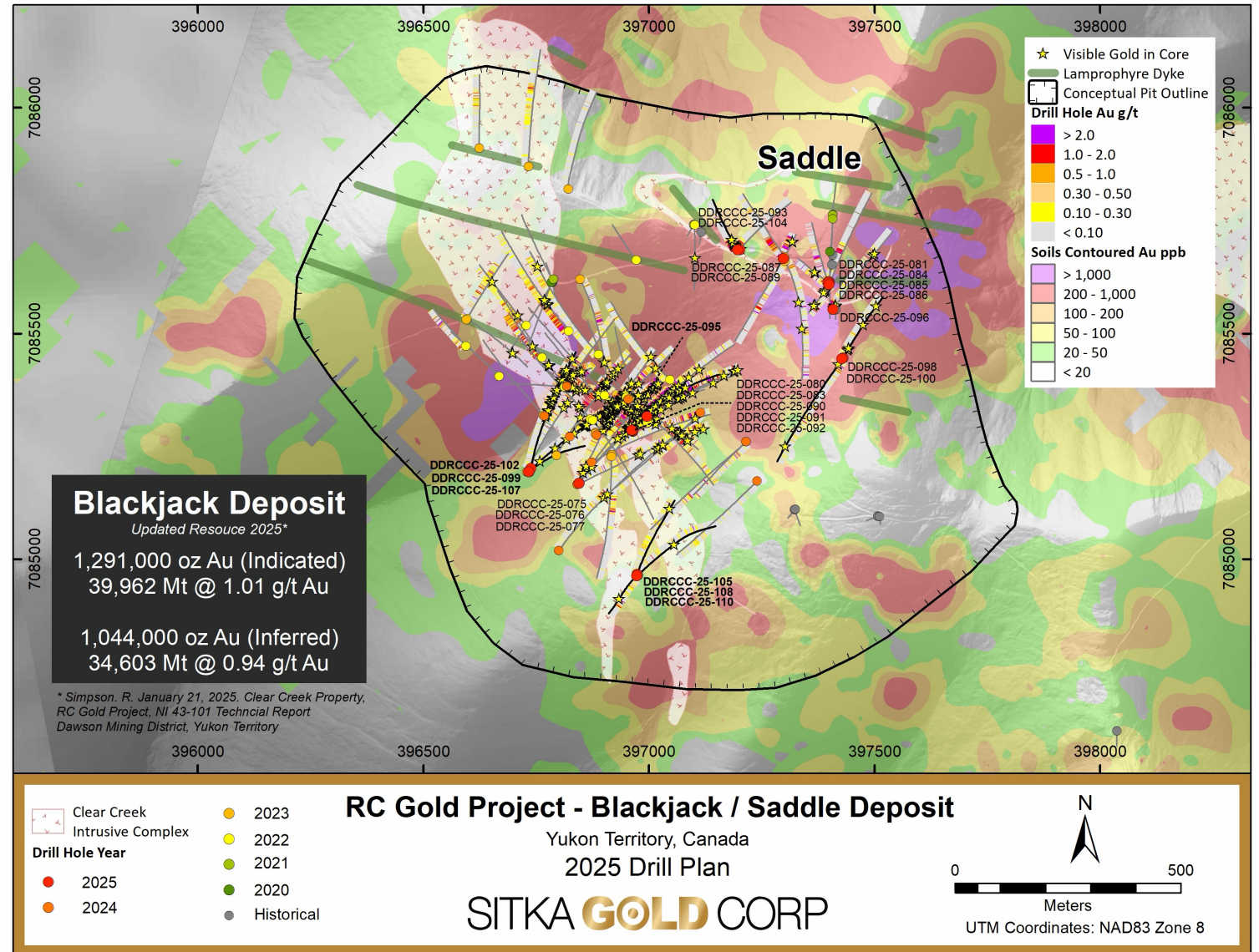
## EIGER EXPANSION

- 10 drill holes, totaling 4,461 m
- First drilling since 2021
- Visible gold observed in both intrusive and metasedimentary rocks

## SADDLE ZONE

- 11 drill holes totaling 2,918 m
- Within pit limits of Blackjack deposit
- Visible gold observed in both intrusive and metasedimentary rocks
- **47.6 m of 2.09 g/t Au including 8.0 m of 5.07 g/t Au in Hole 87**

**15,000 METERS PLANNED IN 2026**

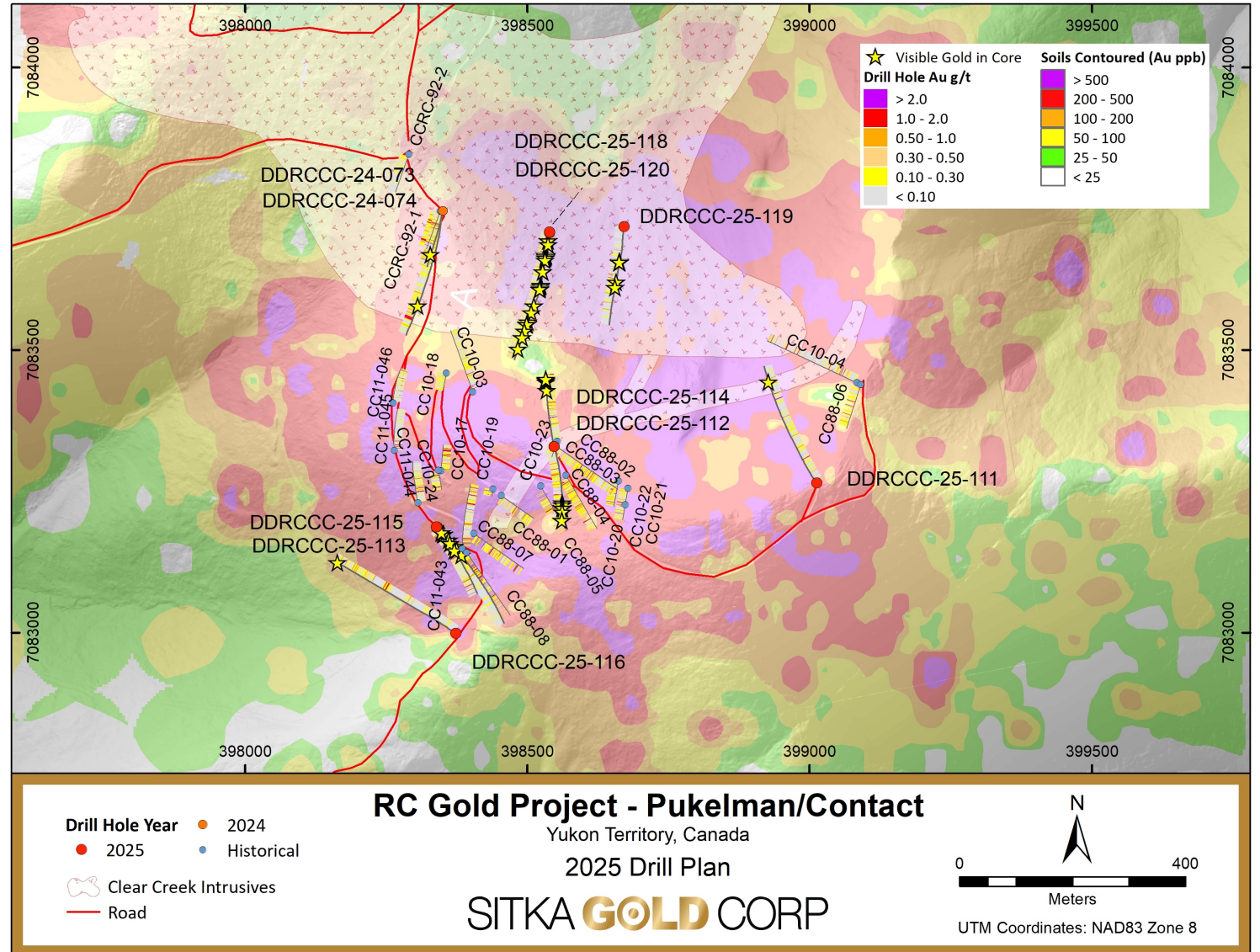
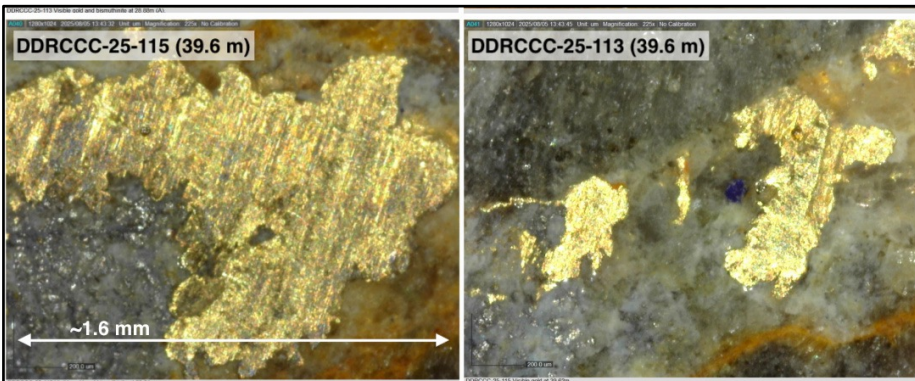


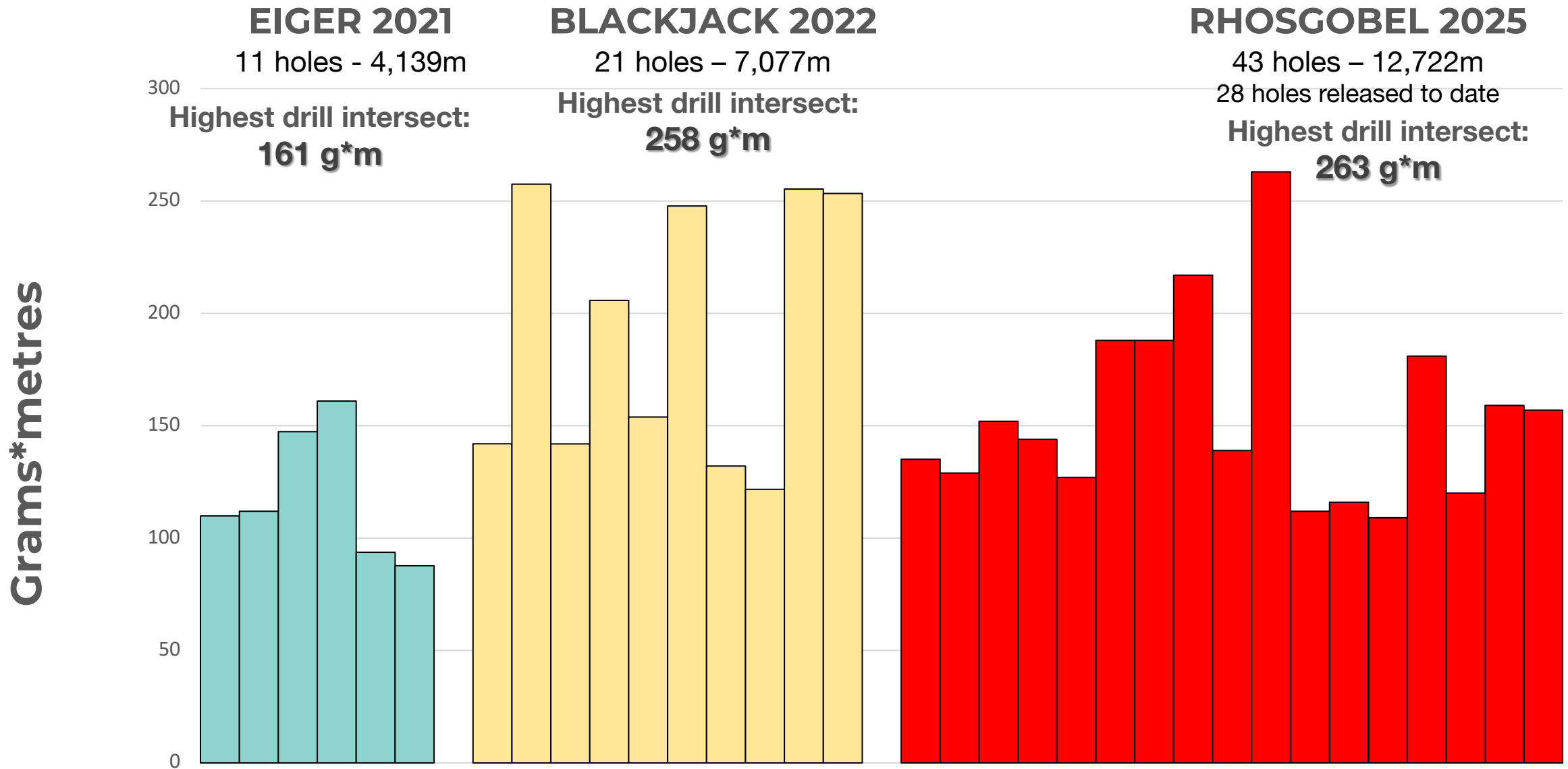
# ➤ 2025 DRILLING – CONTACT-PUKELMAN ZONE – 5,000 Metres

## DRILLING ON NEW DISCOVERIES



### 2025 DIAMOND DRILLING PUKELMAN-CONTACT DISCOVERY

- Sitka's 2024 drill hole DDRCCC-24-074 in the intrusion intersected 343.0 m of 0.34 g/t Au, yielding 117 g-m gold
- Sitka tested both intrusion and sediment hosted mineralization with diamond drilling in 2025
- 2025 drilling Hole 113 intersects **119.0 m of 1.01 g/t gold from surface**
- Drilling intersected gold mineralization over a 900 m by 650 m area and to a depth of 430 m





# ➤ DE-RISKING THE RC GOLD PROJECT

	2025	2026	2027		2028	2029	2030	2031
<b>Deposit(s) definition Exploration</b>	Rhosgobel Discovery	Ongoing 						
<b>Environmental Studies</b>	Baseline	Expanded Baseline	Expanded Baseline	Expanded Baseline	Expanded Baseline	Expanded Baseline		
<b>Engineering</b>			*PEA	*PFS	*PFS	*PFS/FS	*FS	*FS
<b>Assessment, Permitting and Licensing</b>					**YESAB	**YESAB	**YESAB	Water and Quartz Mining Licenses
<b>Indigenous Participation</b>	First Nations Participation and Engagement 							

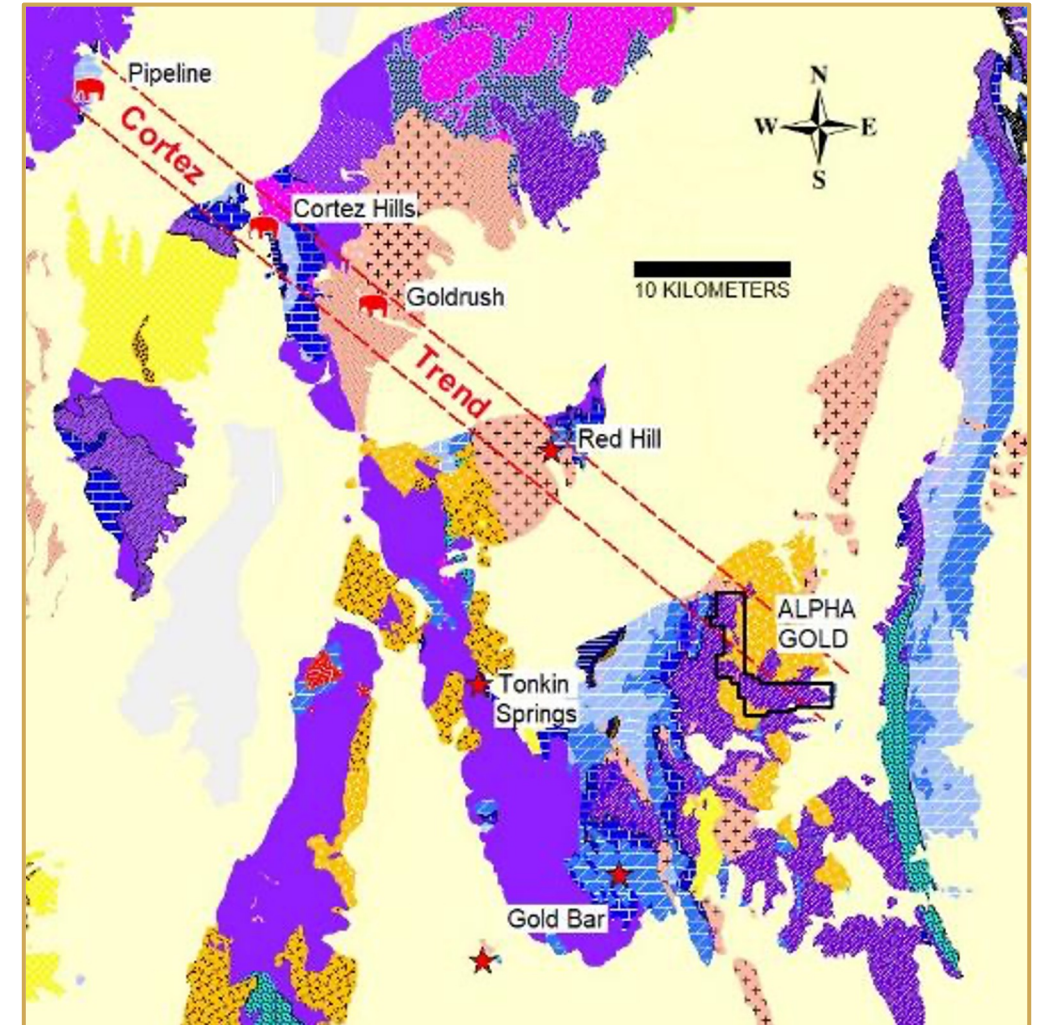
\*Preliminary Economic Assessment, Pre-Feasibility Study, Feasibility Study

\*\* Yukon Environmental and Socio-Economic Assessment Board



## ➤ LOCATION

- In the Carlin Gold Province with approx. 200 million ounces of gold discovered to date & 30 producing gold mines
- 40 Km southeast of the Barrick/Newmont Cortez Mine Complex
- An ideal erosional level preserves prime Late Devonian carbonates at the crest of a structural dome, at mineable depths



## A newly discovered large wide-open Carlin-type gold system with notable gold intercepts, from wide-spaced drilling

- 2020 to 2023 - Five drill programs totaling 5,144 metres in 15-holes have advanced the project from a geological model to a new discovery
- Road accessible property located in the Cortez Gold Trend, 40 km south-east of the Barrick/Newmont Cortez Mine
- Carlin style mineralization and alteration intersected in drilling, highlights include:

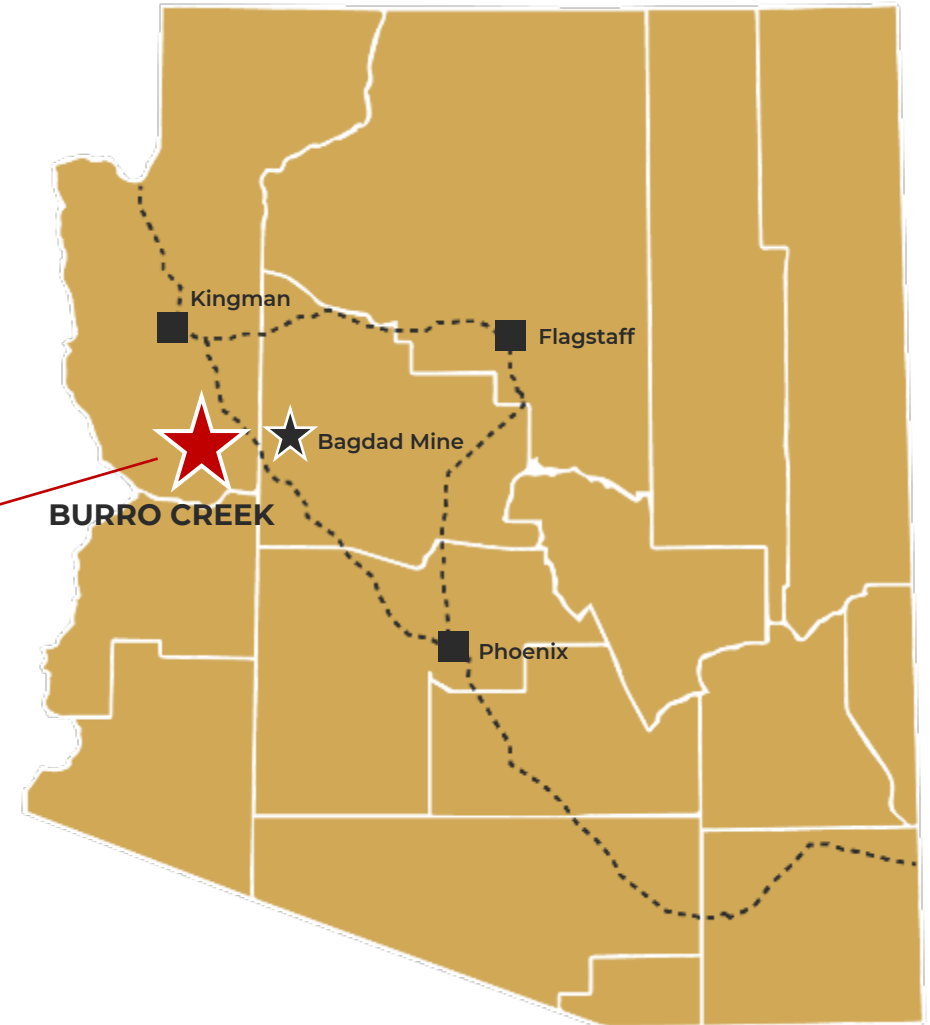
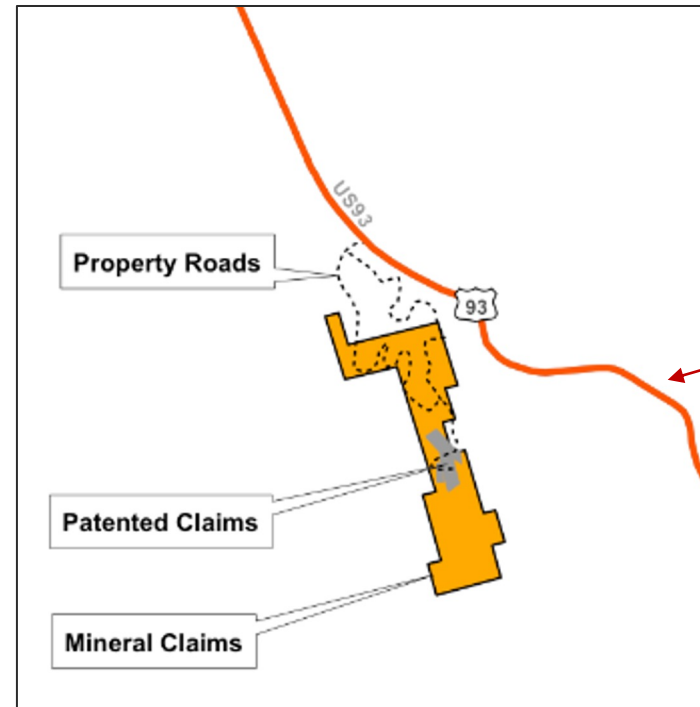
Hole #	From (metres)	Length (metres)	Gold (g/t)
AG21-05	118.8	12.2	0.41
AG21-07	62.5	103.6	0.12
including	196.6	3.05	0.41
AG21-08	333.8	15.24	0.46
including	344.4	3.05	1.10
AG22-09	125.0	10.7	0.51
AG22-10	211.8	<b>21.3</b>	<b>1.21</b>
Including	225.6	<b>1.5</b>	<b>4.62</b>



# ➤ BURRO CREEK (ARIZONA) Historical Silver Resource 5 Million Ounces

## ➤ LOCATION

- Located in Mohave County, Arizona approx. 200 km northwest of Phoenix, Arizona
- A very stable jurisdiction with a long history of mining success
- Road accessible; just 1 mile off Hwy 93



## HISTORICAL RESOURCE OF:

- 5 million ounces silver
- 120,000 ounces gold

- A massive, at surface, low sulphidation, epithermal Au-Ag vein system with a projected strike length of ~1.5 km
- Only 10% of interpreted vein system drilled
- Potential to significantly expand deposit
- Previously permitted for production
- In a proven mining jurisdiction with road access and nearby mining infrastructure
- **Phase 1 drilling completed Q2 2020**
- **Permitted for phase 2 drilling**

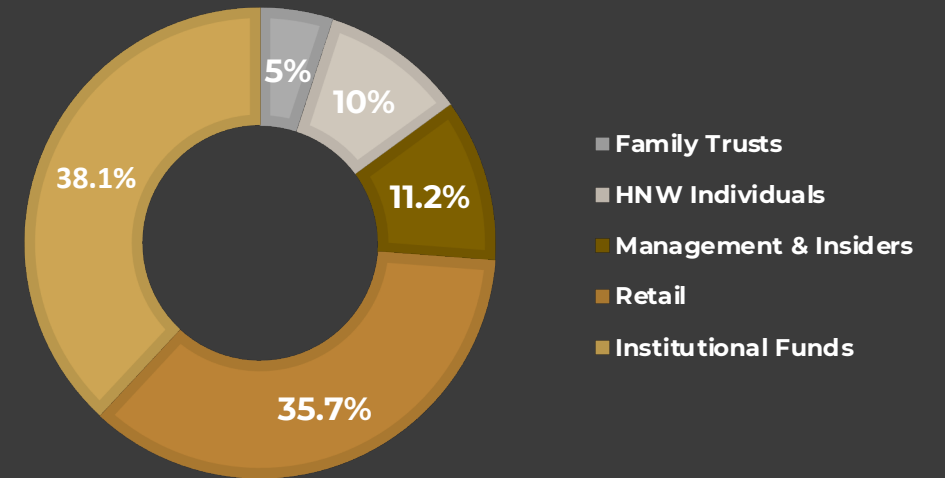


## 1 YEAR CHART

TSX-V: SIG | OTCQX: SITKF | FRA: 1RF as at May 4th 2026



## SHARE OWNERSHIP



## INSTITUTIONS



## ANALYST COVERAGE



## SHARE STRUCTURE

as at May 4th, 2026

Shares Outstanding	423,329,680
Warrants (avg. wt. \$0.36)	21,200,000
Options	18,150,000
Fully Diluted	462,679,680
Market Cap at \$0.99/share	~\$419 million

## MANAGEMENT & BOARD OF DIRECTORS

### **Corwin (Cor) Coe, B.Sc., P.Geo. – Director & CEO**

35+ years experience in the mining sector primarily in Arizona, Nevada and Yukon; has put 2 mines into production & is credited with discovery of a 2.0 M oz gold deposit; Professional Geologist and Mining Engineering Technologist with a B.Sc. in Earth Sciences from SFU; diploma in Mining Engineering Technology from BCIT. Raised more than \$100 Million for Sitka Gold to date.

**Donald Penner, B.Sc. – Director & President** President of DF Penner Geological Consulting Ltd., worked on grassroots to feasibility projects in North and South America, Africa and Europe since 1969; B.Sc. In Geological Sciences from University of British Columbia.

**Mike Burke, B.Sc., P.Geo. – Director & VP of Corporate Development** 35+ years experience in the mining sector primarily in the Yukon. Professional Geologist with a B.Sc. in Geology from UBC. Experience includes underground and open pit mine geologist, 20+ years with the Yukon Geological Survey as Head of Mineral Services, Chief Geologist for Golden Predator, Senior Operations Manager for Ensero Solutions.

**Scott Price, B.Sc., M.Sc. – Operations Manager (USA)** 25 years of experience with a focus on gold exploration in Nevada; worked on several discoveries throughout Nevada and on the Pebble deposit in Alaska; B.Sc. in geology from University of Wyoming; M.Sc. in geology from Washington State University.

**Stephen Pearce, LL.B. – Director & CFO** Director and Officer of several resource-related companies; specializes in corporate finance and securities; Law degree from UBC; Honours degree in economics from York University.

**Gilles Dessureau, P.Geo. – VP Exploration** Professional Geologist with 20+ years in the mining sector. 10+ years spent in the Yukon including Fireweed's Mac Pass and Golden Predator's Brewery Creek. Mr. Dessureau holds a Masters in Geology from Laurentian University.

## INDEPENDENT DIRECTORS

**Louis Archambeault, M.Eng - Independent Director** Senior mining executive with 20 + years spanning corporate development, strategy, capital markets, M&A and technical project development. Past experience includes 6+ years at CIBC World Markets, Director of Corporate Development at Goldcorp and VP of Strategy and Corporate Development at Orezone Gold Corp.

### **Angus Campbell, B.Sc. - Independent Director**

30 years of global project experience including working on greenfield, brownfield and mine development projects. Most recently, VP Ex for Sabina Gold and Silver Corp acquired by B2Gold Corp. in 2023 for \$1.2 billion. 10 years with Sabina, Angus led exploration initiatives that resulted in new deposit discovery and over 2.5 million ounces of resource growth. Prior to Sabina, he was Exploration Manager for Chile with BHP Billiton based in Santiago.

### **Caroline Hendrick - Independent Director**

Caroline Hendrick, JD, is a corporate and securities lawyer at DuMoulin Black, advising public and private companies on capital markets transactions, including financings, mergers and acquisitions, and regulatory compliance. Dual-qualified in British Columbia and New York, she brings a strong background in capital markets and supports Sitka's governance and capital markets capabilities.

## ADVISORY BOARD

### **Dr. Craig Hart, PhD, FSEG, FGAC – Independent Chair, Snowline Gold**

An internationally recognized geoscientist who played a pivotal role in the development of intrusion-related gold systems, such as those that form gold at Sitka's RC Gold Project. A founding geologist of the Yukon Geological Survey and former head of its Mineral Services Division. Dr. Hart holds a PhD from the University of Western Australia and has contributed to the publication of >150 scientific papers.

### **Tim Termuende, B.Sc, P.Geo**

Tim, President, executive chairman and Co-founder of Eagle Plains Resources, is a professional geologist with over 40 years' experience in the mineral exploration industry. Since leaving Cominco in the late 1980's, Tim has worked on exploration projects throughout North and South America and currently oversees a broad range of projects targeting various commodities throughout British Columbia, Saskatchewan, Yukon and Northwest Territories.

### **Joseph (Joe) Piekenbrock, M.Sc.**

35+ years of mining experience; past VP Exploration for NovaGold Resources Inc.; awarded Thayer Lindsley medal for discovery of Donlin Creek deposit; B.Sc. in Geology from the University of Colorado; M.Sc. in Geology from the University of Arizona.

### **Syd Visser, B.Sc., P.Geo.**

President/Senior Geophysicist at SJ Geophysics Ltd.; 30+ years of international geophysical survey experience; Haileybury School of Mines graduate; B.Sc. in Geology & Geophysics from University of British Columbia.

### **Scott Close, M.Sc., P.Geo.**

President Ethos Geological, Inc.; Senior Technical Advisor and Exploration Manager roles throughout North America; M.Sc. in Earth Sciences from SFU; specializes in resource evaluation and development.

### **Sam Wallingham**

Extensive experience and knowledge in community affairs, First Nations governance, First Nations training, and negotiations. Has worked with several mining companies over the past 25 years in a variety of capacities, including as a community affairs manager, negotiator, and personal manager. Has served on many boards as a First Nations representative and appointee and Yukon government appointee. Currently sits on the Yukon Water Board.

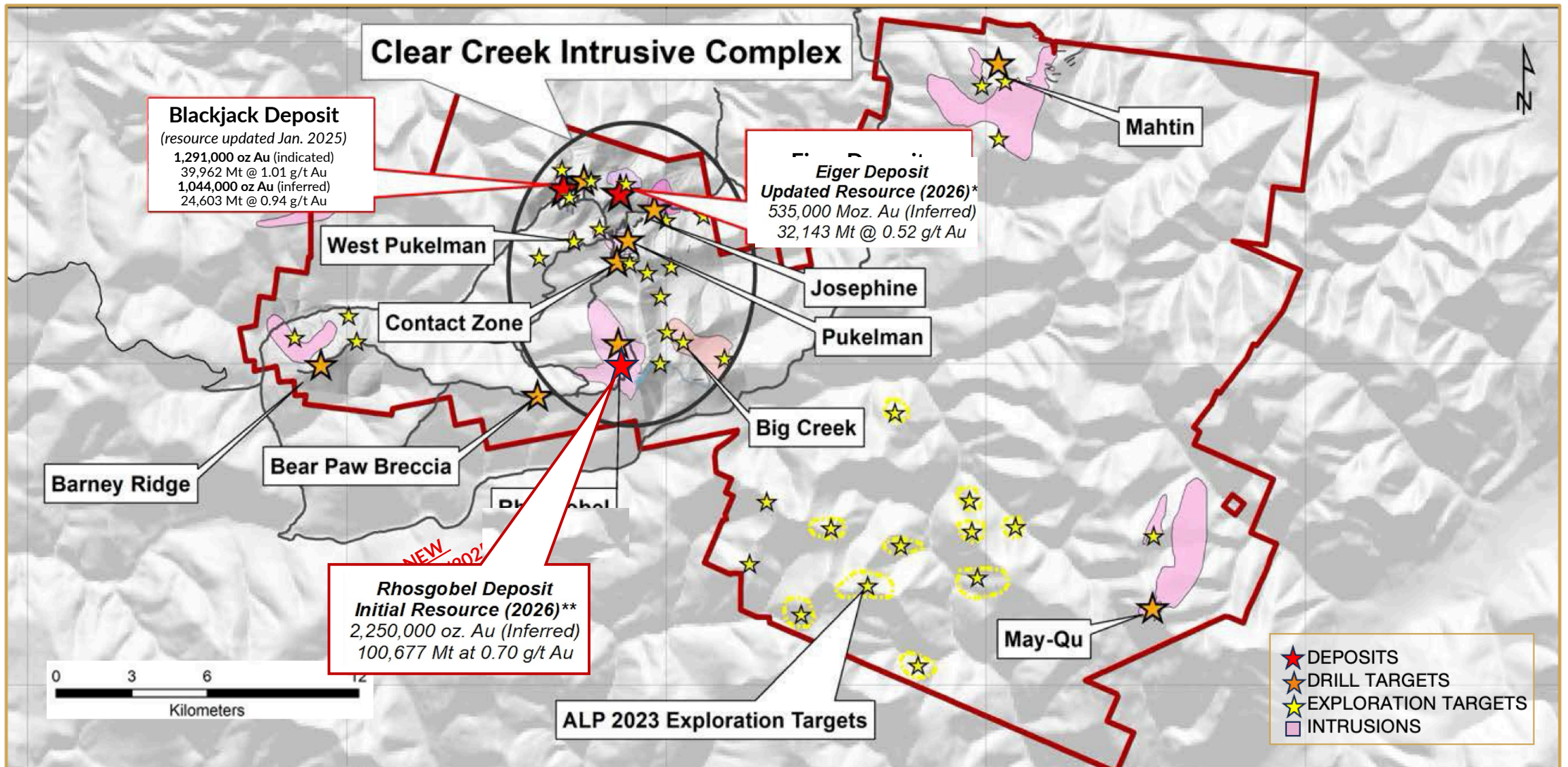
### **Brad Thrall, B.Sc., MBA**

Metallurgical Engineer with 35+ years of experience including corporate executive roles and mine development operations positions. Recently co-founder and President of Alexco Resource Corp. until it was acquired by Hecla Mining in September 2022. Mr. Thrall is currently a Director of Rockhaven Resources, Technical Advisor to Banyan Gold and Board Member of the Yukon Minerals Advisory Board. Mr. Thrall holds a B.Sc. in Metallurgical Engineering from South Dakota School of Mines and Technology and an MBA from the University of Colorado.



Drill turning at the Rhosgobel Deposit– April 15th, 2026

- **Updated MRE Announced February 2026**
  - 3.83 million oz gold inferred
  - 1.29 million oz gold indicated
- **60,000 m Diamond Drill Program Underway**
  - Continuous drill results throughout 2026
  - Potential for significant resource expansion
- **Testing Multiple District-Scale Targets**  
(11 known gold-bearing intrusions)
- **Strong Treasury** (~\$45M as at March 10, 2026)
- **Spin-Out Transaction Progress** Non-Core Assets
- **Metallurgical & Environmental Baseline Studies in Progress**
- **Global Investor Outreach Program**



# SITKA GOLD CORP

TSX.V: SIG  
OTCQX: SITKF  
FRE: 1RF

**Jenn Coe**, VP Corporate Communications

**Phone:** 778-879-7914

**Email:** [jenn@sitkagoldcorp.com](mailto:jenn@sitkagoldcorp.com)

Connect with us!



1500-409 Granville Street  
Vancouver, BC  
V6C 1T2

[www.sitkagoldcorp.com](http://www.sitkagoldcorp.com)