

TSX.V: SIG
OTCQX: SITKF
FRA: 1RF

SITKA **GOLD** CORP

FOCUSED ON DISCOVERY
TURNING VISION INTO VALUE

Q2 2026

Forward Looking Statements

This Presentation contains forward-looking statements that involve risks and uncertainties, which may cause actual results to differ materially from the statements made. When used in this document, the words "may", "would", "could", "will", "intend", "plan", "anticipate", "believe", "estimate", "expect" and similar expressions are intended to identify forward-looking statements. Such statements reflect our current views with respect to future events and are subject to such risks and uncertainties. Many factors could cause actual results to differ materially from the statements made, including those factors discussed in filings made by us with the Canadian or American securities regulatory authorities.

Should one or more of these risks and uncertainties, such as results of current exploration programs, the general risks associated with the mining industry, the price of gold and other metals, currency and interest rate fluctuations, increased competition and general economic and market factors, occur or should assumptions underlying the forward-looking statements prove incorrect, actual results may vary materially from those described herein as intended, planned, anticipated, or expected. We do not intend and do not assume any obligation to update these forward-looking statements. Potential shareholders are cautioned not to put undue reliance on such forward-looking statements.





Drill turning at Blackjack Deposit – March 13, 2026

- **Updated MRE Announced February 2026**
 - 3.83 million oz gold inferred
 - 1.29 million oz gold indicated
- **60,000 m Diamond Drill Program Underway**
 - Continuous drill results throughout 2026
 - Potential for significant resource expansion
- **Testing Multiple District-Scale Targets**
(11 known gold-bearing intrusions)
- **Strong Treasury** (~\$45M as at March 10, 2026)
- **Spin-Out Transaction Progress** Non-Core Assets
- **Metallurgical & Environmental Baseline Studies in Progress**
- **Global Investor Outreach Program**

★ RC GOLD PROJECT (FLAGSHIP), YUKON

- 3.83 million oz gold at 0.72 g/t inferred
- 1.29 million oz gold at 1.01 g/t indicated

★ ALPHA GOLD PROJECT, NEVADA

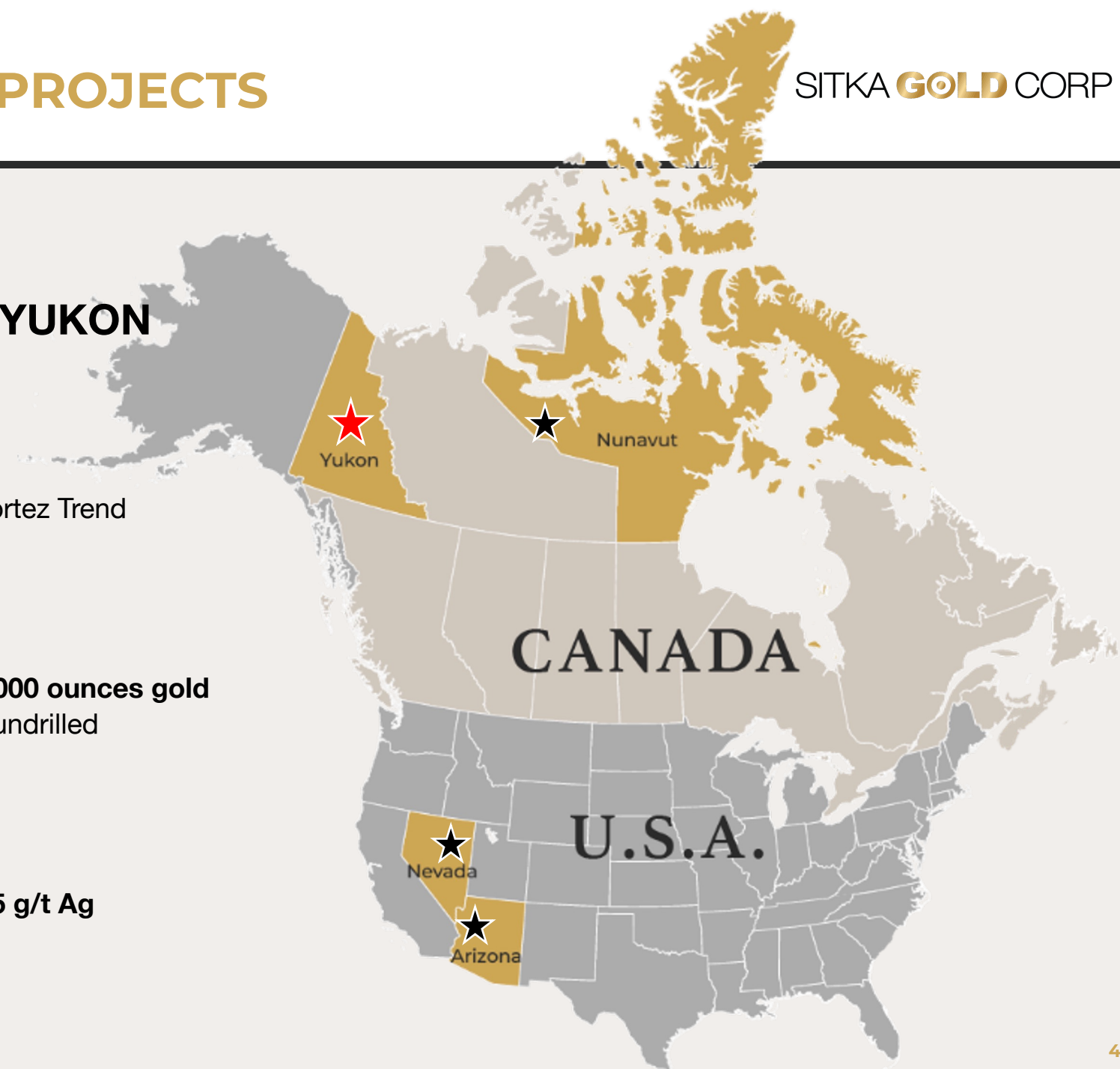
- NEW Carlin-type gold discovery along Nevada's Cortez Trend
- **21.0 m of 1.21 g/t gold** in drill hole AG22-10
- Permitted for drilling

★ BURRO CREEK PROJECT, ARIZONA

- Historical resource: **5 million ounces silver & 120,000 ounces gold**
- 1.5 km epithermal vein traced that is approx. 90% undrilled
- Permitted for drilling

★ COPPERMINE RIVER, NUNAVUT

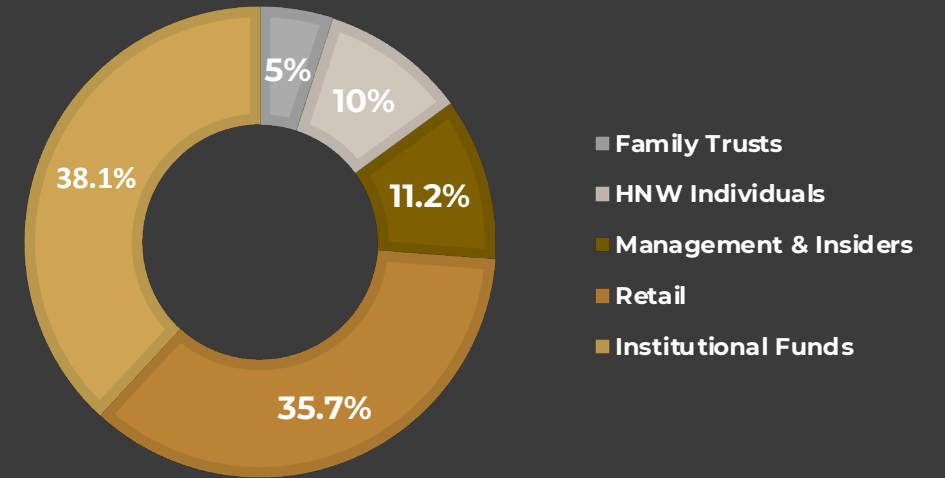
- Volcanic-hosted surface samples up to **41.54% Cu**
- Sediment-hosted samples up to **13.45% Cu** and **65 g/t Ag**



1 YEAR CHART TSX-V: SIG | OTCQX: SITKF | FRA: 1RF as at April 7th, 2026



SHARE OWNERSHIP



INSTITUTIONS



ANALYST COVERAGE

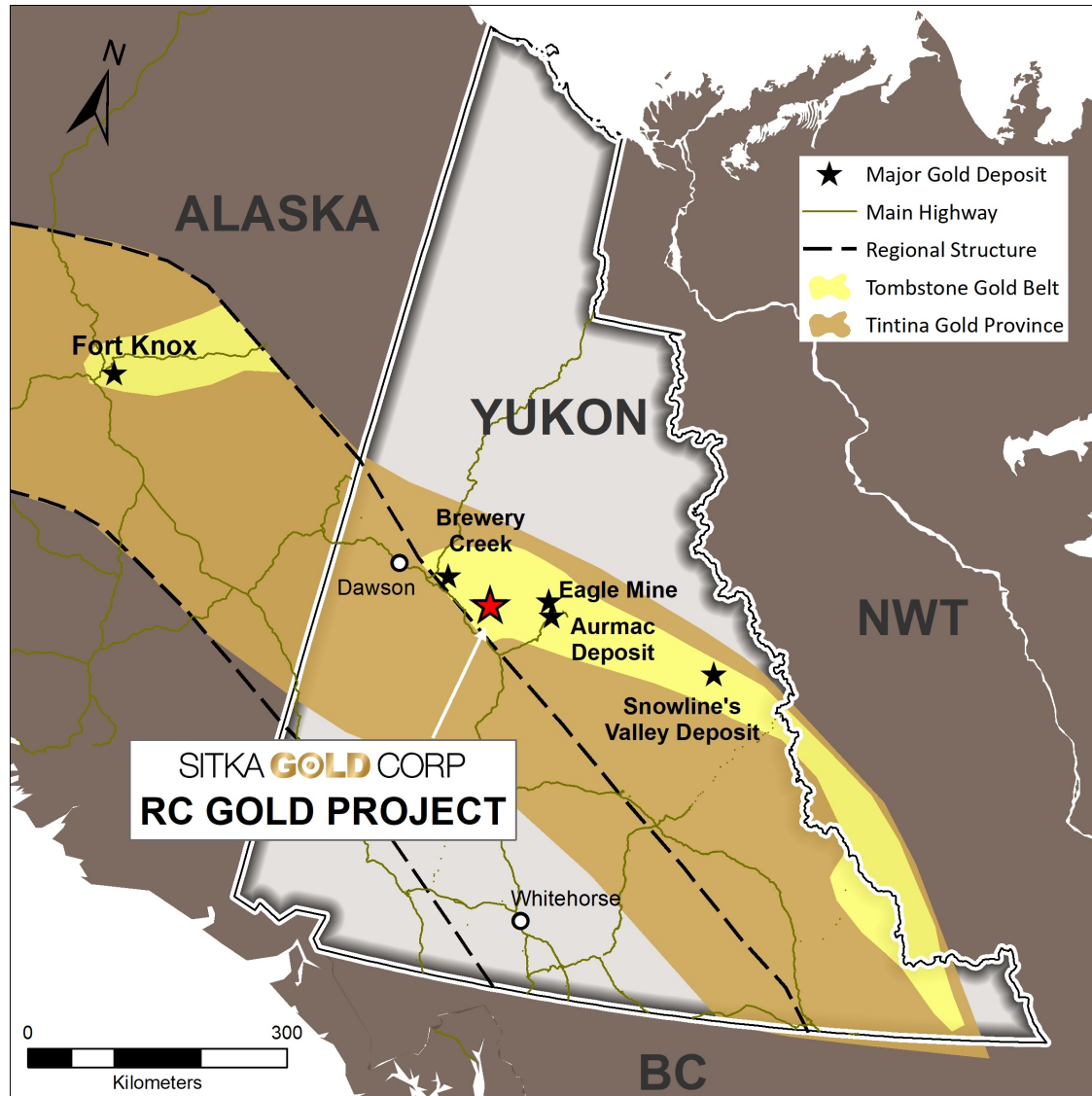


SHARE STRUCTURE

as at April 7th 2026

Shares Outstanding	419,682,009
Warrants (avg. wt. \$0.36)	21,200,000
Options	21,975,000
Fully Diluted	462,857,009
Market Cap at \$0.90/share	~\$378 million

➤ RC GOLD PROJECT LOCATION - ROAD



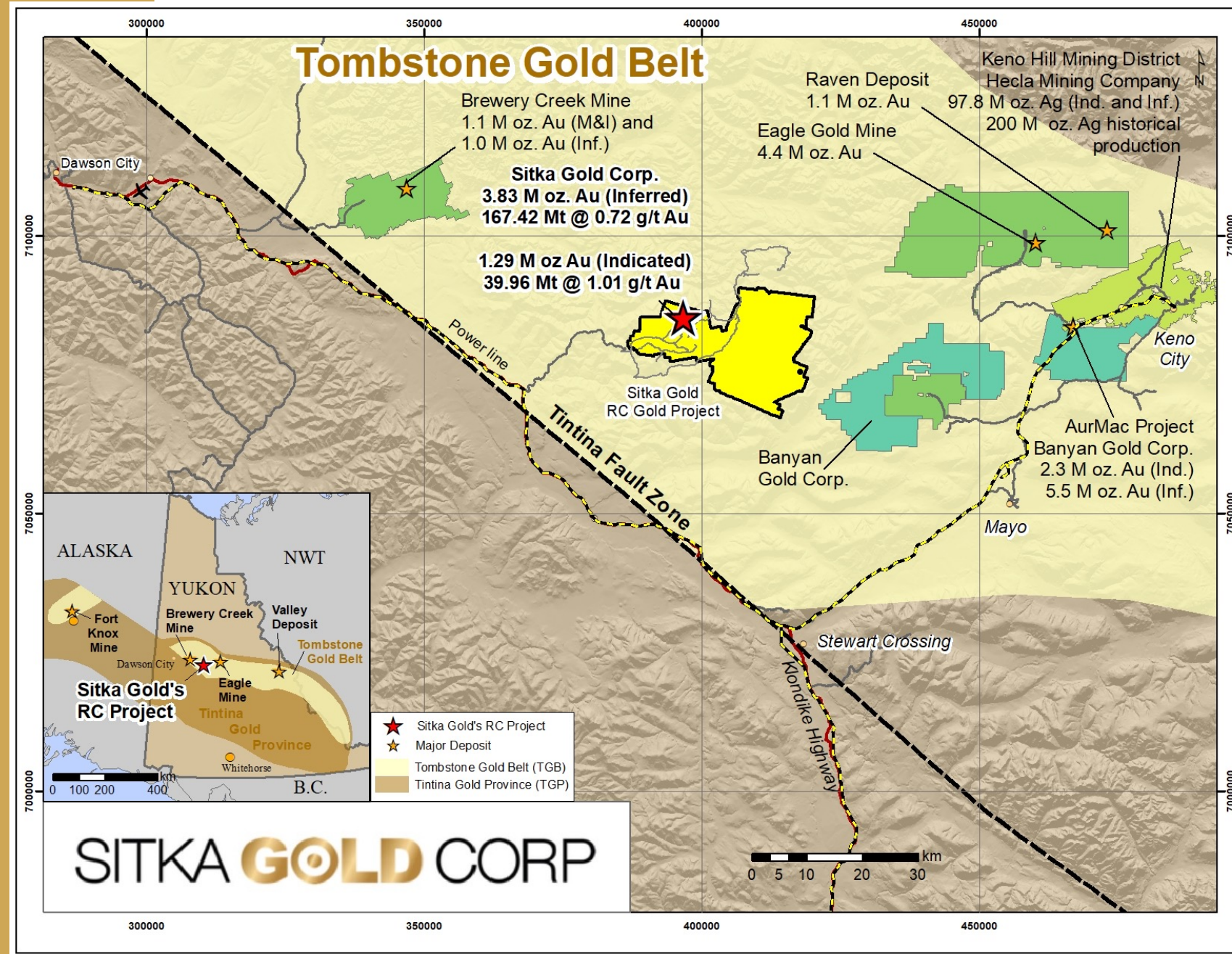
100 km south-east of Dawson City, Yukon, with road access via Clear Creek Road (Km 32) from the Klondike Highway and proximity to 5,000-foot paved runway at Dawson City Airport

The Tombstone Gold Belt is a prolific region within the Tintina Gold Belt, alongside major projects including the Eagle Gold Mine, Brewery Creek, Banyan Gold's AurMac, and Snowline Gold's Valley deposit

447 km² land package in a mining-friendly jurisdiction with proven discovery and development success

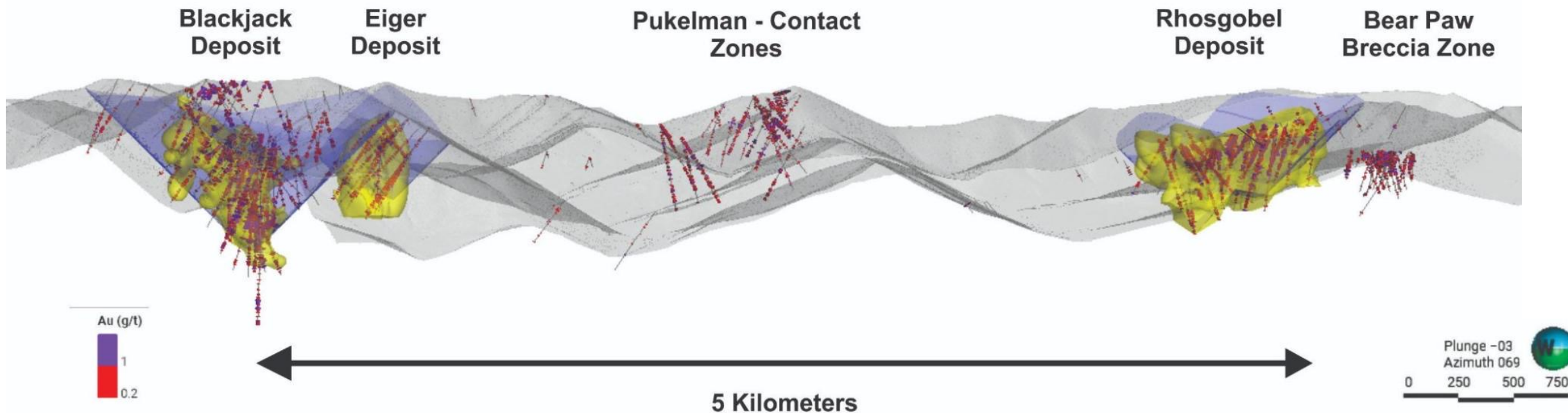
RC GOLD PROJECT DAWSON - MAYO REGION OF THE TOMBSTONE GOLD BELT

Gold Endowment
in this road-
accessible area
has increased by
14 million ounces
since May 2020



CURRENT PIT-CONSTRAINED GOLD RESOURCES AT RC GOLD

➤ 1.29 million oz Au Indicated + 3.38 million oz Au Inferred



Zone	Class	Cut-off Grade (g/t Au)	Tonnes (000's)	Gold Grade (Au g/t)	Oz Au (000's)
Blackjack *	Indicated	0.3	39,962	1.01	1,291
Blackjack *	Inferred	0.3	34,603	0.94	1,044
Rhosgobel**	Inferred	0.3	100,677	0.7	2,250
Eiger**	Inferred	0.3	32,143	0.52	535
Total Inferred	Inferred	0.3	167,423	0.72	3,829

- Total resource is based on three zones: **Blackjack, Eiger and Rhosgobel**
- Resource updated February 25, 2026
- As of the resource update, **165 diamond drill holes** have been drilled into this system by the Company for a total of approximately **59,800 metres**
- *32,000 metre diamond drill program completed 2025*
- **60,000 metre diamond drill program currently underway**

*Simpson R., Clear Creek Property, RC Gold Project NI 43-101 Technical Report, Dawson Mining District, YT. January 21, 2025

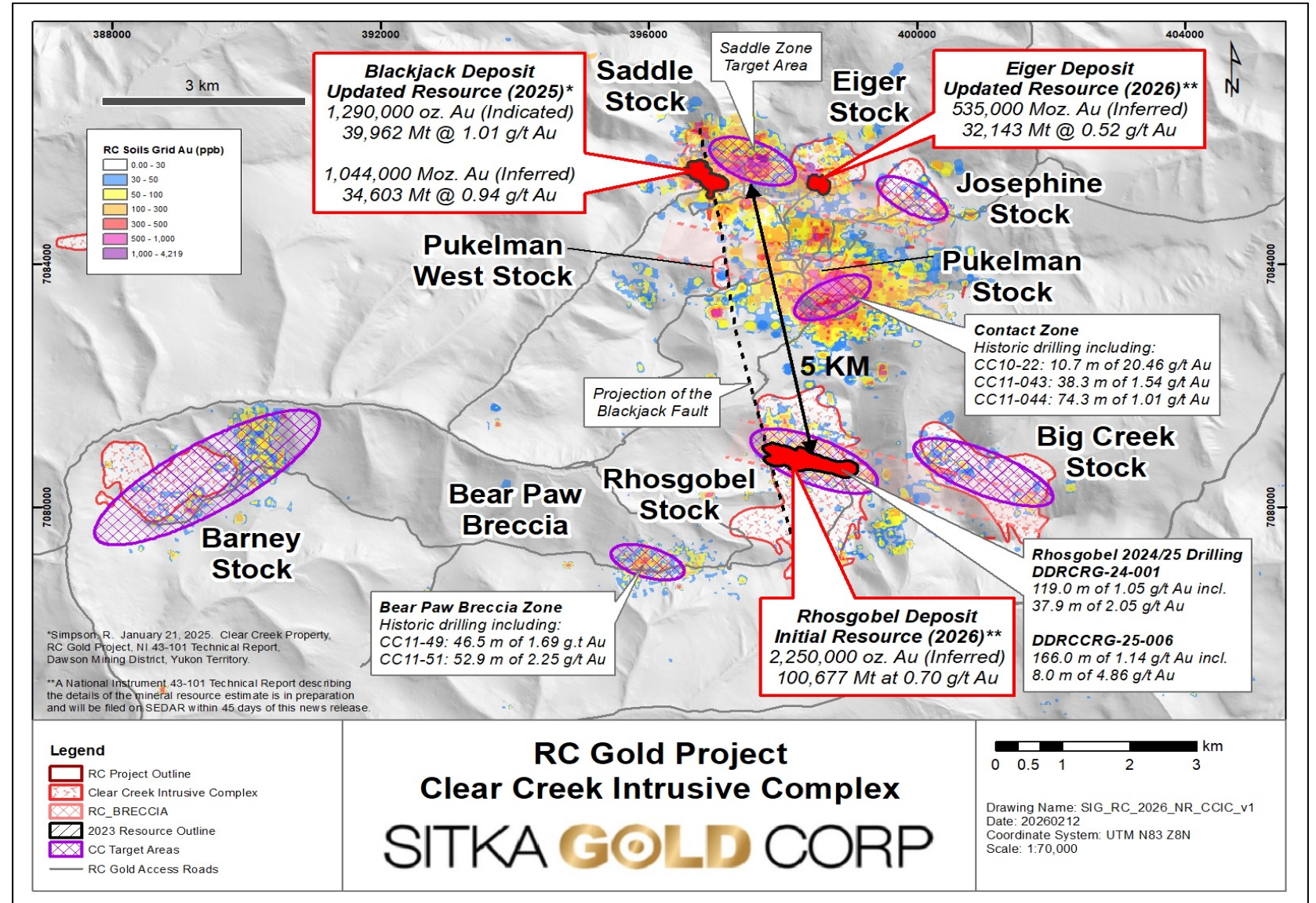
** See Company News Release dated February 25, 2026

RC GOLD PROJECT

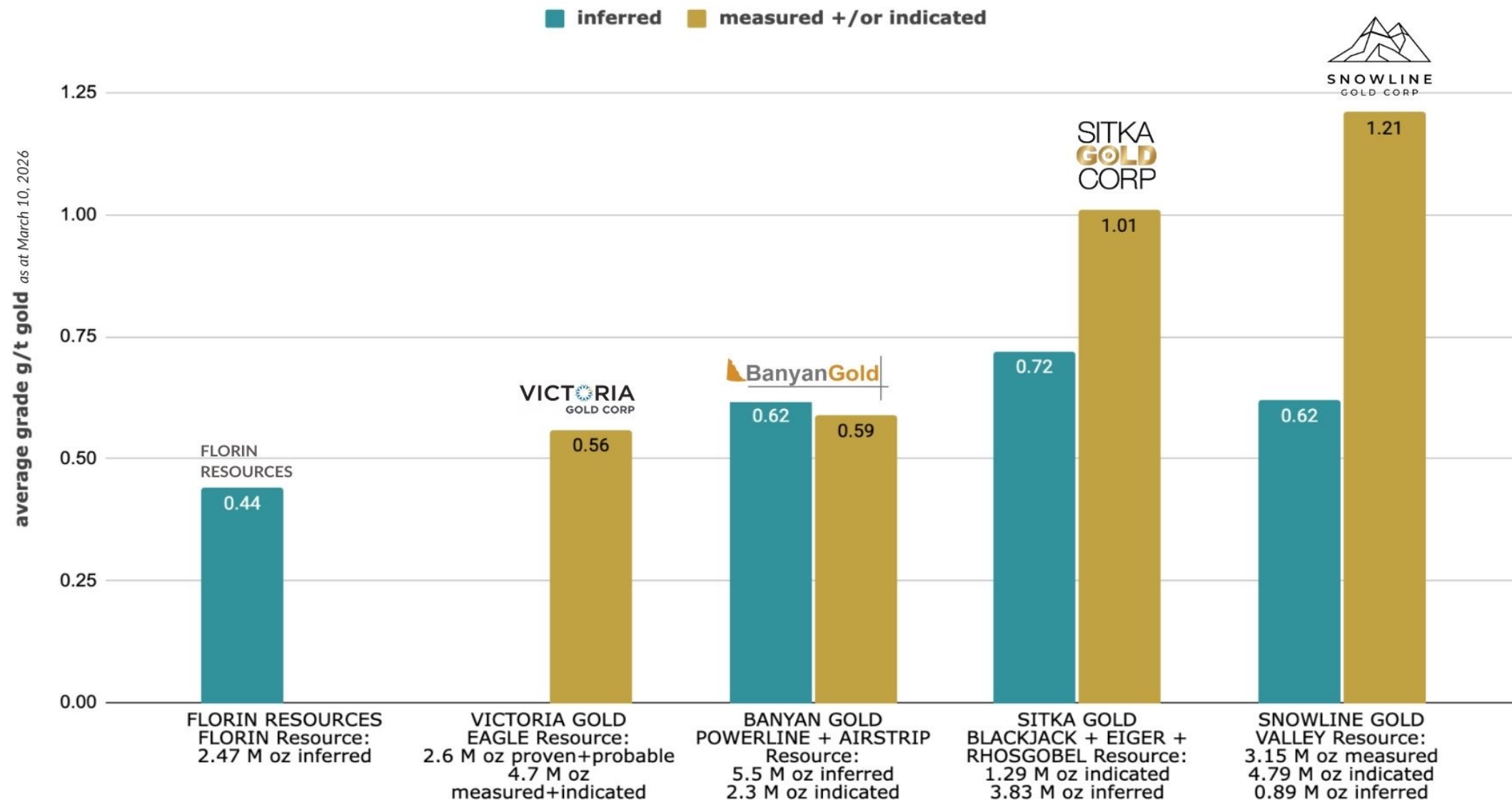
3 Gold Deposits - and Growing

Drill ready targets

- Resource expansion at Blackjack, Eiger and Rhosgobel deposits, Saddle zone drilling to upgrade into resource
- Drilling at Contact and Bear Paw for potential maiden resources
- Additional Drill ready targets at Josephine, Contact, Big Creek and Barney
- Two additional Drill targets outside the CCIC at the May-Qu and Mahtin intrusions



➤ GRADE COMPARISON - Tombstone Gold Belt



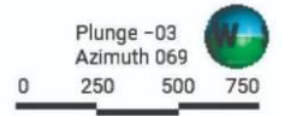
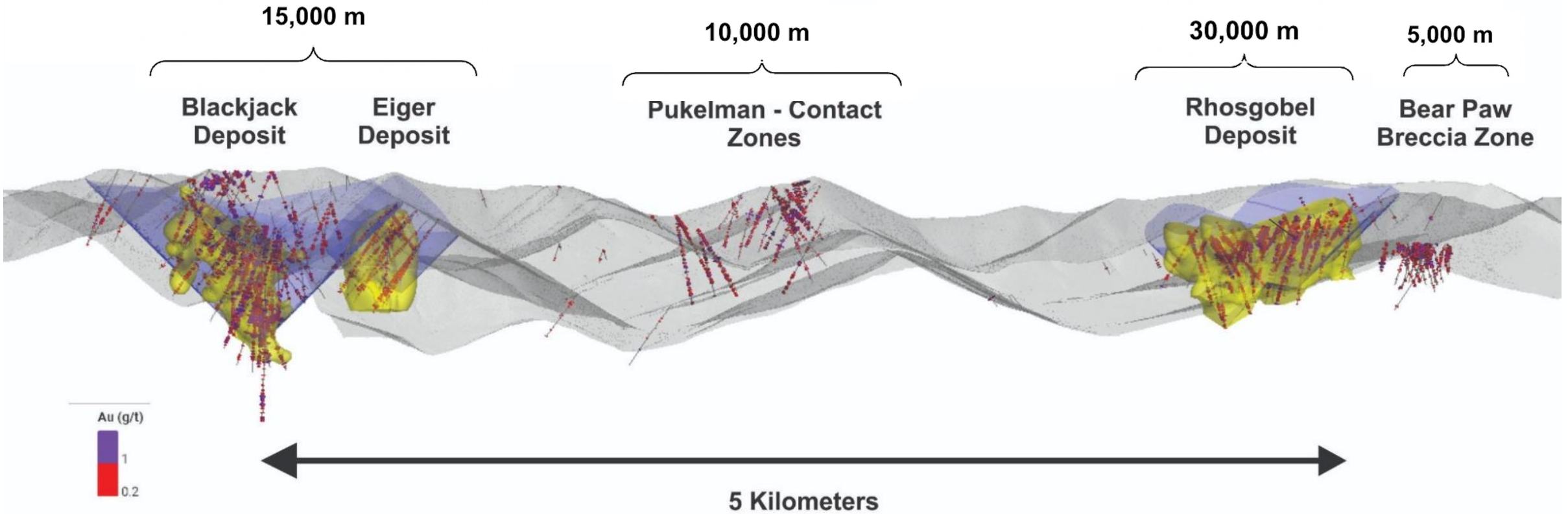


RC GOLD PROJECT

Planned 60,000 Meter Diamond Drill Program

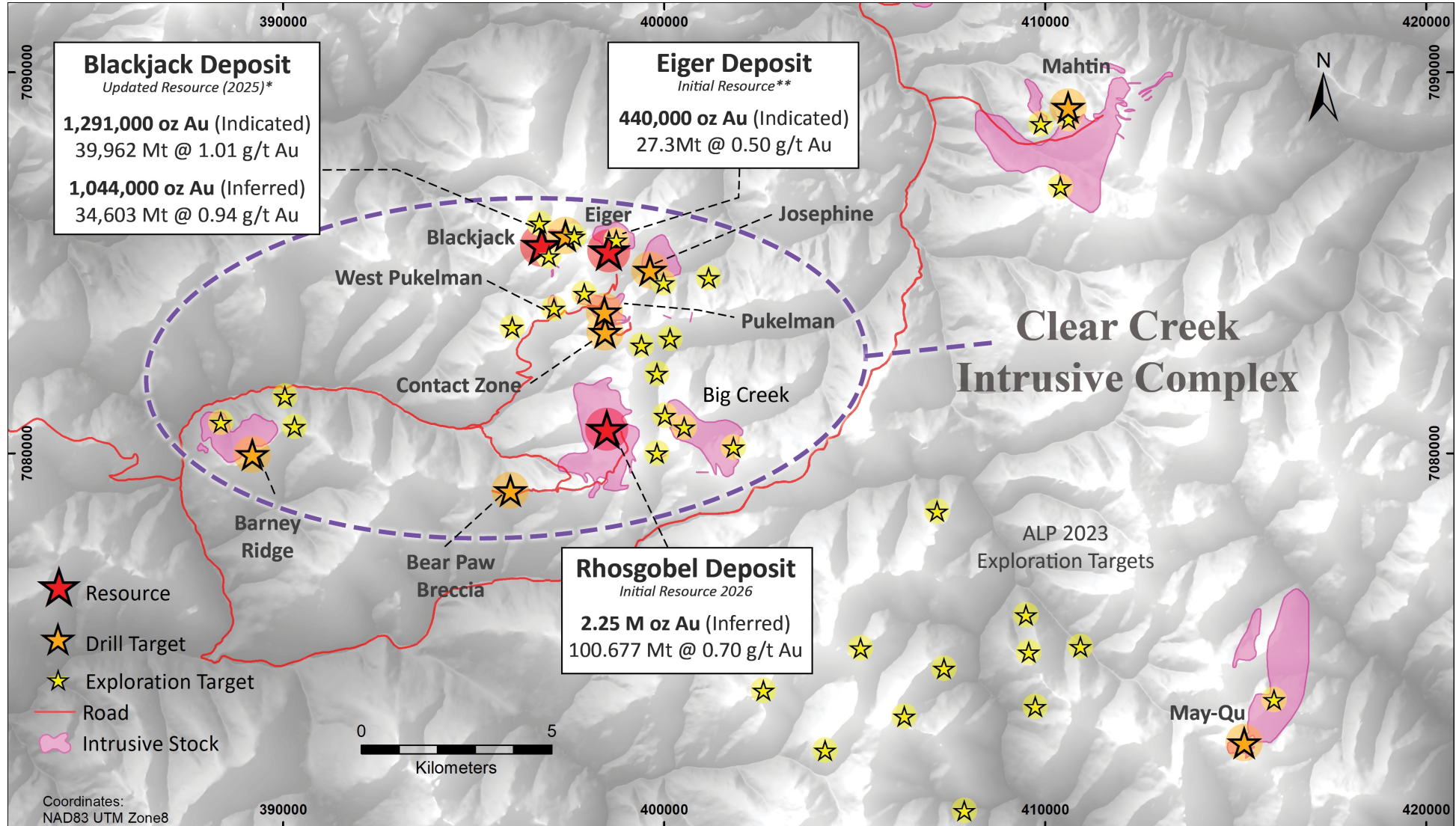
SITKA GOLD CORP

RC GOLD PROJECT
Long Section Looking Northeast
Blackjack to Rhosgobel



RC GOLD PROJECT

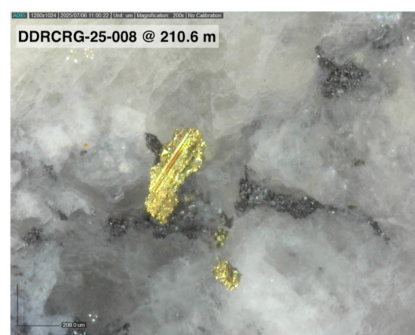
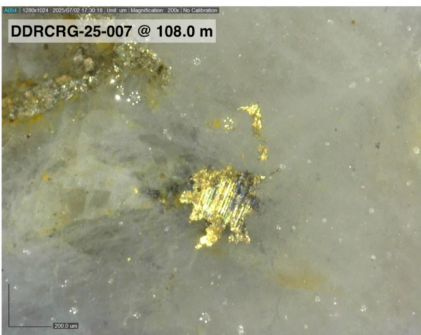
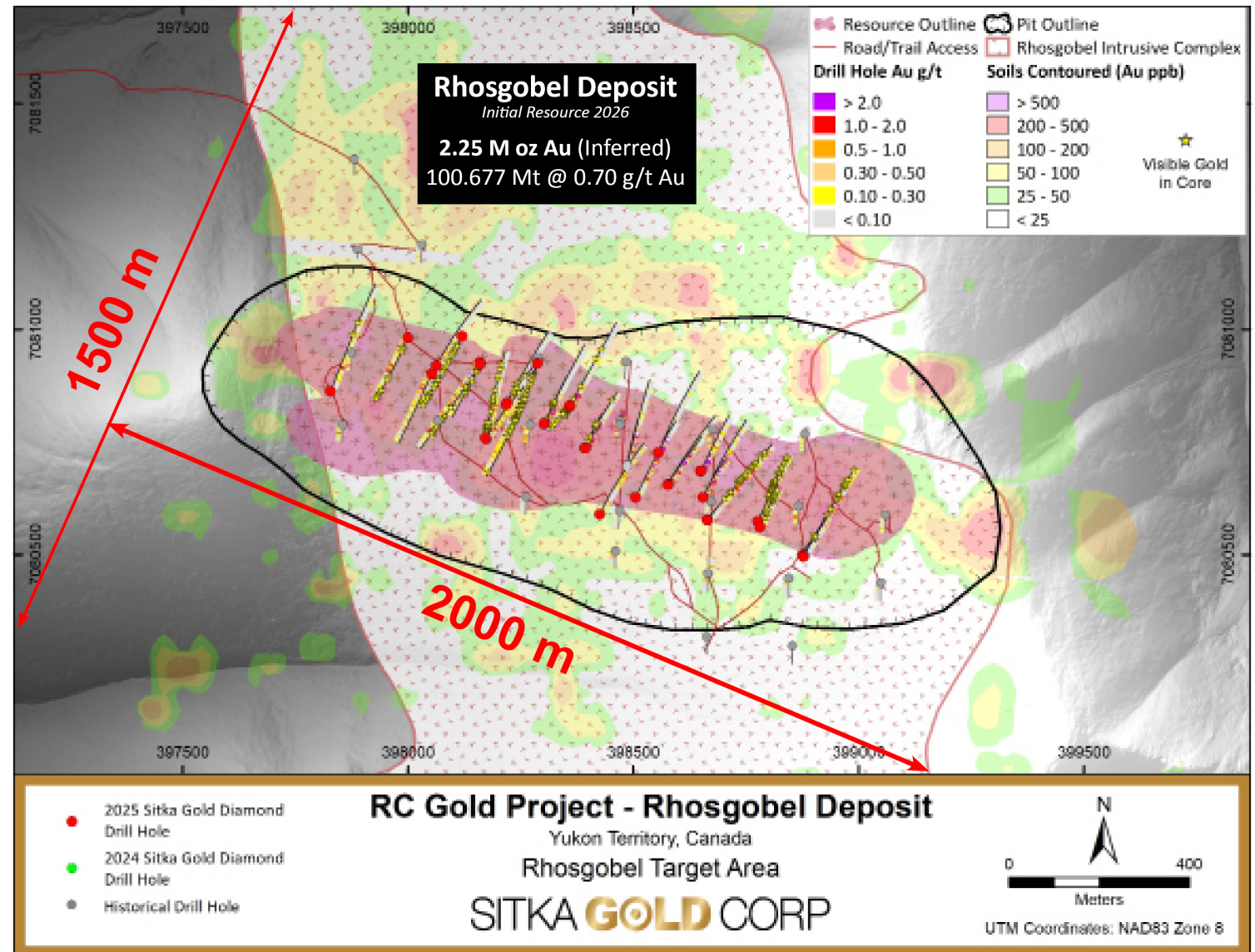
Clear Creek Intrusive Complex



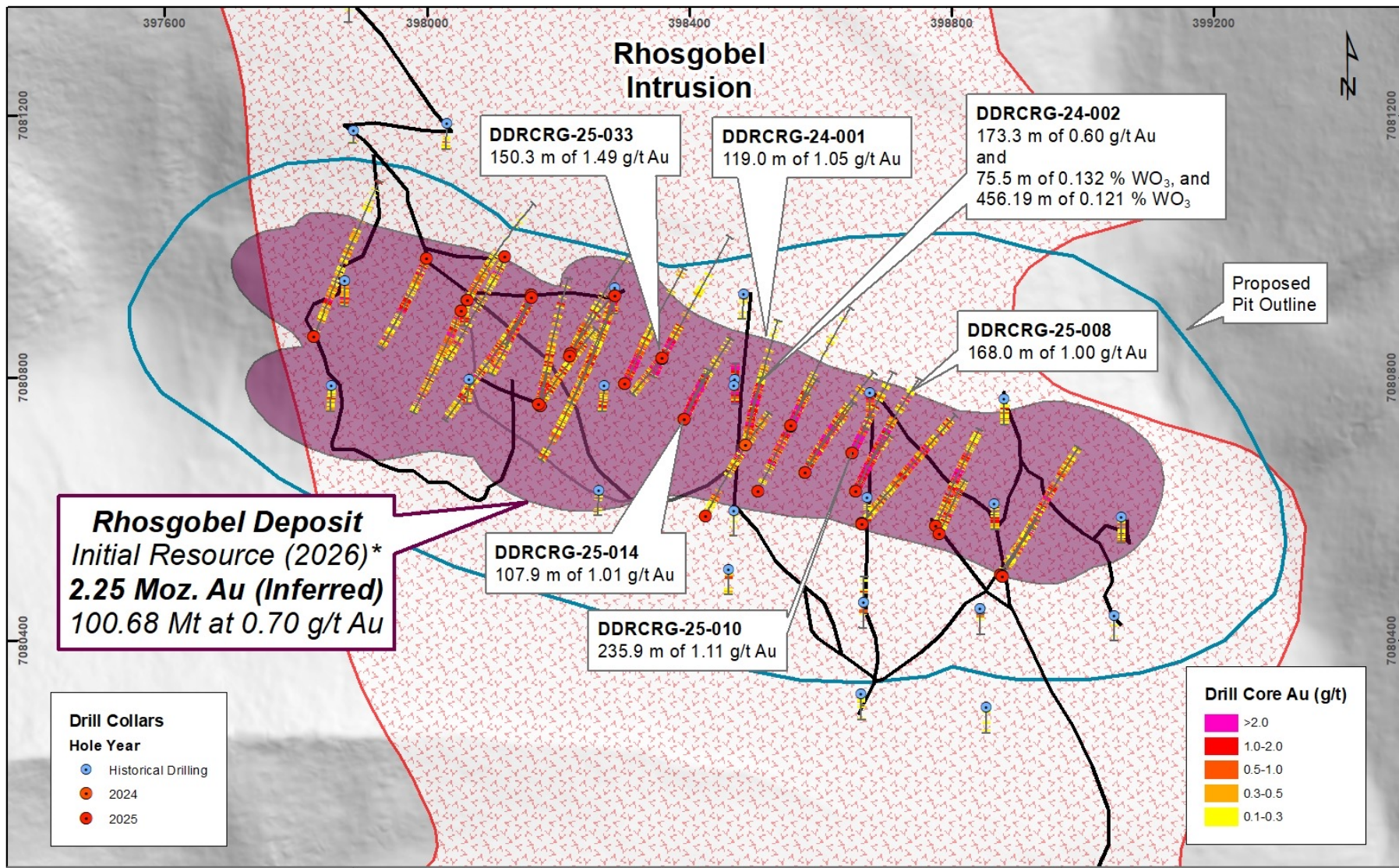
➤ RHOSGOBEL DEPOSIT: 2.25 million oz Au inferred

MAIDEN RESOURCE BASED ON 15,396 METRES OF DRILLING TOTALING 72 HOLES

- **MAIDEN RESOURCE:** 2.25 M oz @ 0.70 g/t Au
Announced Feb. 2026 (0.3 cut-off)
- 30,000 Metres of drilling planned at Rhosgobel in 2026
- **2025:** Discovery hole 24-01 intersected 119.0 m of 1.05 g/t gold including 37.9 m of 2.05 g/t gold
- Hole 25-02 intersected 173.3m of 0.60 g/t Au and 0.095% WO3 including 12.4m of 2.43 g/t Au and 0.21% WO3
- Hole 25-10 intersected 235.9 m of 1.11 g/t gold including 40.0 m of 2.01 g/t gold from surface
- Visible gold in 39 of the 43 holes drilled to date
- 1.1 kilometre strike length



INITIAL MINERAL RESOURCE ESTIMATE OUTLINE WITH CONCEPTUAL PIT-SHELL AND EXAMPLES OF HIGHLIGHTED DRILL HOLE INTERCEPTS.



➤ **RHOSGOBEL DEPOSIT** Inferred Mineral Resource Estimate
 Showing the Sensitivity of the Resource Model to Changing Cut-off Grades

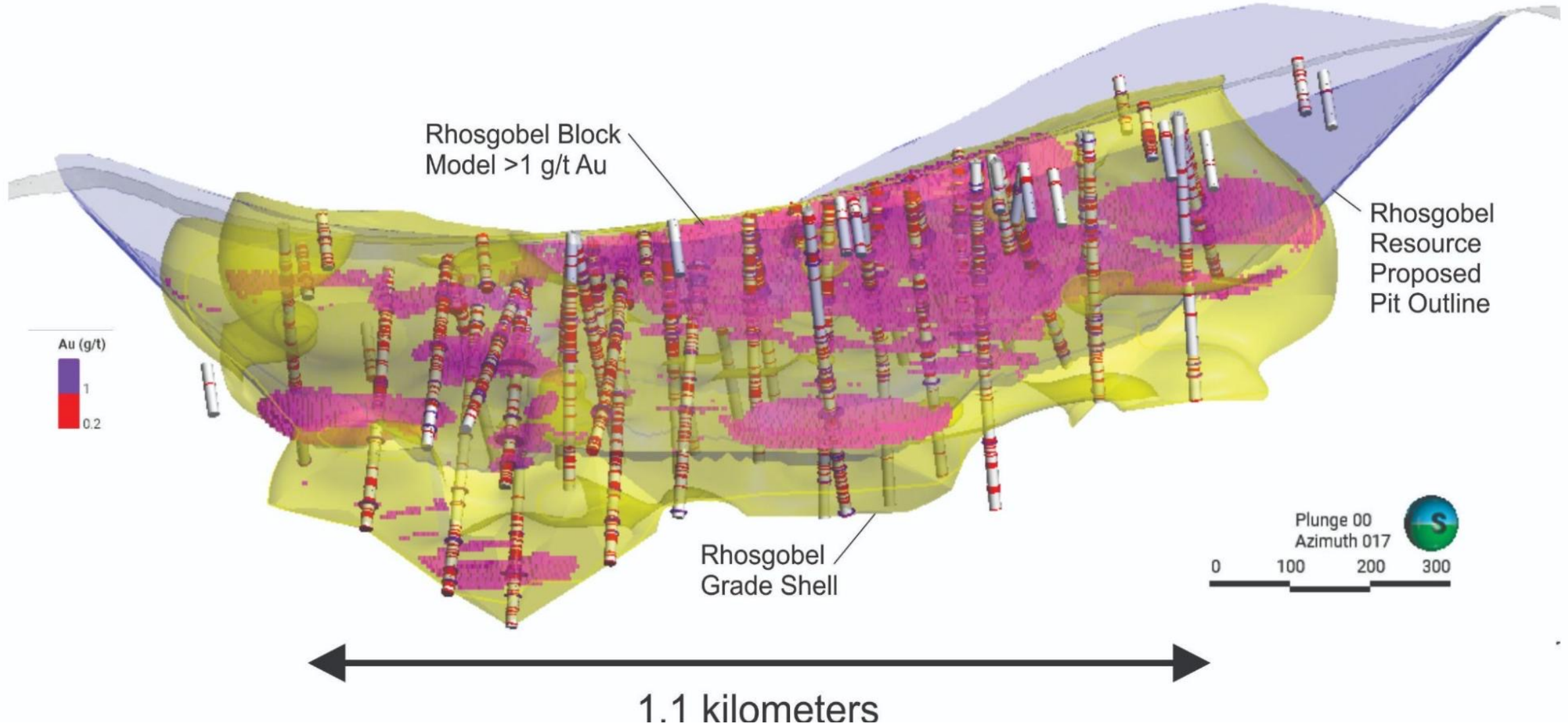
Cut-off Grade (g/t Au)	Tonnes (000's)	Au (g/t)	Oz Au (000's)
0.20	129,683	0.60	2,481
0.25	115,106	0.64	2,380
0.30	100,677	0.70	2,250
0.35	89,620	0.74	2,135
0.40	78,687	0.79	2,004
0.45	68,714	0.85	1,867
0.50	59,768	0.90	1,731
0.55	51,451	0.96	1,591
0.60	44,883	1.02	1,470

Notes:

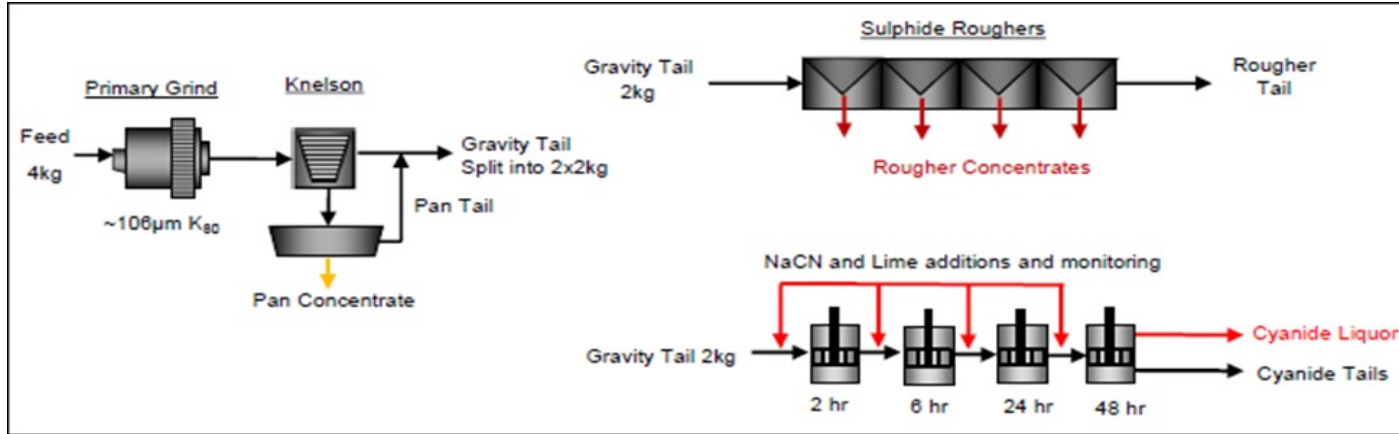
1. Bolded row represents the base case for the mineral resource estimate.
2. Cut-off grades as low as 0.2 g/t Au are still considered to have Reasonable Prospects for Eventual Economic Extraction.

➤ RHOSGOBEL DEPOSIT

Cross Section Looking North Showing >1 g/t Au Block Model



➤ METALLURGY – WHAT HAS BEEN DONE



2022 – Blackjack + Eiger Deposits

- Cyanidation Bottle Roll Testing
- up to 94.1% Recovery**
- Confirmed **non-refractory** characteristics

2025 – Blackjack Deposit

- Conventional Cyanidation Leach
- Gravity Recovery + Gravity Tails Leach
- Gravity Recovery + Gravity Tails Floatation
- up to 93.0% Recovery**

2026 – Rhosgobel

- Conventional Cyanidation Leach
- 89% and 96% recovery
- Blackjack + Eiger + Rhosgobel**
- Additional cyanidation leach, gravity and tails leach, gravity and gravity tails floatation and Tungsten recovery test work

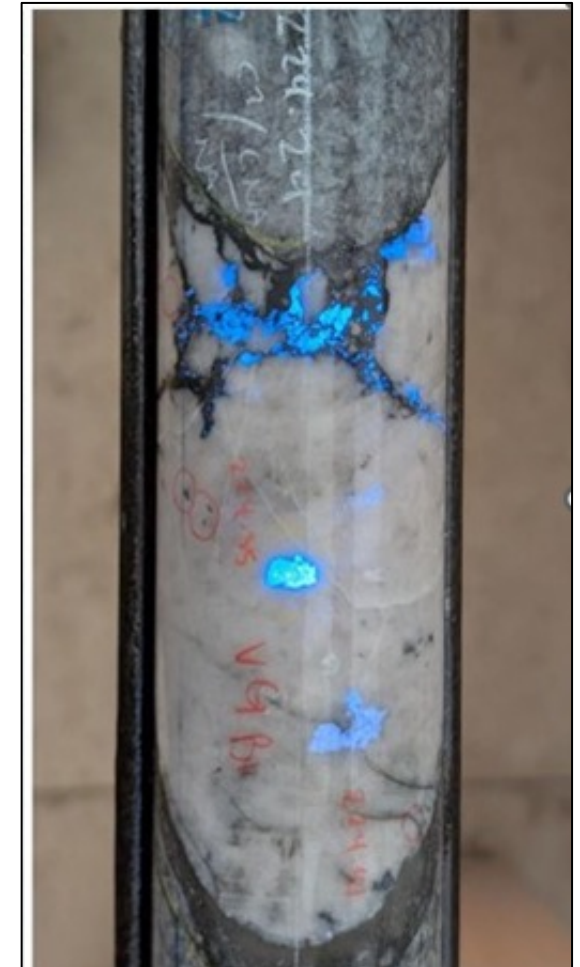


Table 3: Analytical Results for Tungsten (WO₃) mineralization at Rhosgobel (DDRCRG-24-002)

Hole ID	Zone	Length (m)	Azimuth (°)	Dip (°)	From (m)	To (m)*	Length (m)	Gold (g/t)	WO ₃ (Wt %)
Intervals from Company Press Release Dated November 25, 2024 with Tungsten Results									
DDRCRG-24-002	Rhosgobel	400.8	10	-75	97	270.3	173.3	0.6	0.095
Including					105	133.4	28.4	1.37	0.116
Including					121	133.4	12.4	2.43	0.208
Including					167.1	184.5	17.4	1.1	0.139
Including					269.2	270.3	1.1	8.99	0.002
Select Intervals of higher WO₃** mineralization from DDRCRG-25-002									
					119.5	195	75.5	0.84	0.132
and					223	269.19	46.19	0.38	0.121
including					186.66	193.64	6.98	0.55	0.388
including					249.05	249.66	0.61	3.55	4.739

*Intervals are drilled core length, as insufficient drilling has been completed at this time to determine true widths.

**Larger intervals were calculated using a 0.1 % WO₃ Cutoff grade and 20 m waste limit, and narrow intersections were calculated using a 0.5 % WO₃ Cut off grade and a 20 m waste limit. Two different tungsten standards, blanks, and duplicates were submitted in regular intervals in the sampling process and all QA/QC procedures were followed.



Hole 2 -Scheelite (Tungsten)

➤ RC GOLD PROJECT – Blackjack-Saddle-Eiger

2025 BLACKJACK EXPANSION

- 15 drill holes totaling 7,576 m
- Visible gold observed in all holes

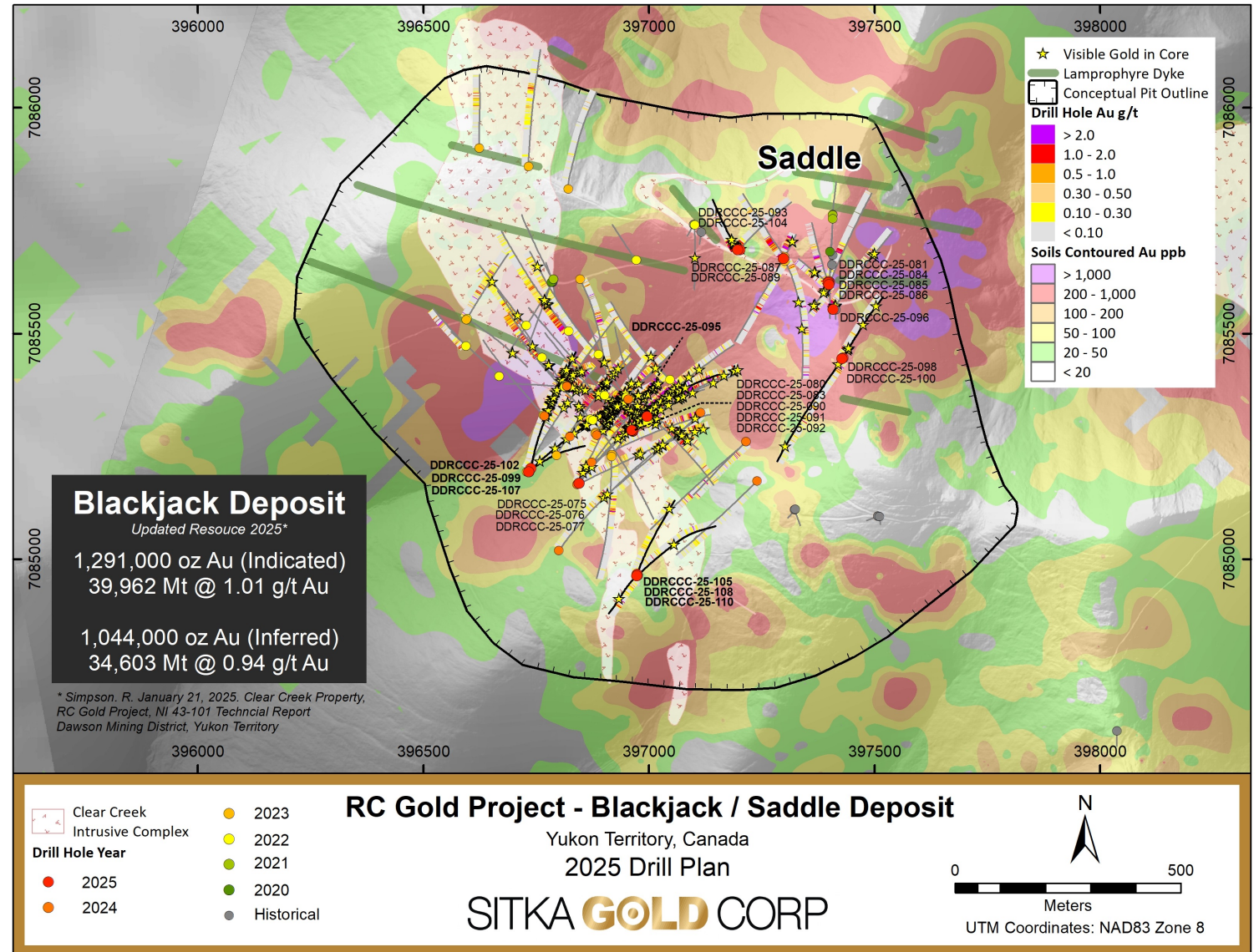
EIGER EXPANSION

- 10 drill holes, totaling 4,461 m
- First drilling since 2021
- Visible gold observed in both intrusive and metasedimentary rocks

SADDLE ZONE

- 11 drill holes totaling 2,918 m
- Within pit limits of Blackjack deposit
- Visible gold observed in both intrusive and metasedimentary rocks
- **47.6 m of 2.09 g/t Au including 8.0 m of 5.07 g/t Au in Hole 87**

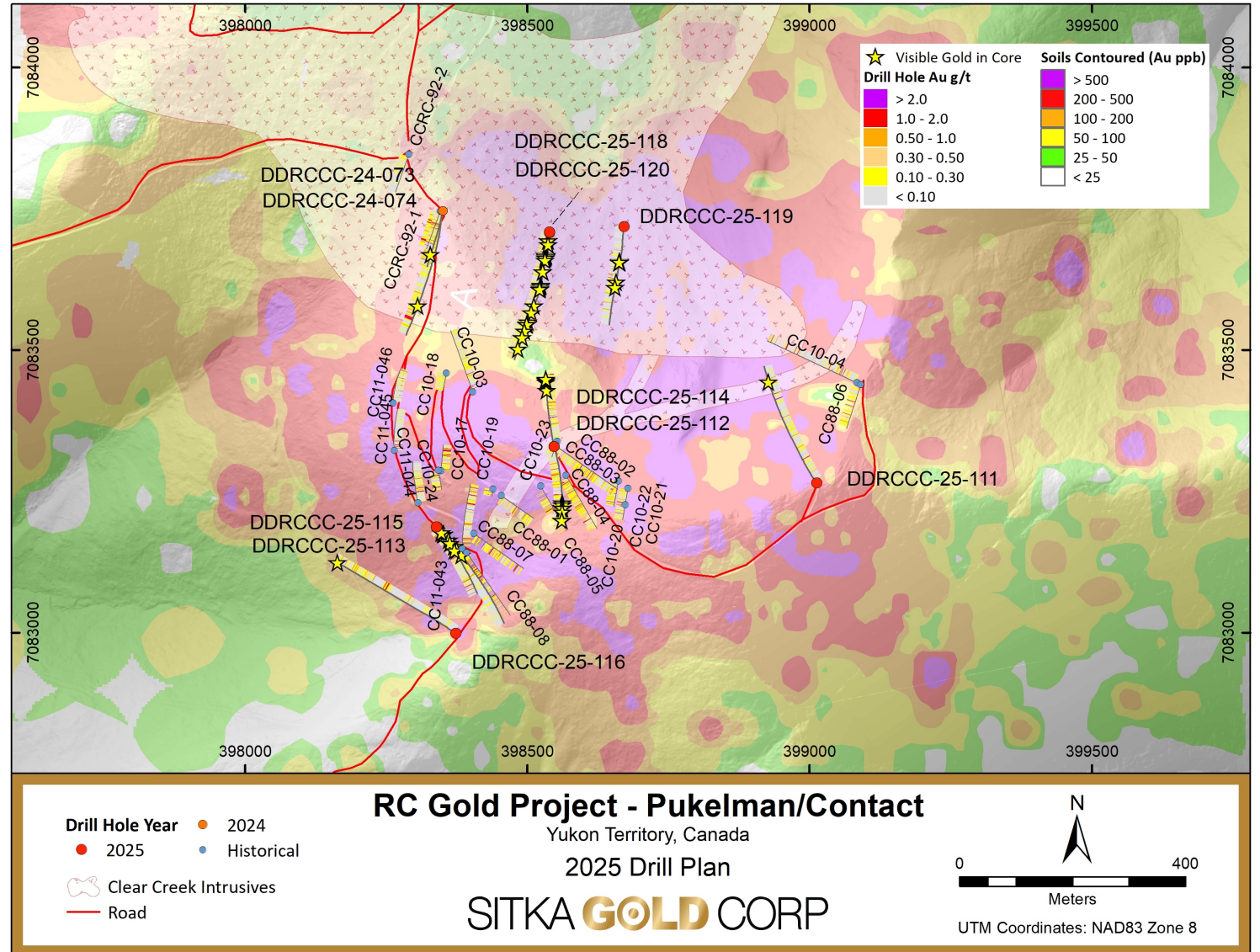
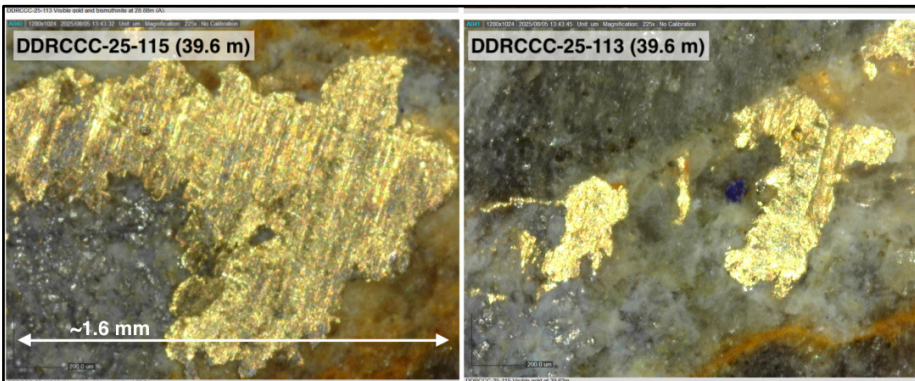
15,000 METERS PLANNED IN 2026

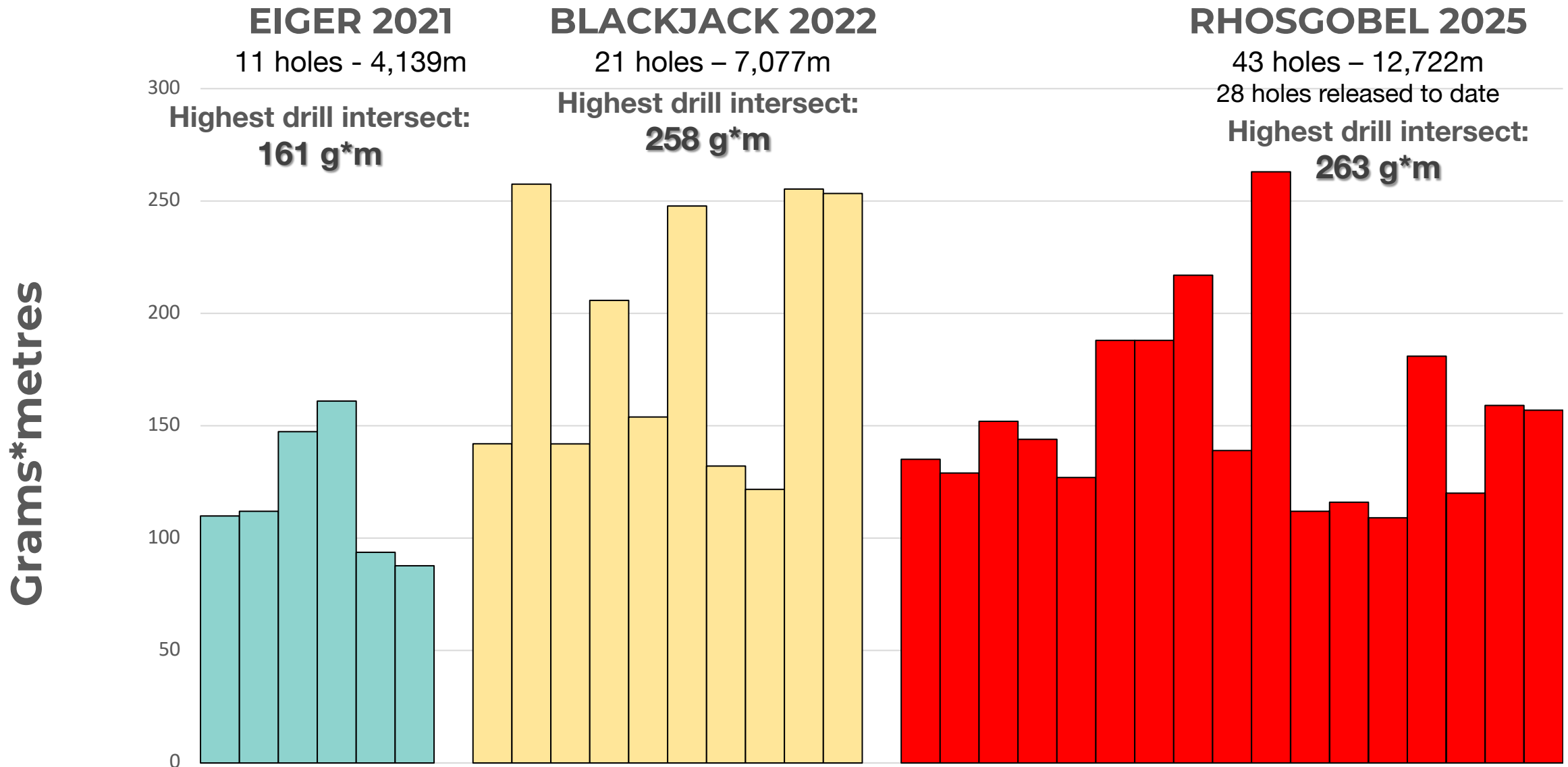


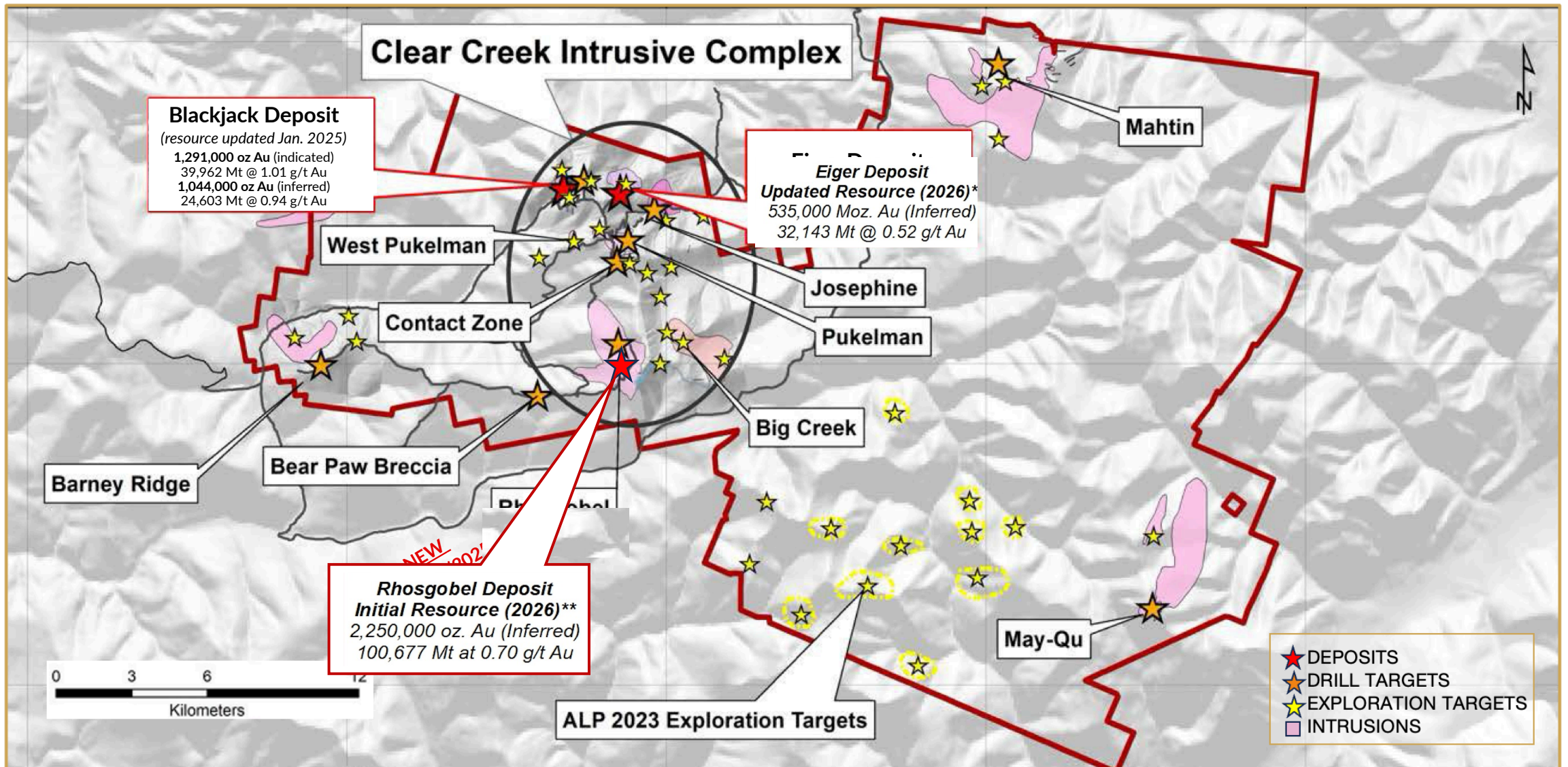
➤ 2025 DRILLING – CONTACT-PUKELMAN ZONE – 5,000 Metres DRILLING ON NEW DISCOVERIES


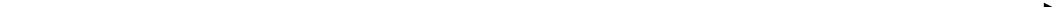
2025 DIAMOND DRILLING PUKELMAN-CONTACT DISCOVERY

- Sitka's 2024 drill hole DDRCCC-24-074 in the intrusion intersected 343.0 m of 0.34 g/t Au, yielding 117 g-m gold
- Sitka tested both intrusion and sediment hosted mineralization with diamond drilling in 2025
- 2025 drilling Hole 113 intersects **119.0 m of 1.01 g/t gold from surface**
- Drilling intersected gold mineralization over a 900 m by 650 m area and to a depth of 430 m







	2025	2026	2027		2028	2029	2030	2031
Deposit(s) definition Exploration	Rhosgobel Discovery	Ongoing 						
Environmental Studies	Baseline	Expanded Baseline	Expanded Baseline	Expanded Baseline	Expanded Baseline	Expanded Baseline		
Engineering			*PEA	*PFS	*PFS	*PFS/FS	*FS	*FS
Assessment, Permitting and Licensing					**YESAB	**YESAB	**YESAB	Water and Quartz Mining Licenses
Indigenous Participation	First Nations Participation and Engagement 							

*Preliminary Economic Assessment, Pre-Feasibility Study, Feasibility Study

** Yukon Environmental and Socio-Economic Assessment Board

MANAGEMENT & BOARD OF DIRECTORS

Corwin (Cor) Coe, B.Sc., P.Geo. – Director & CEO

35+ years experience in the mining sector primarily in Arizona, Nevada and Yukon; has put 2 mines into production & is credited with discovery of a 2.0 M oz gold deposit; Professional Geologist and Mining Engineering Technologist with a B.Sc. in Earth Sciences from SFU; diploma in Mining Engineering Technology from BCIT. Raised more than \$100 Million for Sitka Gold to date.

Donald Penner, B.Sc. – Director & President President of DF Penner Geological Consulting Ltd., worked on grassroots to feasibility projects in North and South America, Africa and Europe since 1969; B.Sc. In Geological Sciences from University of British Columbia.

Mike Burke, B.Sc., P.Geo. – Director & VP of Corporate Development 35+ years experience in the mining sector primarily in the Yukon. Professional Geologist with a B.Sc. in Geology from UBC. Experience includes underground and open pit mine geologist, 20+ years with the Yukon Geological Survey as Head of Mineral Services, Chief Geologist for Golden Predator, Senior Operations Manager for Ensero Solutions.

Scott Price, B.Sc., M.Sc. – Operations Manager (USA) 25 years of experience with a focus on gold exploration in Nevada; worked on several discoveries throughout Nevada and on the Pebble deposit in Alaska; B.Sc. in geology from University of Wyoming; M.Sc. in geology from Washington State University.

Stephen Pearce, LL.B. – Director & CFO Director and Officer of several resource-related companies; specializes in corporate finance and securities; Law degree from UBC; Honours degree in economics from York University.

Gilles Dessureau, P.Geo. – VP Exploration Professional Geologist with 20+ years in the mining sector. 10+ years spent in the Yukon including Fireweed's Mac Pass and Golden Predator's Brewery Creek. Mr. Dessureau holds a Masters in Geology from Laurentian University.

INDEPENDENT DIRECTORS

Louis Archambeault, M.Eng - Independent Director Senior mining executive with 20 + years spanning corporate development, strategy, capital markets, M&A and technical project development. Past experience includes 6+ years at CIBC World Markets, Director of Corporate Development at Goldcorp and VP of Strategy and Corporate Development at Orezone Gold Corp.

Angus Campbell, B.Sc. - Independent Director

30 years of global project experience including working on greenfield, brownfield and mine development projects. Most recently, VP Ex for Sabina Gold and Silver Corp acquired by B2Gold Corp. in 2023 for \$1.2 billion. 10 years with Sabina, Angus led exploration initiatives that resulted in new deposit discovery and over 2.5 million ounces of resource growth. Prior to Sabina, he was Exploration Manager for Chile with BHP Billiton based in Santiago.

Caroline Hendrick - Independent Director

Caroline Hendrick, JD, is a corporate and securities lawyer at DuMoulin Black, advising public and private companies on capital markets transactions, including financings, mergers and acquisitions, and regulatory compliance. Dual-qualified in British Columbia and New York, she brings a strong background in capital markets and supports Sitka's governance and capital markets capabilities.

ADVISORY BOARD

Dr. Craig Hart, PhD, FSEG, FGAC – Independent Chair, Snowline Gold

An internationally recognized geoscientist who played a pivotal role in the development of intrusion-related gold systems, such as those that form gold at Sitka's RC Gold Project. A founding geologist of the Yukon Geological Survey and former head of its Mineral Services Division. Dr. Hart holds a PhD from the University of Western Australia and has contributed to the publication of >150 scientific papers.

Tim Termuende, B.Sc, P.Geo

Tim, President, executive chairman and Co-founder of Eagle Plains Resources, is a professional geologist with over 40 years' experience in the mineral exploration industry. Since leaving Cominco in the late 1980's, Tim has worked on exploration projects throughout North and South America and currently oversees a broad range of projects targeting various commodities throughout British Columbia, Saskatchewan, Yukon and Northwest Territories.

Joseph (Joe) Piekenbrock, M.Sc.

35+ years of mining experience; past VP Exploration for NovaGold Resources Inc.; awarded Thayer Lindsley medal for discovery of Donlin Creek deposit; B.Sc. in Geology from the University of Colorado; M.Sc. in Geology from the University of Arizona.

Syd Visser, B.Sc., P.Geo.

President/Senior Geophysicist at SJ Geophysics Ltd.; 30+ years of international geophysical survey experience; Haileybury School of Mines graduate; B.Sc. in Geology & Geophysics from University of British Columbia.

Scott Close, M.Sc., P.Geo.

President Ethos Geological, Inc.; Senior Technical Advisor and Exploration Manager roles throughout North America; M.Sc. in Earth Sciences from SFU; specializes in resource evaluation and development.

Sam Wallingham

Extensive experience and knowledge in community affairs, First Nations governance, First Nations training, and negotiations. Has worked with several mining companies over the past 25 years in a variety of capacities, including as a community affairs manager, negotiator, and personal manager. Has served on many boards as a First Nations representative and appointee and Yukon government appointee. Currently sits on the Yukon Water Board.

Brad Thrall, B.Sc., MBA

Metallurgical Engineer with 35+ years of experience including corporate executive roles and mine development operations positions. Recently co-founder and President of Alexco Resource Corp. until it was acquired by Hecla Mining in September 2022. Mr. Thrall is currently a Director of Rockhaven Resources, Technical Advisor to Banyan Gold and Board Member of the Yukon Minerals Advisory Board. Mr. Thrall holds a B.Sc. in Metallurgical Engineering from South Dakota School of Mines and Technology and an MBA from the University of Colorado.

SITKA GOLD CORP

TSX.V: SIG
OTCQX: SITKF
FRE: 1RF

Jenn Coe, VP Corporate Communications

Phone: 778-879-7914

Email: jenn@sitkagoldcorp.com

Connect with us!



1500-409 Granville Street
Vancouver, BC
V6C 1T2

www.sitkagoldcorp.com