

SITKA **GOLD** CORP

TSX-V: SIG  
OTCQB: SITKF  
FSE: 1RF

**FOCUSED ON DISCOVERY**  
**TURNING VISION INTO VALUE**



**Q1 2026**

## Forward Looking Statements

*This Presentation contains forward-looking statements that involve risks and uncertainties, which may cause actual results to differ materially from the statements made. When used in this document, the words "may", "would", "could", "will", "intend", "plan", "anticipate", "believe", "estimate", "expect" and similar expressions are intended to identify forward-looking statements. Such statements reflect our current views with respect to future events and are subject to such risks and uncertainties. Many factors could cause actual results to differ materially from the statements made, including those factors discussed in filings made by us with the Canadian or American securities regulatory authorities.*

*Should one or more of these risks and uncertainties, such as results of current exploration programs, the general risks associated with the mining industry, the price of gold and other metals, currency and interest rate fluctuations, increased competition and general economic and market factors, occur or should assumptions underlying the forward-looking statements prove incorrect, actual results may vary materially from those described herein as intended, planned, anticipated, or expected. We do not intend and do not assume any obligation to update these forward-looking statements. Potential shareholders are cautioned not to put undue reliance on such forward-looking statements.*



A **Diverse Portfolio** Within Proven, **Mining-friendly Jurisdictions**. From Grassroots Discoveries to Growing Existing Deposits

## ★ RC GOLD PROJECT (FLAGSHIP), YUKON

- NEW INTRUSION-RELATED GOLD DEPOSITS IN THE TOMBSTONE GOLD BELT
- 1.29 m oz Au at 1.01 g/t Au Indicated *and* 1.04 m oz Au at 0.94 g/t Au Inferred at the **Blackjack Deposit**
- 535,000 oz Au at 0.52 g/t Au Inferred at the **Eiger Deposit**
- 2.250 m oz Au at 0.70 g/t inferred at the **Rhosgobel Deposit**
- 2026 – 60,000 metre diamond drill program currently underway

## ★ ALPHA GOLD PROJECT, NEVADA

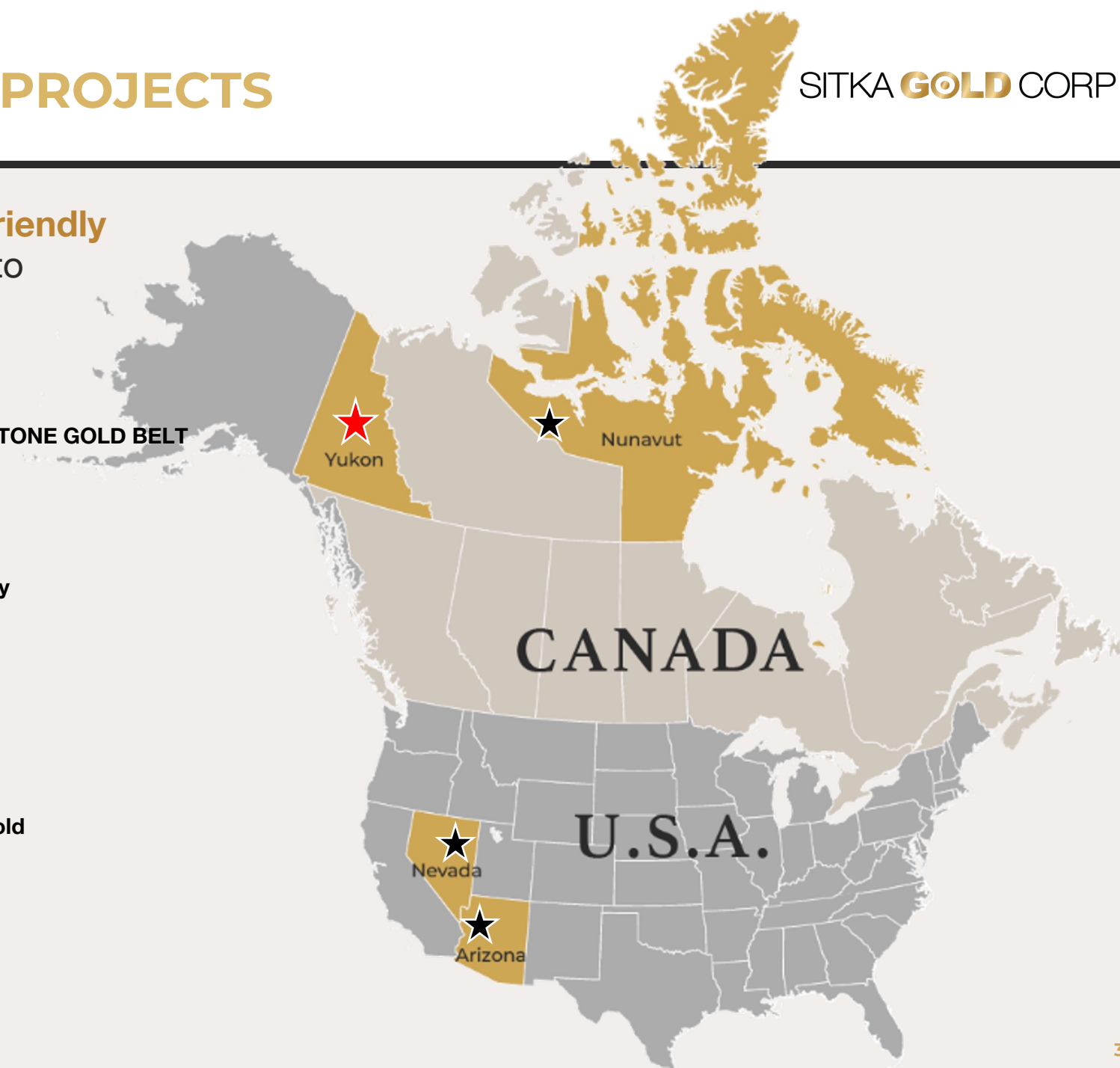
- NEW Carlin-type gold discovery along Nevada's Cortez Trend
- **21.0 m of 1.21 g/t gold** in drill hole AG22-10
- Permitted for drilling

## ★ BURRO CREEK PROJECT, ARIZONA

- Historical resource: **5 million ounces silver & 120,000 ounces gold**
- 1.5 km epithermal vein traced that is approx. 90% undrilled
- Permitted for drilling

## ★ COPPERMINE RIVER, NUNAVUT

- Volcanic-hosted surface samples up to **41.54% Cu**
- Sediment-hosted samples up to **13.45% Cu** and **65 g/t Ag**



## 2025 HIGHLIGHTS

### **BRAND NEW DISCOVERY - RHOSGOBEL ~13,000 m in 43-holes**

Assay results intersect gold mineralization over 1.1 km strike length  
Open in all directions.

DDRCRG-25-010 returned **235.9 m of 1.11 g/t Au**

DDRCRG-25-004 returned **85.4 m of 0.138% WO<sub>3</sub> (tungsten trioxide)**

**32 holes currently submitted for further tungsten analyses**

### **DEPOSIT EXPANSION – BLACKJACK-SADDLE-EIGER – 14,895 m in 36-holes complete**

Blackjack expanded in near surface. potential underground resource intersected  
Saddle zone successfully intersected within conceptual Blackjack pit limits  
Eiger intersected beyond current Mineral resource estimate

### **FOUR ADDITIONAL TARGET AREAS DRILL TESTED – 5,000 m**

Contact-Pukelman target Hole 113 returned **119.0 m of 1.01 g/t Au** from surface

## 2026 CATALYSTS

**\$45 MILLION IN TREASURY** (as at, January 15, 2026)

**PLANNED 60,000 M DIAMOND DRILL PROGRAM CURRENTLY UNDERWAY**

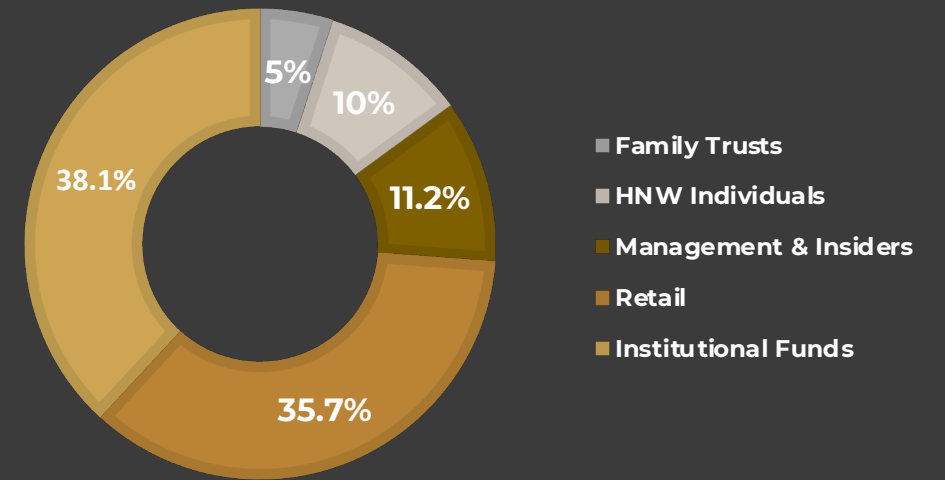
**INITIAL MINERAL RESOURCE ESTIMATE – RHOSGOBEL DEPOSIT**



1 YEAR CHART TSX-V: SIG | OTCQB: SITKF | FRA: 1RF as at March 10th, 2026



## SHARE OWNERSHIP



## INSTITUTIONS



## ANALYST COVERAGE

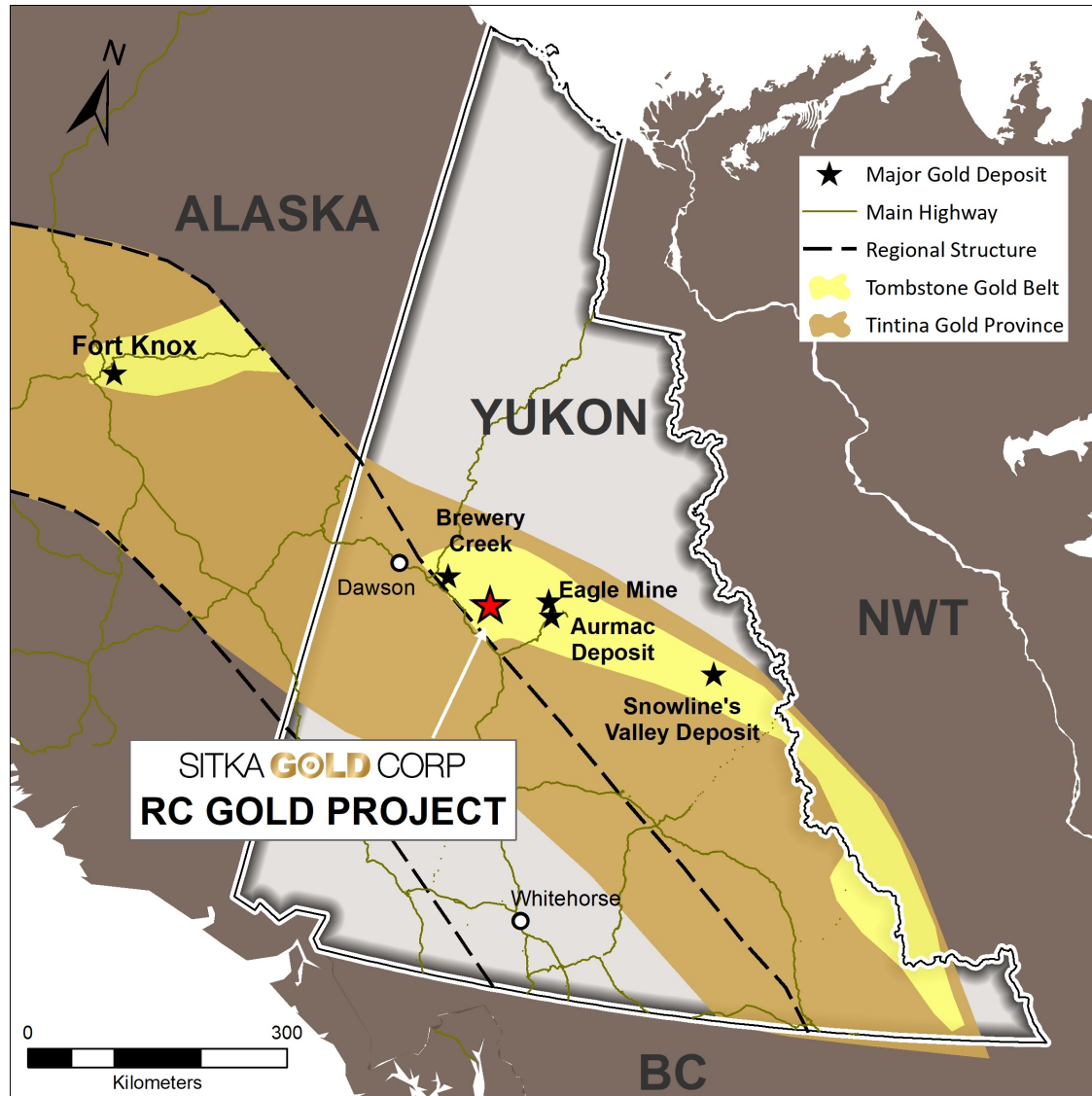


## SHARE STRUCTURE

as at March 10th, 2026

Shares Outstanding	419,682,009
Warrants (avg. wt. \$0.36)	21,200,000
Options	21,850,000
Fully Diluted	462,732,009
Market Cap at \$1.01/share	~\$424 million

# ➤ RC GOLD PROJECT LOCATION - ROAD



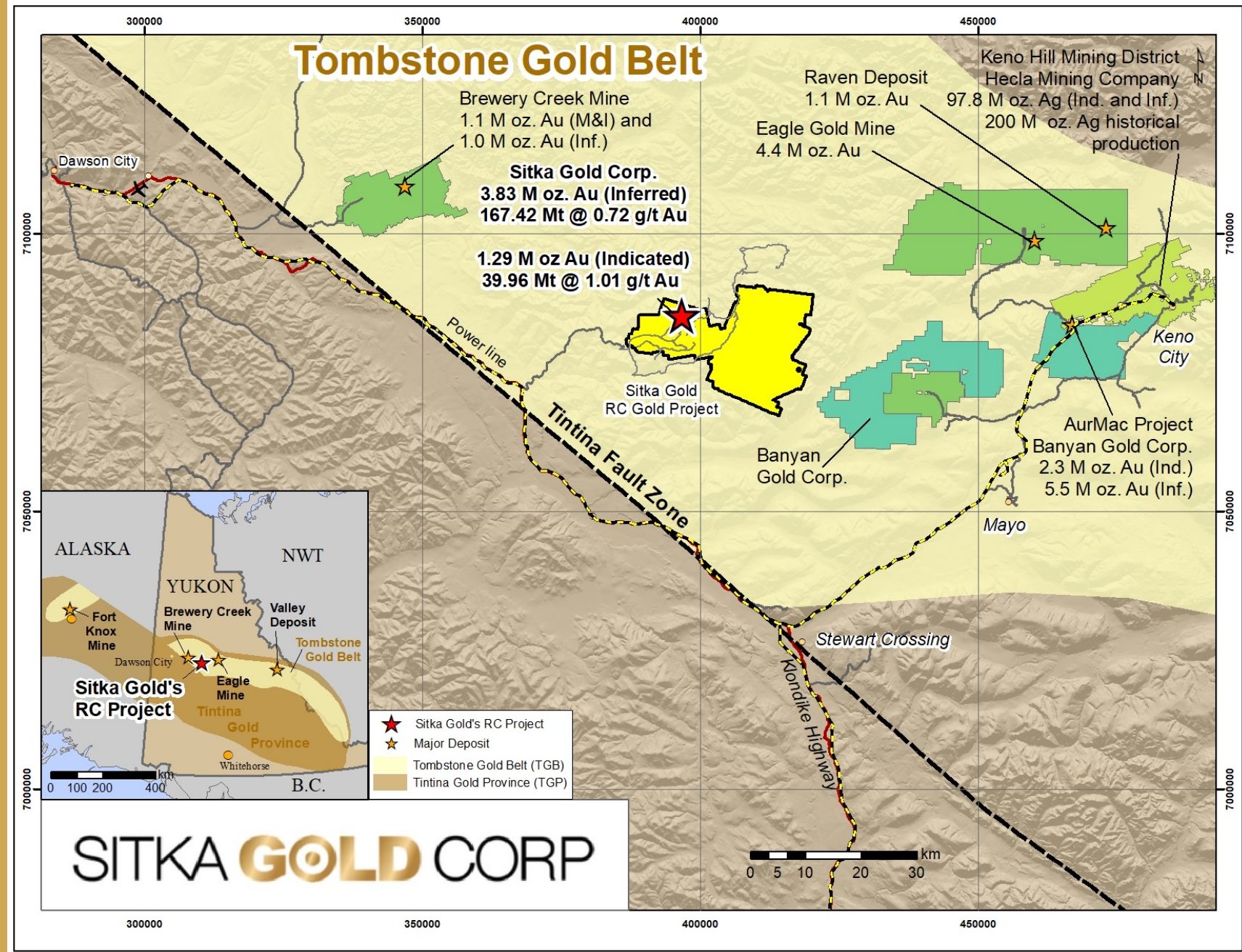
**100 km south-east of Dawson City, Yukon, with road access via Clear Creek Road (Km 32) from the Klondike Highway and proximity to 5,000-foot paved runway at Dawson City Airport**

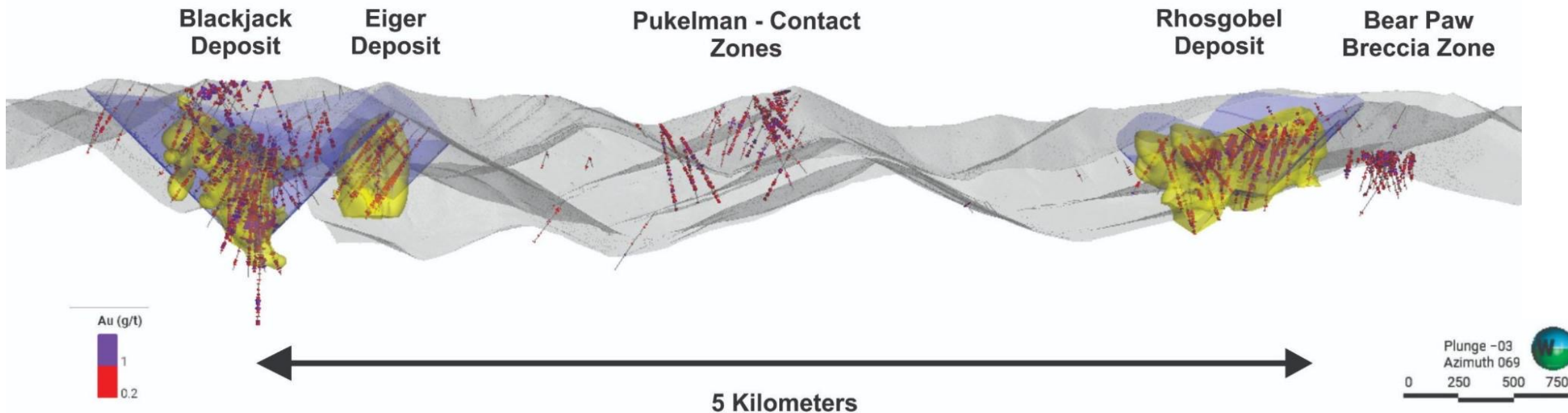
**The Tombstone Gold Belt is a prolific region within the Tintina Gold Belt, alongside major projects including the Eagle Gold Mine, Brewery Creek, Banyan Gold's AurMac, and Snowline Gold's Valley deposit**

**431 km<sup>2</sup> land package in a mining-friendly jurisdiction with proven discovery and development success**

# RC GOLD PROJECT DAWSON - MAYO REGION OF THE TOMBSTONE GOLD BELT

Gold Endowment  
in this road-  
accessible area  
has increased by  
14 million ounces  
since May 2020





Zone	Class	Cut-off Grade (g/t Au)	Tonnes (000's)	Gold Grade (Au g/t)	Oz Au (000's)
<b>Blackjack *</b>	Indicated	0.3	39,962	1.01	<b>1,291</b>
<b>Blackjack *</b>	Inferred	0.3	34,603	0.94	1,044
<b>Rhosgobel**</b>	Inferred	0.3	100,677	0.7	2,250
<b>Eiger**</b>	Inferred	0.3	32,143	0.52	535
<b>Total Inferred</b>	Inferred	0.3	167,423	0.72	<b>3,829</b>

- Total resource is based on three zones: **Blackjack, Eiger and Rhosgobel**
- Resource updated February 25, 2026
- As of the resource update, **165 diamond drill holes** have been drilled into this system by the Company for a total of approximately **59,800 metres**
- *32,000 metre diamond drill program completed 2025*
- **60,000 metre diamond drill program currently underway**

\*Simpson R., Clear Creek Property, RC Gold Project NI 43-101 Technical Report, Dawson Mining District, YT. January 21, 2025

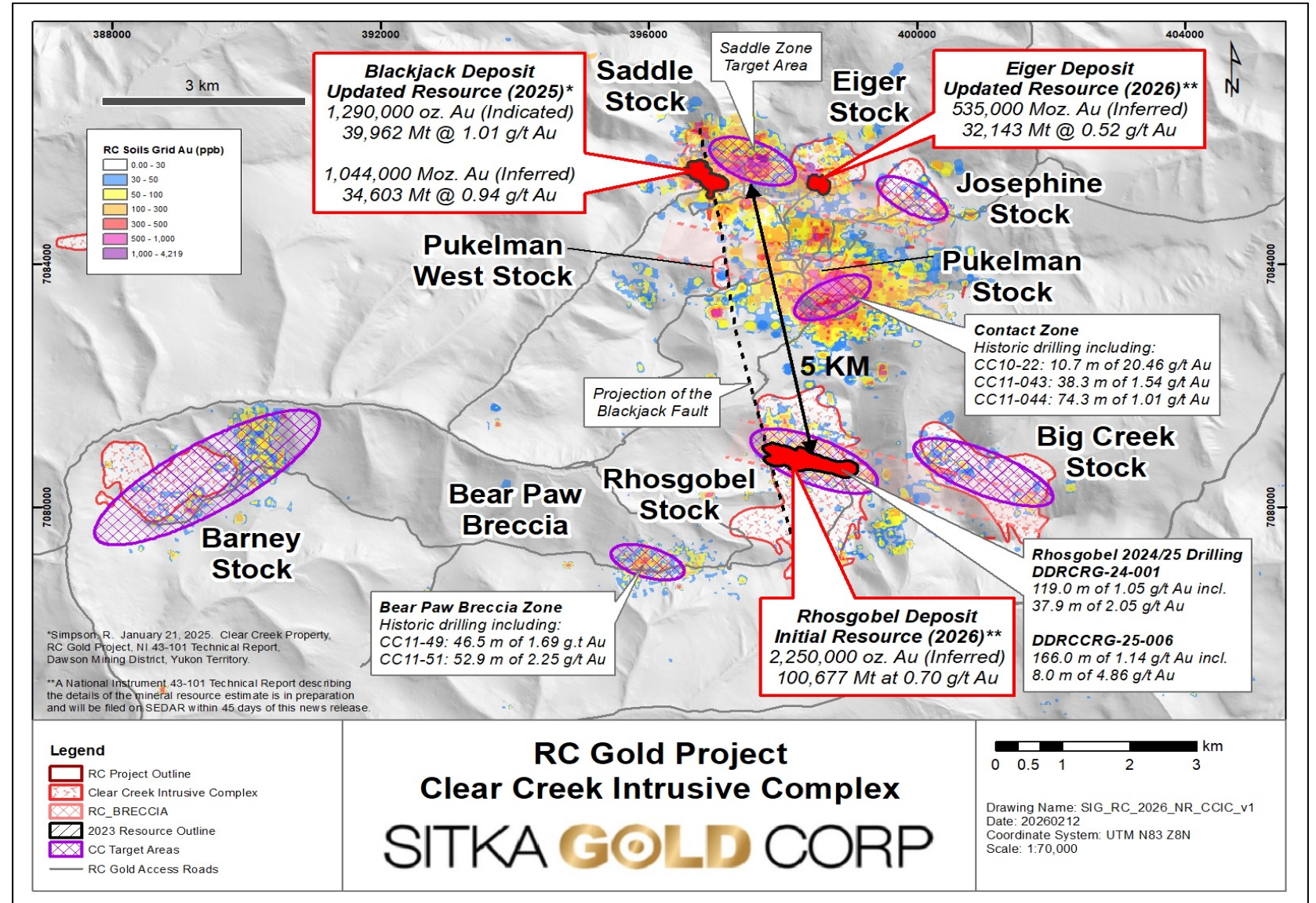
\*\* See Company News Release dated February 25, 2026

# RC GOLD PROJECT

## 3 Gold Deposits and Growing

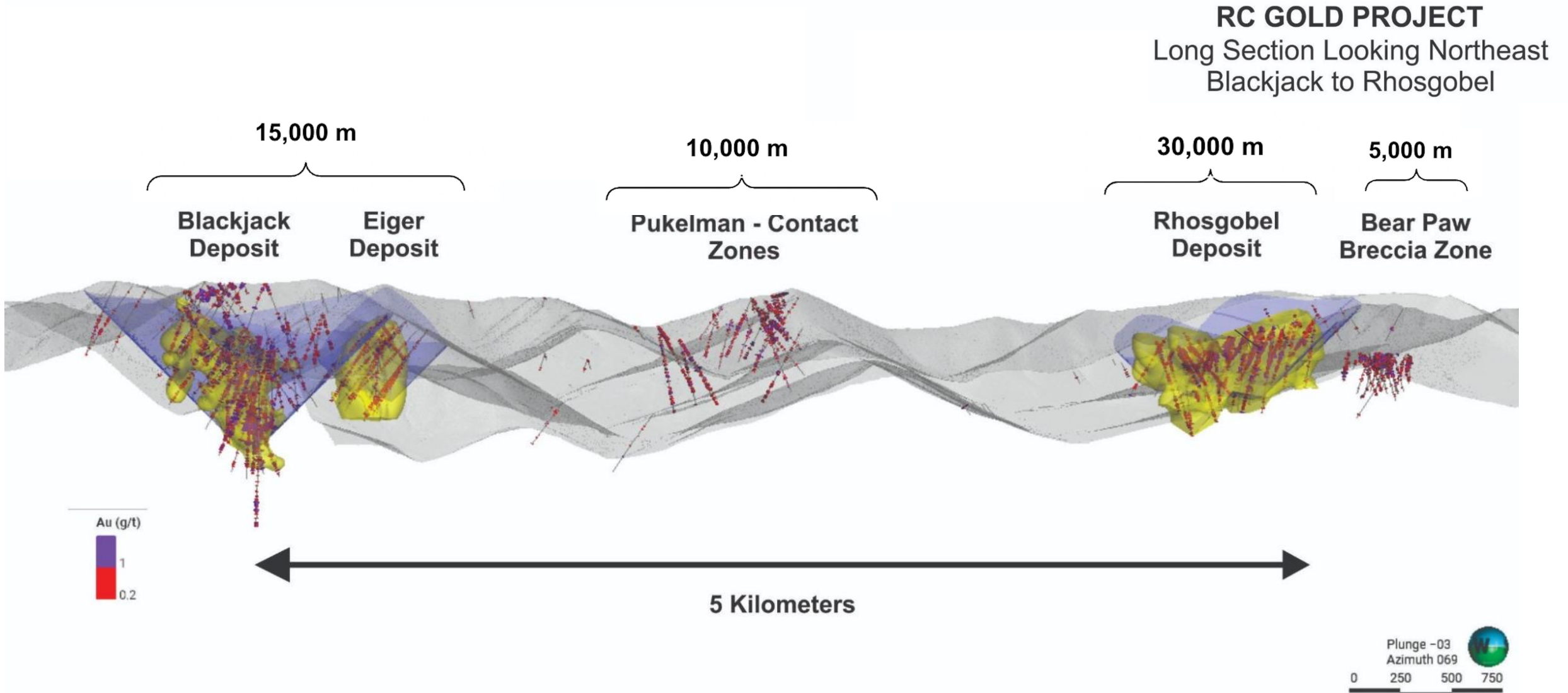
### Drill ready targets

- Resource expansion at Blackjack, Eiger and Rhosgobel deposits, Saddle zone drilling to upgrade into resource
- Drilling at Contact and Bear Paw for potential maiden resources
- Additional Drill ready targets at Josephine, Contact, Big Creek and Barney
- Two additional Drill targets outside the CCIC at the May-Qu and Mahtin intrusions



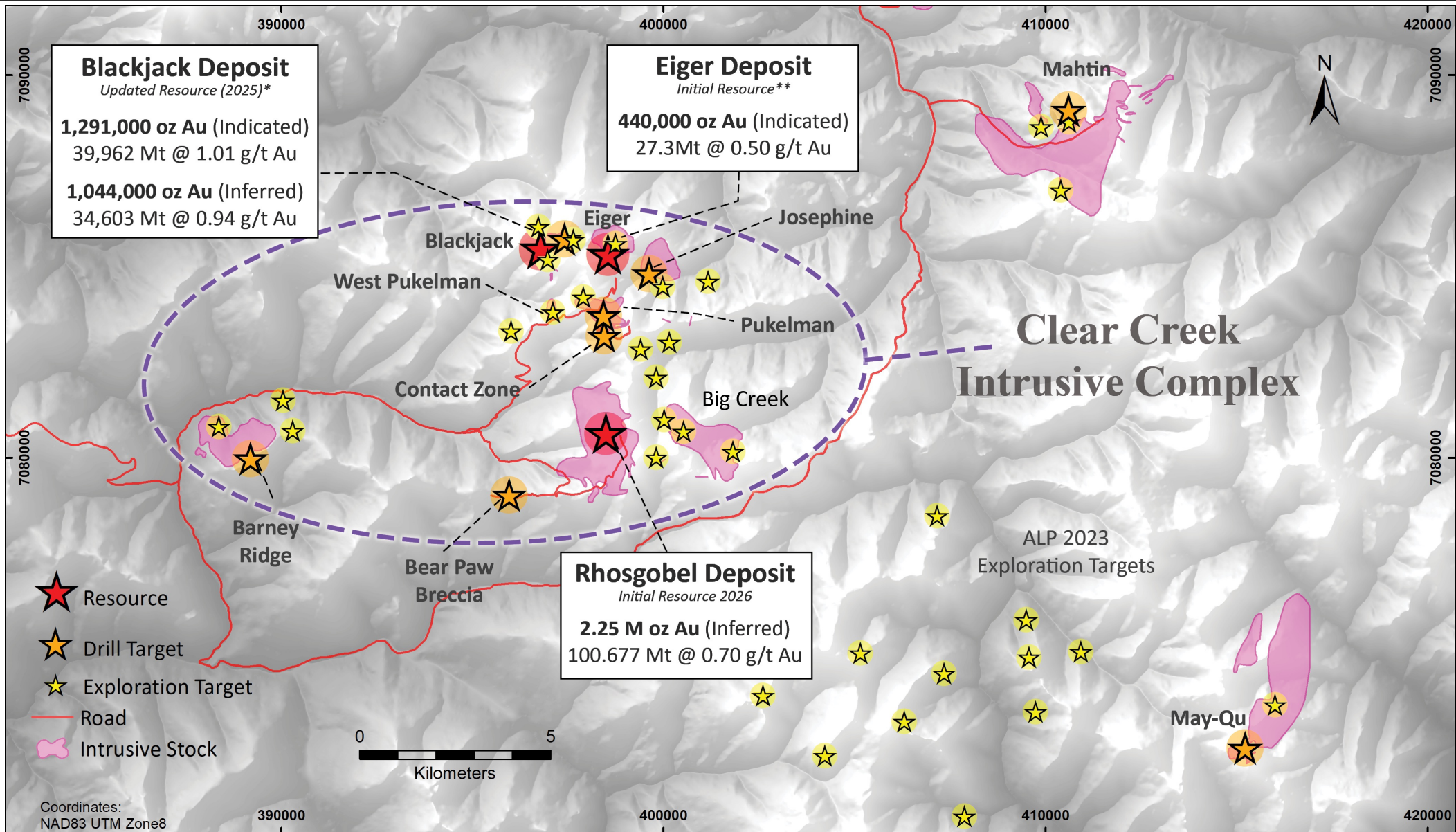
# RC GOLD PROJECT

## 60,000 Metre Diamond Drill Program – Allocation of 2026 Drilling



# RC GOLD PROJECT

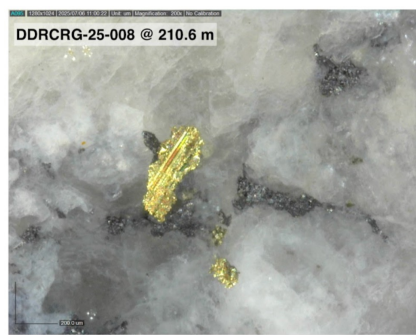
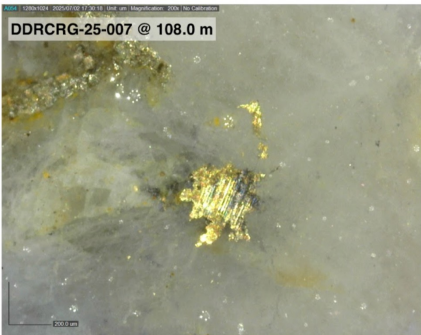
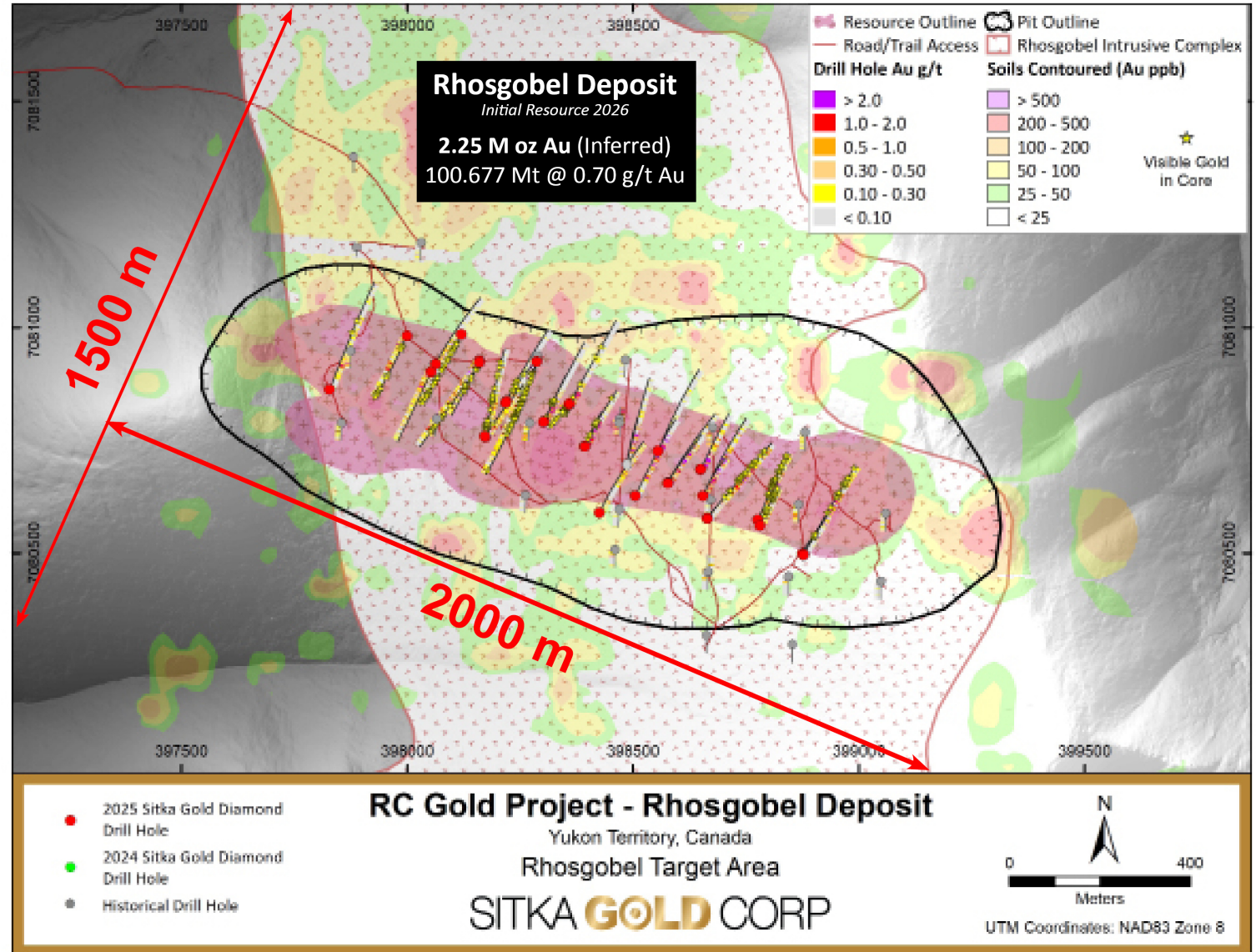
## Clear Creek Intrusive Complex



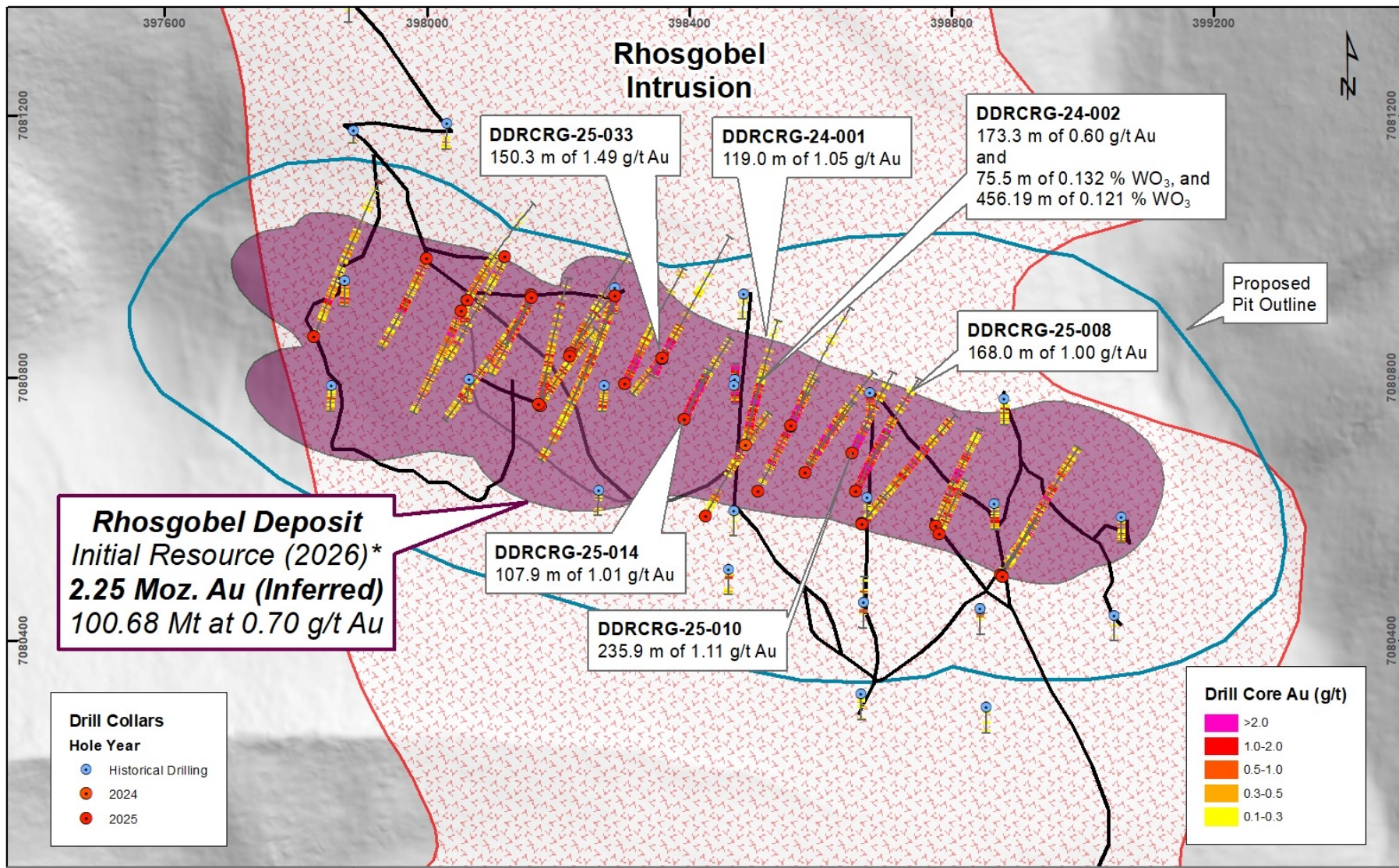
# ➤ RHOSGOBEL DEPOSIT

## MAIDEN RESOURCE BASED ON 15,396 METRES OF DRILLING TOTALING 72 HOLES

- **MAIDEN RESOURCE:** 2.25 M oz @ 0.70 g/t Au  
Announced Feb. 2026 (0.3 cut-off)
- 30,000 Metres of drilling planned at Rhosgobel in 2026
- **2025:** Discovery hole 24-01 intersected 119.0 m of 1.05 g/t gold including 37.9 m of 2.05 g/t gold
- Hole 25-02 intersected 173.3m of 0.60 g/t Au and 0.095% WO3 including 12.4m of 2.43 g/t Au and 0.21% WO3
- Hole 25-10 intersected 235.9 m of 1.11 g/t gold including 40.0 m of 2.01 g/t gold from surface
- Visible gold in 39 of the 43 holes drilled to date
- 1.1 kilometre strike length

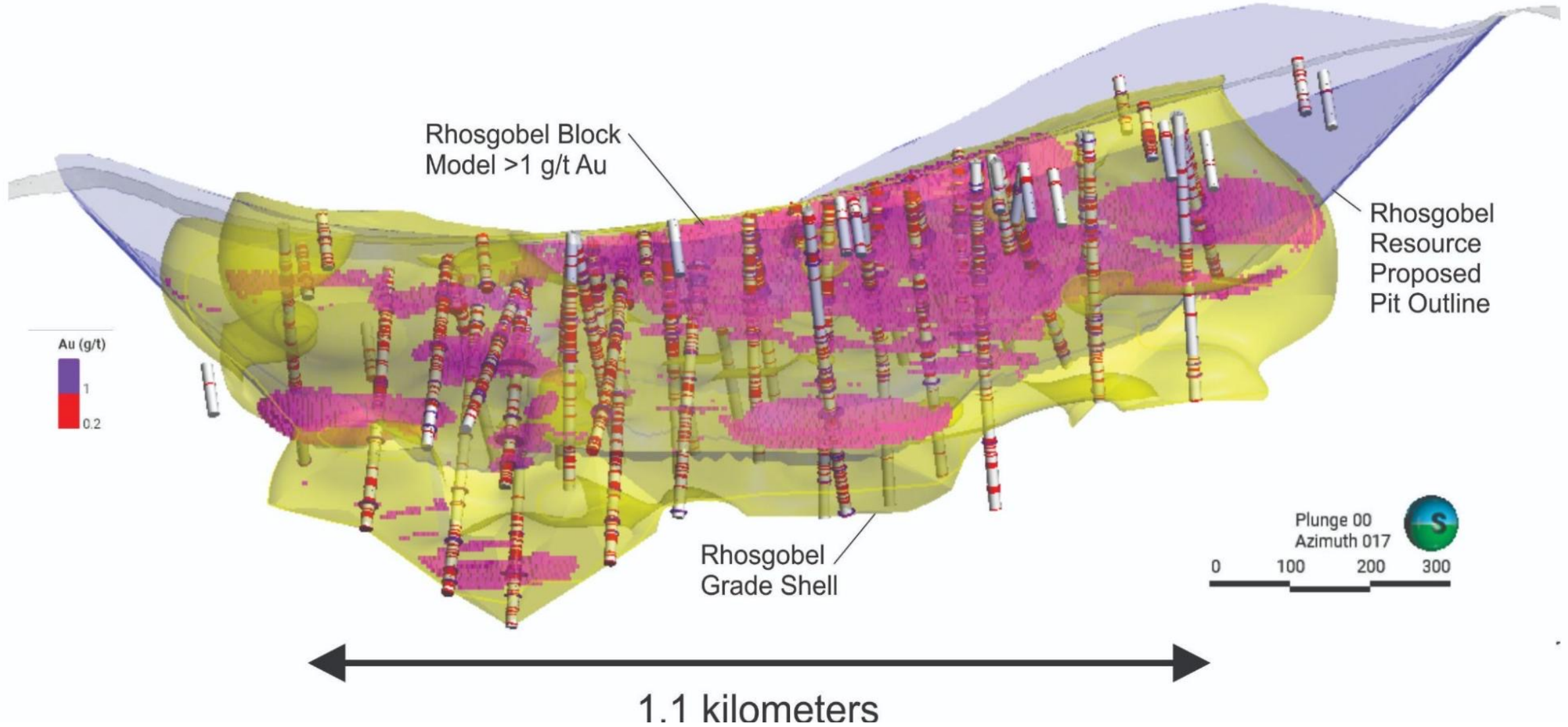


**INITIAL MINERAL RESOURCE ESTIMATE OUTLINE WITH CONCEPTUAL PIT-SHELL AND EXAMPLES OF HIGHLIGHTED DRILL HOLE INTERCEPTS.**

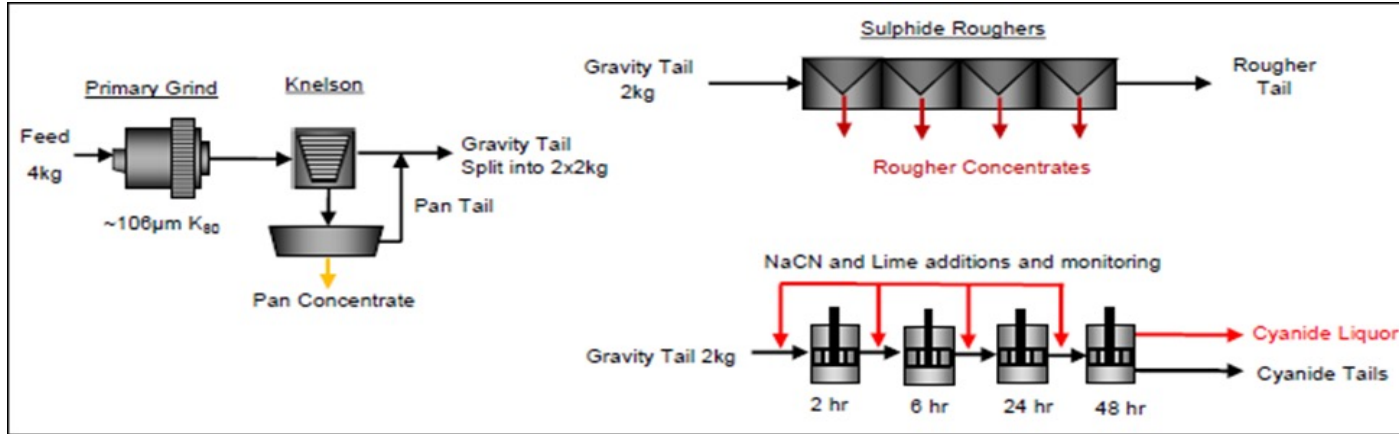


# ➤ RHOSGOBEL DEPOSIT

## Cross Section Looking North Showing >1 g/t Au Block Model



# ➤ METALLURGY – WHAT HAS BEEN DONE



**2022**

Cyanidation Bottle Roll Testing  
Blackjack and Eiger Deposits  
**up to 94.1% Recovery**

Confirmed **non-refractory** characteristics

**2025 – Blackjack**

Conventional Cyanidation Leach

Gravity Recovery + Gravity Tails Leach

Gravity Recovery + Gravity Tails Flotation

**up to 93.0% Recovery**

**2026**

Initial bottle roll tests of two samples at Rhosgobel give 89 and 96 % recovery of Au. Further metallurgical test work to advance and compare cyanidation leach, gravity and tails leach, gravity and gravity tails flotation and Tungsten recovery

**Table 3: Analytical Results for Tungsten (WO<sub>3</sub>) mineralization at Rhosgobel (DDRCRG-24-002)**

Hole ID	Zone	Length (m)	Azimuth (°)	Dip (°)	From (m)	To (m)*	Length (m)	Gold (g/t)	WO <sub>3</sub> (Wt %)
<b>Intervals from Company Press Release Dated November 25, 2024 with Tungsten Results</b>									
DDRCRG-24-002	Rhosgobel	400.8	10	-75	97	270.3	173.3	0.6	0.095
Including					105	133.4	28.4	1.37	0.116
Including					121	133.4	12.4	2.43	0.208
Including					167.1	184.5	17.4	1.1	0.139
Including					269.2	270.3	1.1	8.99	0.002
<b>Select Intervals of higher WO<sub>3</sub>** mineralization from DDRCRG-25-002</b>									
					119.5	195	75.5	0.84	0.132
and					223	269.19	46.19	0.38	0.121
including					186.66	193.64	6.98	0.55	0.388
including					249.05	249.66	0.61	3.55	4.739

\*Intervals are drilled core length, as insufficient drilling has been completed at this time to determine true widths.

\*\*Larger intervals were calculated using a 0.1 % WO<sub>3</sub> Cutoff grade and 20 m waste limit, and narrow intersections were calculated using a 0.5 % WO<sub>3</sub> Cut off grade and a 20 m waste limit. Two different tungsten standards, blanks, and duplicates were submitted in regular intervals in the sampling process and all QA/QC procedures were followed.



**Hole 2 -Scheelite (Tungsten)**

# ➤ RC GOLD PROJECT – Blackjack-Saddle-Eiger

## 2025 BLACKJACK EXPANSION

- 15 drill holes totaling 7,576 m
- Visible gold observed in all holes

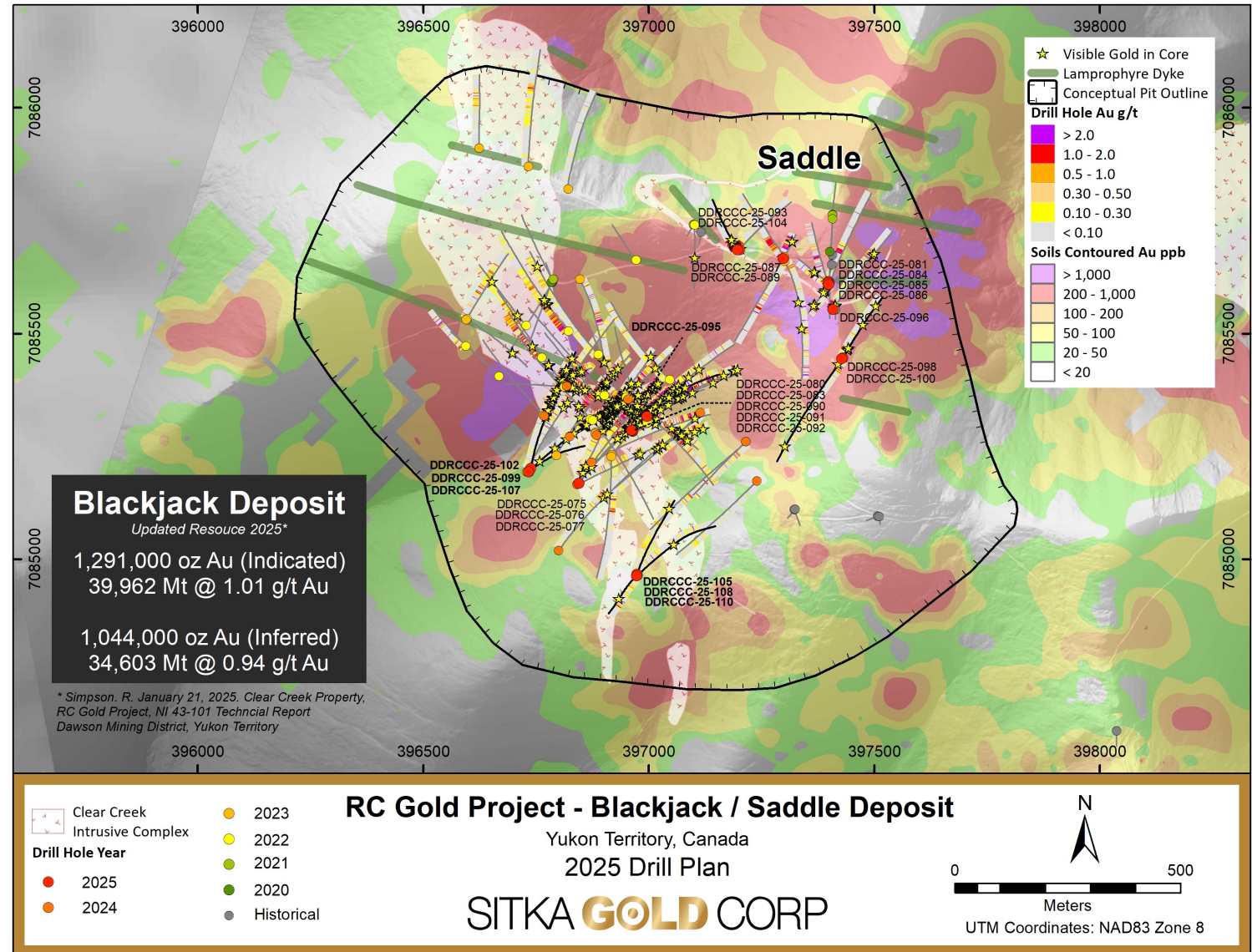
## EIGER EXPANSION

- 10 drill holes, totaling 4,461 m
- First drilling since 2021
- Visible gold observed in both intrusive and metasedimentary rocks

## SADDLE ZONE

- 11 drill holes totaling 2,918 m
- Within pit limits of Blackjack deposit
- Visible gold observed in both intrusive and metasedimentary rocks
- **47.6 m of 2.09 g/t Au including 8.0 m of 5.07 g/t Au in Hole 87**

**15,000 METERS PLANNED IN 2026**

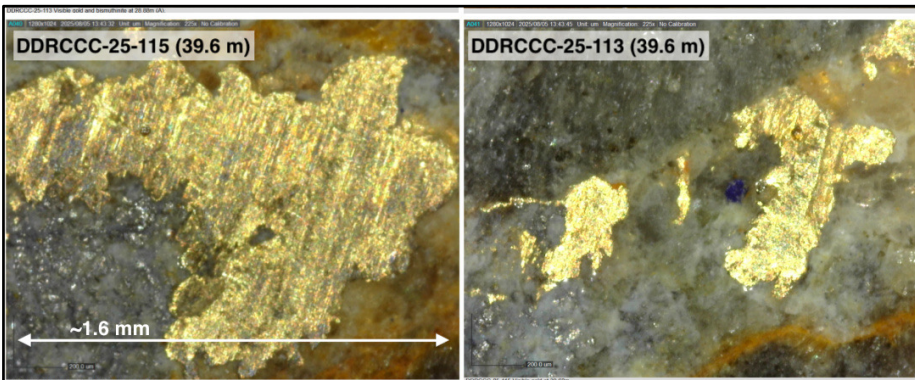
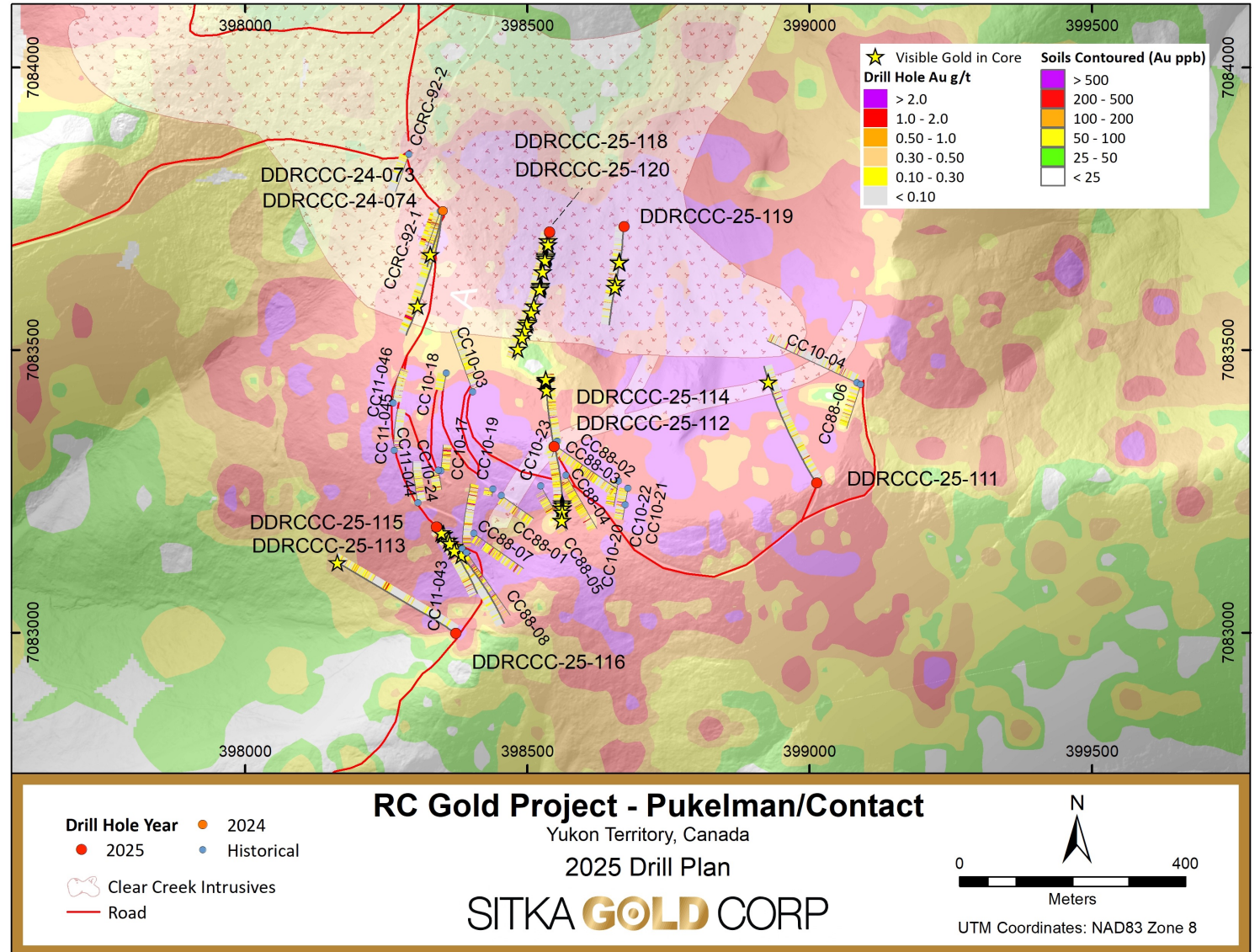


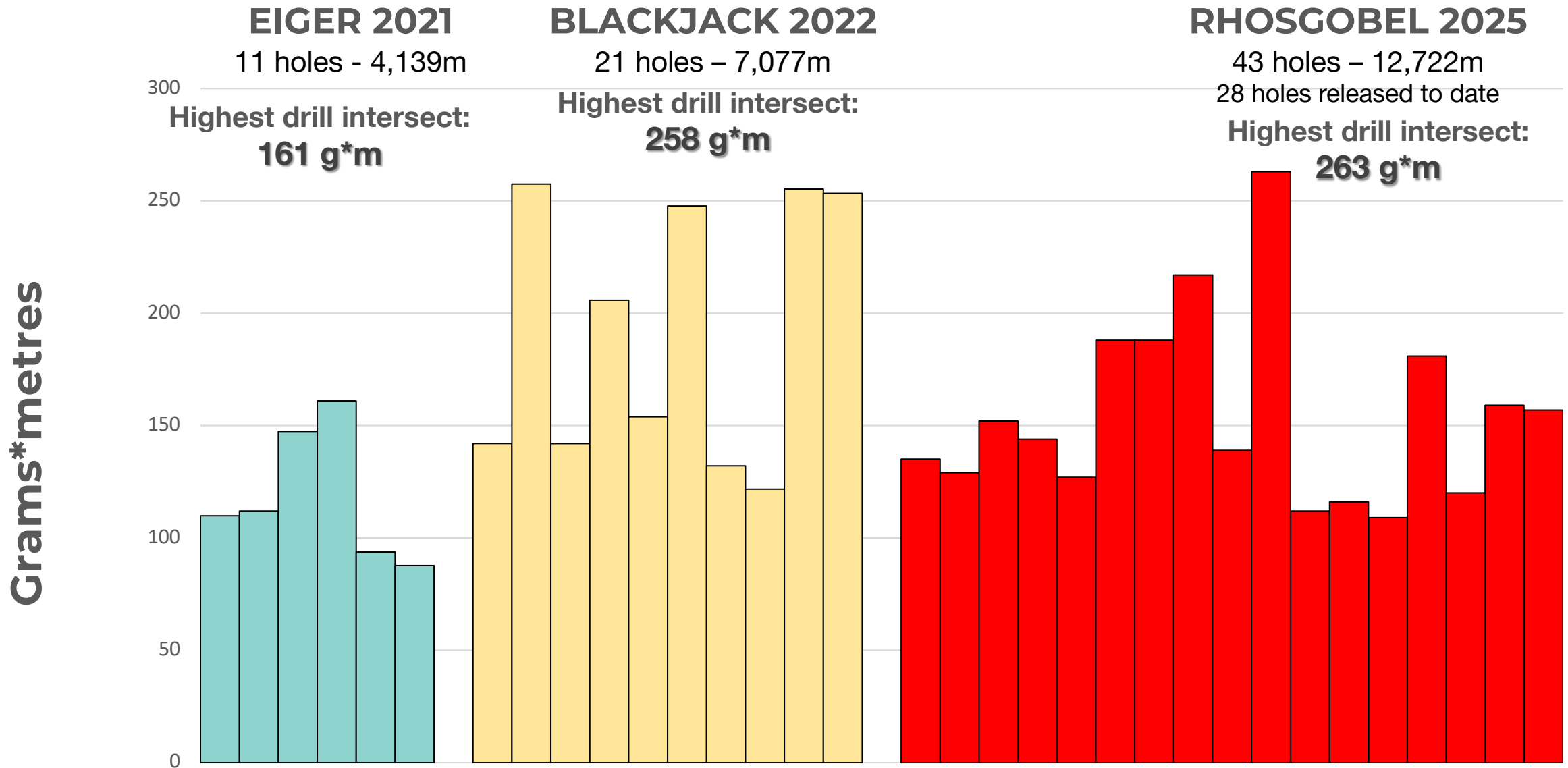
# ➤ 2025 DRILLING – CONTACT-PUKELMAN ZONE – 5,000 Metres

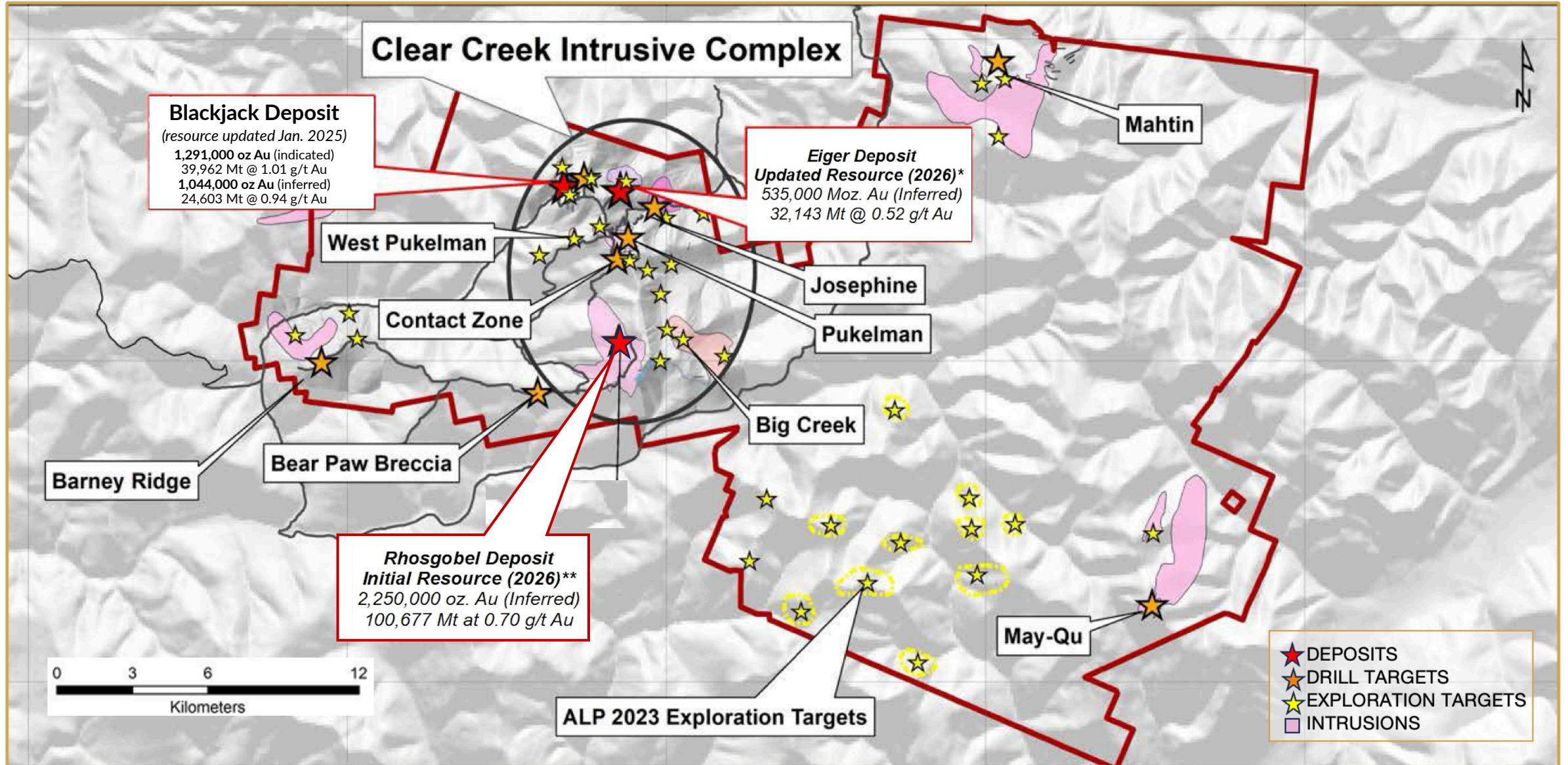
## DRILLING ON NEW DISCOVERIES

### 2025 DIAMOND DRILLING PUKELMAN-CONTACT DISCOVERY

- Sitka's 2024 drill hole DDRCCC-24-074 in the intrusion intersected 343.0 m of 0.34 g/t Au, yielding 117 g-m gold
- Sitka tested both intrusion and sediment hosted mineralization with diamond drilling in 2025
- 2025 drilling Hole 113 intersects **119.0 m of 1.01 g/t gold from surface**
- Drilling intersected gold mineralization over a 900 m by 650 m area and to a depth of 430 m







	2025	2026	2027		2028	2029	2030	2031 →
<b>Deposit(s) definition Exploration</b>	Rhosgobel Discovery	Ongoing						
<b>Environmental Studies</b>	Baseline	Expanded Baseline	Expanded Baseline		Expanded Baseline	Expanded Baseline	Expanded Baseline	
<b>Engineering</b>			*PEA	*PFS	*PFS	*PFS/FS	*FS	*FS
<b>Assessment, Permitting and Licensing</b>					**YESAB	**YESAB	**YESAB	Water and Quartz Mining Licenses
<b>Indigenous Participation</b>	First Nations Participation and Engagement							

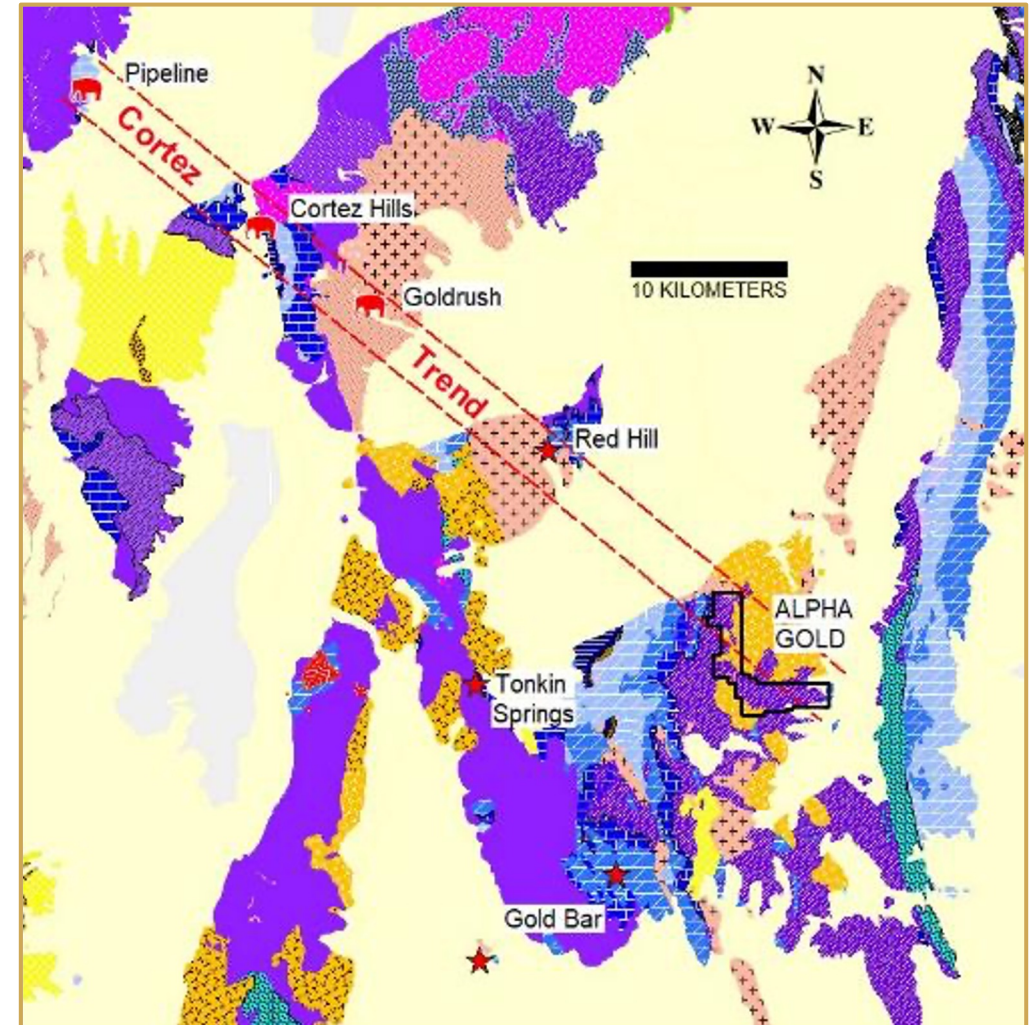
\*Preliminary Economic Assessment, Pre-Feasibility Study, Feasibility Study

\*\* Yukon Environmental and Socio-Economic Assessment Board



## ➤ LOCATION

- In the Carlin Gold Province with approx. 200 million ounces of gold discovered to date & 30 producing gold mines
- 40 Km southeast of the Barrick/Newmont Cortez Mine Complex
- An ideal erosional level preserves prime Late Devonian carbonates at the crest of a structural dome, at mineable depths



## A newly discovered large wide-open Carlin-type gold system with notable gold intercepts, from wide-spaced drilling

- 2020 to 2023 - Five drill programs totaling 5,144 metres in 15-holes have advanced the project from a geological model to a new discovery
- Road accessible property located in the Cortez Gold Trend, 40 km south-east of the Barrick/Newmont Cortez Mine
- Carlin style mineralization and alteration intersected in drilling, highlights include:

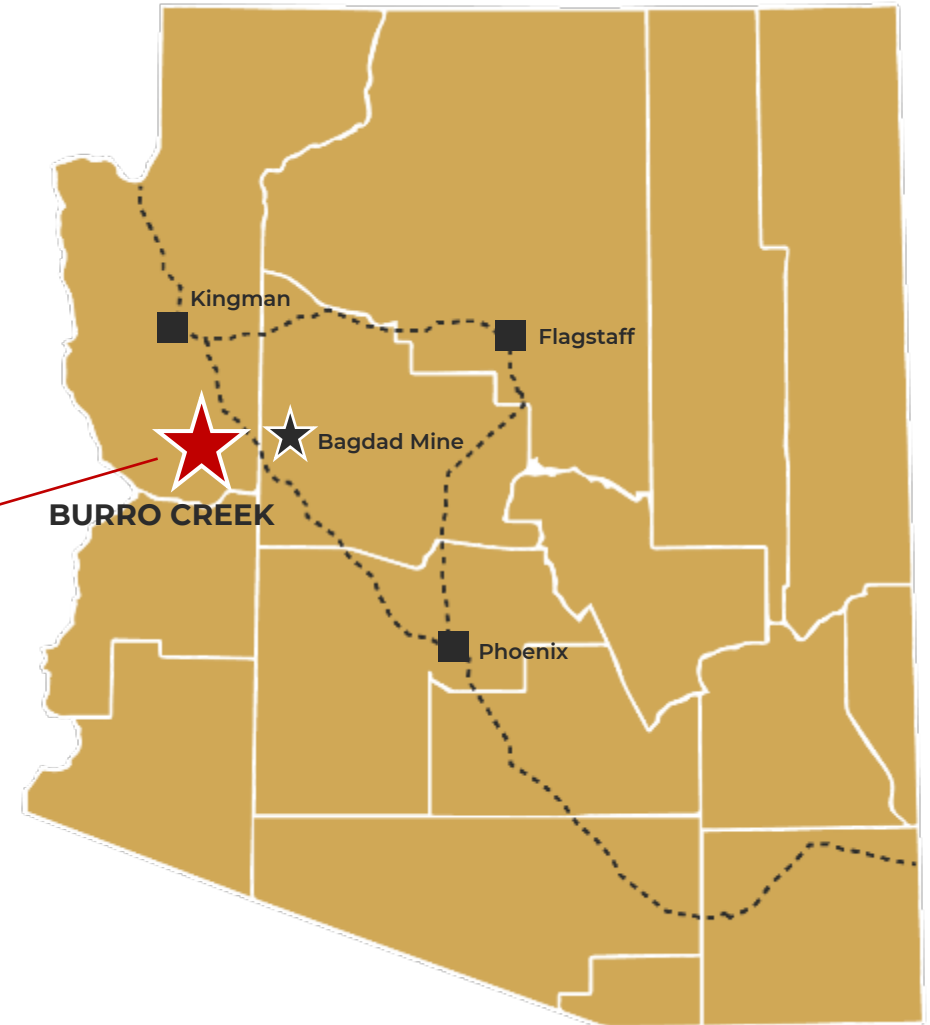
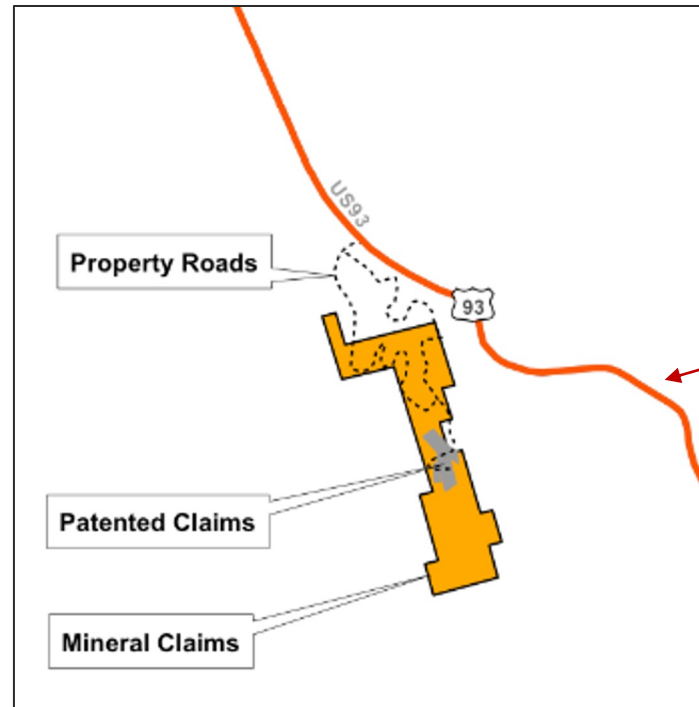
Hole #	From (metres)	Length (metres)	Gold (g/t)
AG21-05	118.8	12.2	0.41
AG21-07	62.5	103.6	0.12
including	196.6	3.05	0.41
AG21-08	333.8	15.24	0.46
including	344.4	3.05	1.10
AG22-09	125.0	10.7	0.51
AG22-10	211.8	<b>21.3</b>	<b>1.21</b>
Including	225.6	<b>1.5</b>	<b>4.62</b>



# ➤ BURRO CREEK (ARIZONA) Historical Silver Resource 5 Million Ounces

## ➤ LOCATION

- Located in Mohave County, Arizona approx. 200 km northwest of Phoenix, Arizona
- A very stable jurisdiction with a long history of mining success
- Road accessible; just 1 mile off Hwy 93



## HISTORICAL RESOURCE OF:

- 5 million ounces silver
- 120,000 ounces gold

- A massive, at surface, low sulphidation, epithermal Au-Ag vein system with a projected strike length of ~1.5 km
- Only 10% of interpreted vein system drilled
- Potential to significantly expand deposit
- Previously permitted for production
- In a proven mining jurisdiction with road access and nearby mining infrastructure
- **Phase 1 drilling completed Q2 2020**
- **Permitted for phase 2 drilling**



## MANAGEMENT & BOARD OF DIRECTORS

### **Corwin (Cor) Coe, B.Sc., P.Geo. – Director & CEO**

35+ years experience in the mining sector primarily in Arizona, Nevada and Yukon; has put 2 mines into production & is credited with discovery of a 2.0 M oz gold deposit; Professional Geologist and Mining Engineering Technologist with a B.Sc. in Earth Sciences from SFU; diploma in Mining Engineering Technology from BCIT.

**Donald Penner, B.Sc. – Director & President** President of DF Penner Geological Consulting Ltd., worked on grassroots to feasibility projects in North and South America, Africa and Europe since 1969; B.Sc. In Geological Sciences from University of British Columbia.

**Mike Burke, B.Sc., P.Geo. – Director & VP of Corporate Development** 35+ years experience in the mining sector primarily in the Yukon. Professional Geologist with a B.Sc. in Geology from UBC. Experience includes underground and open pit mine geologist, 20+ years with the Yukon Geological Survey as Head of Mineral Services, Chief Geologist for Golden Predator, Senior Operations Manager for Ensero Solutions.

**Scott Price, B.Sc., M.Sc. – Operations Manager (USA)** 25 years of experience with a focus on gold exploration in Nevada; worked on several discoveries throughout Nevada and on the Pebble deposit in Alaska; B.Sc. in geology from University of Wyoming; M.Sc. in geology from Washington State University.

**Stephen Pearce, LL.B. – Director & CFO** Director and Officer of several resource-related companies; specializes in corporate finance and securities; Law degree from UBC; Honours degree in economics from York University.

**Gilles Dessureau, P.Geo. – VP Exploration** Professional Geologist with 20+ years in the mining sector. 10+ years spent in the Yukon including Fireweed's Mac Pass and Golden Predator's Brewery Creek. Mr. Dessureau holds a Masters in Geology from Laurentian University.

## INDEPENDENT DIRECTORS

**J. Greg Dawson, M.Sc., P.Geo. – Independent Director** Past Director of Exploration for GroundTruth Exploration; 30+ years of experience as an officer, director or manager of several junior mining companies; M.Sc. from Queens University.

**Louis Archambeault, M.Eng - Independent Director** Senior mining executive with 20 + years spanning corporate development, strategy, capital markets, M&A and technical project development. Past experience includes 6+ years at CIBC World Markets, Director of Corporate Development at Goldcorp and VP of Strategy and Corporate Development at Orezone Gold Corp.

### **Angus Campbell, B.Sc. - Independent Director**

30 years of global project experience including working on greenfield, brownfield and mine development projects. Most recently, VP Ex for Sabina Gold and Silver Corp acquired by B2Gold Corp. in 2023 for \$1.2 billion. 10 years with Sabina, Angus led exploration initiatives that resulted in new deposit discovery and over 2.5 million ounces of resource growth. Prior to Sabina, he was Exploration Manager for Chile with BHP Billiton based in Santiago.

### **Peter Maclean - Independent Director**

Experienced Director and Officer of several public companies; played a significant role in raising more than \$100MM in equity financings; Economist with a BA from Acadia U. and an MA from UNB.

## ADVISORY BOARD

### **Dr. Craig Hart, PhD, FSEG, FGAC – Independent Chair, Snowline Gold**

An internationally recognized geoscientist who played a pivotal role in the development of intrusion-related gold systems, such as those that form gold at Sitka's RC Gold Project. A founding geologist of the Yukon Geological Survey and former head of its Mineral Services Division. Dr. Hart holds a PhD from the University of Western Australia and has contributed to the publication of >150 scientific papers.

### **Tim Termuende, B.Sc, P.Geo**

Tim, President, executive chairman and Co-founder of Eagle Plains Resources, is a professional geologist with over 40 years' experience in the mineral exploration industry. Since leaving Cominco in the late 1980's, Tim has worked on exploration projects throughout North and South America and currently oversees a broad range of projects targeting various commodities throughout British Columbia, Saskatchewan, Yukon and Northwest Territories.

### **Joseph (Joe) Piekenbrock, M.Sc.**

35+ years of mining experience; past VP Exploration for NovaGold Resources Inc.; awarded Thayer Lindsley medal for discovery of Donlin Creek deposit; B.Sc. in Geology from the University of Colorado; M.Sc. in Geology from the University of Arizona.

### **Syd Visser, B.Sc., P.Geo.**

President/Senior Geophysicist at SJ Geophysics Ltd.; 30+ years of international geophysical survey experience; Haileybury School of Mines graduate; B.Sc. in Geology & Geophysics from University of British Columbia.

### **Scott Close, M.Sc., P.Geo.**

President Ethos Geological, Inc.; Senior Technical Advisor and Exploration Manager roles throughout North America; M.Sc. in Earth Sciences from SFU; specializes in resource evaluation and development.

### **Sam Wallingham**

Extensive experience and knowledge in community affairs, First Nations governance, First Nations training, and negotiations. Has worked with several mining companies over the past 25 years in a variety of capacities, including as a community affairs manager, negotiator, and personal manager. Has served on many boards as a First Nations representative and appointee and Yukon government appointee. Currently sits on the Yukon Water Board.

### **Brad Thrall, B.Sc., MBA**

Metallurgical Engineer with 35+ years of experience including corporate executive roles and mine development operations positions. Recently co-founder and President of Alexco Resource Corp. until it was acquired by Hecla Mining in September 2022. Mr. Thrall is currently a Director of Rockhaven Resources, Technical Advisor to Banyan Gold and Board Member of the Yukon Minerals Advisory Board. Mr. Thrall holds a B.Sc. in Metallurgical Engineering from South Dakota School of Mines and Technology and an MBA from the University of Colorado.

# SITKA GOLD CORP

**Jenn Coe**, VP Corporate Communications

**Phone:** 778-879-7914

**Email:** [jenn@sitkagoldcorp.com](mailto:jenn@sitkagoldcorp.com)

Connect with us!



1500-409 Granville Street  
Vancouver, BC  
V6C 1T2  
[www.sitkagoldcorp.com](http://www.sitkagoldcorp.com)